

CXCR5 Antibody (C-Terminus)
Rabbit Polyclonal Antibody
Catalog # ALS10346**Specification**

CXCR5 Antibody (C-Terminus) - Product Information

Application	IHC-P
Primary Accession	P32302
Reactivity	Human
Host	Rabbit
Clonality	Polyclonal
Calculated MW	42kDa KDa
Dilution	IHC-P~~N/A

CXCR5 Antibody (C-Terminus) - Additional Information**Gene ID** 643**Other Names**

C-X-C chemokine receptor type 5, CXC-R5, CXCR-5, Burkitt lymphoma receptor 1, Monocyte-derived receptor 15, MDR-15, CD185, CXCR5, BLR1, MDR15

Target/Specificity

Human CXCR5. BLAST analysis of the peptide immunogen showed no homology with other human proteins, except NAAA (67%).

Reconstitution & Storage

Long term: -70°C; Short term: +4°C

Precautions

CXCR5 Antibody (C-Terminus) is for research use only and not for use in diagnostic or therapeutic procedures.

CXCR5 Antibody (C-Terminus) - Protein Information**Name** CXCR5**Synonyms** BLR1, MDR15**Function**

Cytokine receptor that binds to B-lymphocyte chemoattractant (BLC). Involved in B-cell migration into B-cell follicles of spleen and Peyer patches but not into those of mesenteric or peripheral lymph nodes. May have a regulatory function in Burkitt lymphoma (BL) lymphomagenesis and/or B-cell differentiation.

Cellular Location

Cell membrane; Multi-pass membrane protein.

Tissue Location

Expression in mature B-cells and Burkitt lymphoma cells

Volume

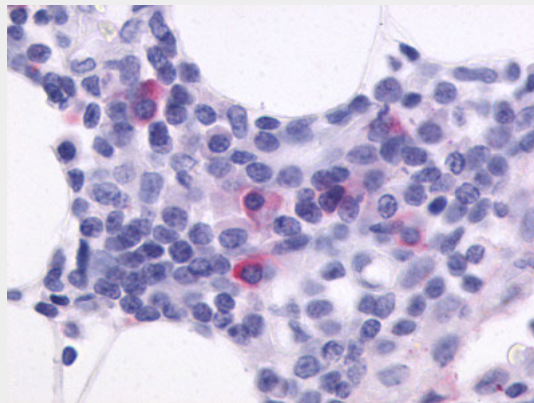
50 μ l

CXCR5 Antibody (C-Terminus) - Protocols

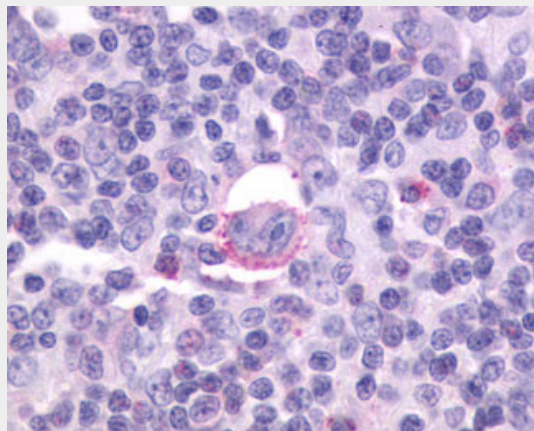
Provided below are standard protocols that you may find useful for product applications.

- [Western Blot](#)
- [Blocking Peptides](#)
- [Dot Blot](#)
- [Immunohistochemistry](#)
- [Immunofluorescence](#)
- [Immunoprecipitation](#)
- [Flow Cytometry](#)
- [Cell Culture](#)

CXCR5 Antibody (C-Terminus) - Images



Anti-CXCR5 antibody ALS10346 IHC of human spleen.



Anti-CXCR5 antibody IHC of human Lymph Node, Hodgkins Lymphoma.

CXCR5 Antibody (C-Terminus) - Background

Cytokine receptor that binds to B-lymphocyte chemoattractant (BLC). Involved in B-cell migration

into B-cell follicles of spleen and Peyer patches but not into those of mesenteric or peripheral lymph nodes. May have a regulatory function in Burkitt lymphoma (BL) lymphomagenesis and/or B-cell differentiation.

CXCR5 Antibody (C-Terminus) - References

- Dobner T., et al. Eur. J. Immunol. 22:2795-2799(1992).
Barella L., et al. Biochem. J. 309:773-779(1995).
Legler D.F., et al. J. Exp. Med. 187:655-660(1998).
Sjoeblom T., et al. Science 314:268-274(2006).