

TSH Receptor / TSHR Antibody (C-Terminus)
Rabbit Polyclonal Antibody
Catalog # ALS10368**Specification**

TSH Receptor / TSHR Antibody (C-Terminus) - Product Information

Application	IHC-P
Primary Accession	P16473
Reactivity	Human
Host	Rabbit
Clonality	Polyclonal
Calculated MW	87kDa KDa
Dilution	IHC-P~~N/A

TSH Receptor / TSHR Antibody (C-Terminus) - Additional Information**Gene ID** 7253**Other Names**

Thyrotropin receptor, Thyroid-stimulating hormone receptor, TSH-R, TSHR, LGR3

Target/Specificity

Human TSH Receptor. BLAST analysis of the peptide immunogen showed no homology with other human proteins, except LHCGR (42%).

Reconstitution & Storage

Long term: -70°C; Short term: +4°C

Precautions

TSH Receptor / TSHR Antibody (C-Terminus) is for research use only and not for use in diagnostic or therapeutic procedures.

TSH Receptor / TSHR Antibody (C-Terminus) - Protein Information**Name** TSHR**Synonyms** LGR3**Function**

Receptor for the thyroid-stimulating hormone (TSH) or thyrotropin (PubMed: [11847099](http://www.uniprot.org/citations/11847099)), PubMed: [12045258](http://www.uniprot.org/citations/12045258)). Also acts as a receptor for the heterodimeric glycoprotein hormone (GPHA2:GPHB5) or thyrostimulin (PubMed: [12045258](http://www.uniprot.org/citations/12045258)). The activity of this receptor is mediated by G proteins which activate adenylate cyclase (PubMed: [11847099](http://www.uniprot.org/citations/11847099)). Plays a central role in controlling thyroid cell metabolism (By similarity).

Cellular Location

Cell membrane; Multi-pass membrane protein. Basolateral cell membrane; Multi-pass membrane protein

Tissue Location

Expressed in thyroide cells (at protein level) (PubMed:11847099). Expressed in the thyroid (PubMed:2610690)

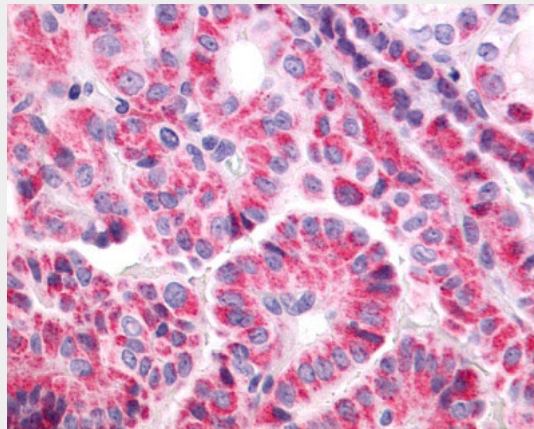
Volume

50 µl

TSH Receptor / TSHR Antibody (C-Terminus) - Protocols

Provided below are standard protocols that you may find useful for product applications.

- [Western Blot](#)
- [Blocking Peptides](#)
- [Dot Blot](#)
- [Immunohistochemistry](#)
- [Immunofluorescence](#)
- [Immunoprecipitation](#)
- [Flow Cytometry](#)
- [Cell Culture](#)

TSH Receptor / TSHR Antibody (C-Terminus) - Images

Anti-TSH Receptor / TSHR antibody IHC of human Thyroid, Papillary Carcinoma.

TSH Receptor / TSHR Antibody (C-Terminus) - Background

Receptor for thyrothopin. Plays a central role in controlling thyroid cell metabolism. The activity of this receptor is mediated by G proteins which activate adenylate cyclase. Also acts as a receptor for thyrostimulin (GPA2+GPB5).

TSH Receptor / TSHR Antibody (C-Terminus) - References

- Nagayama Y.,et al.Biochem. Biophys. Res. Commun. 165:1184-1190(1989).
Libert F.,et al.Biochem. Biophys. Res. Commun. 165:1250-1255(1989).
Misrahi M.,et al.Biochem. Biophys. Res. Commun. 166:394-403(1990).
Frazier A.L.,et al.Mol. Endocrinol. 4:1264-1276(1990).

Graves P.N., et al. Biochem. Biophys. Res. Commun. 187:1135-1143(1992).