

GPR75 Antibody (C-Terminus)
Rabbit Polyclonal Antibody
Catalog # ALS10406**Specification**

GPR75 Antibody (C-Terminus) - Product Information

Application	IHC-P
Primary Accession	O95800
Reactivity	Human, Rabbit, Hamster, Monkey, Pig, Horse, Bovine
Host	Rabbit
Clonality	Polyclonal
Calculated MW	59kDa KDa
Dilution	IHC-P~~N/A

GPR75 Antibody (C-Terminus) - Additional Information**Gene ID** 10936**Other Names**

Probable G-protein coupled receptor 75, GPR75

Target/Specificity

Human GPR75. BLAST analysis of the peptide immunogen showed no homology with other human proteins.

Reconstitution & Storage

Long term: -70°C; Short term: +4°C

Precautions

GPR75 Antibody (C-Terminus) is for research use only and not for use in diagnostic or therapeutic procedures.

GPR75 Antibody (C-Terminus) - Protein Information**Name** GPR75**Function**

G protein-coupled receptor that is activated by the chemokine CCL5/RANTES. Probably coupled to heterotrimeric Gq proteins, it stimulates inositol trisphosphate production and calcium mobilization upon activation. Together with CCL5/RANTES, may play a role in neuron survival through activation of a downstream signaling pathway involving the PI3, Akt and MAP kinases. CCL5/RANTES may also regulate insulin secretion by pancreatic islet cells through activation of this receptor.

Cellular Location

Cell membrane; Multi-pass membrane protein

Tissue Location

Expressed at high levels in brain and spinal cord and at detectable levels in retinal pigment epithelium. In situ hybridization of adult eye sections localized transcripts only to the perivascular cells, surrounding retinal arterioles, in the ganglion cell/nerve fiber layer. Also expressed by islet cells (at protein level).

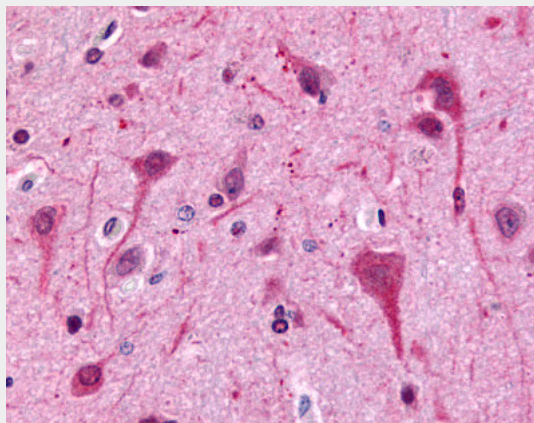
Volume

50 µl

GPR75 Antibody (C-Terminus) - Protocols

Provided below are standard protocols that you may find useful for product applications.

- [Western Blot](#)
- [Blocking Peptides](#)
- [Dot Blot](#)
- [Immunohistochemistry](#)
- [Immunofluorescence](#)
- [Immunoprecipitation](#)
- [Flow Cytometry](#)
- [Cell Culture](#)

GPR75 Antibody (C-Terminus) - Images

Anti-GPR75 antibody ALS10406 IHC of human brain, neurons and glia.

GPR75 Antibody (C-Terminus) - Background

G protein-coupled receptor that is activated by the chemokine CCL5/RANTES. Probably coupled to heterotrimeric Gq proteins, it stimulates inositol trisphosphate production and calcium mobilization upon activation. Together with CCL5/RANTES, may play a role in neuron survival through activation of a downstream signaling pathway involving the PI3, Akt and MAP kinases. CCL5/RANTES may also regulate insulin secretion by pancreatic islet cells through activation of this receptor.

GPR75 Antibody (C-Terminus) - References

Tarttelin E.E., et al. *Biochem. Biophys. Res. Commun.* 260:174-180(1999).
Ota T., et al. *Nat. Genet.* 36:40-45(2004).
Hillier L.W., et al. *Nature* 434:724-731(2005).
Mural R.J., et al. Submitted (SEP-2005) to the EMBL/GenBank/DBJ databases.
Liu B., et al. *Diabetologia* 56:2467-2476(2013).

