

**GPR75 Antibody (Cytoplasmic Domain)**  
**Rabbit Polyclonal Antibody**  
**Catalog # ALS10408****Specification**

---

**GPR75 Antibody (Cytoplasmic Domain) - Product Information**

Application	IHC-P
Primary Accession	<a href="#">O95800</a>
Reactivity	Human, Monkey
Host	Rabbit
Clonality	Polyclonal
Calculated MW	59kDa KDa
Dilution	IHC-P~~N/A

**GPR75 Antibody (Cytoplasmic Domain) - Additional Information****Gene ID** 10936**Other Names**

Probable G-protein coupled receptor 75, GPR75

**Target/Specificity**

Human GPR75. BLAST analysis of the peptide immunogen showed no homology with other human proteins.

**Reconstitution & Storage**

Long term: -70°C; Short term: +4°C

**Precautions**

GPR75 Antibody (Cytoplasmic Domain) is for research use only and not for use in diagnostic or therapeutic procedures.

**GPR75 Antibody (Cytoplasmic Domain) - Protein Information****Name** GPR75**Function**

G protein-coupled receptor that is activated by the chemokine CCL5/RANTES. Probably coupled to heterotrimeric Gq proteins, it stimulates inositol trisphosphate production and calcium mobilization upon activation. Together with CCL5/RANTES, may play a role in neuron survival through activation of a downstream signaling pathway involving the PI3, Akt and MAP kinases. CCL5/RANTES may also regulate insulin secretion by pancreatic islet cells through activation of this receptor.

**Cellular Location**

Cell membrane; Multi-pass membrane protein

**Tissue Location**

Expressed at high levels in brain and spinal cord and at detectable levels in retinal pigment epithelium. In situ hybridization of adult eye sections localized transcripts only to the perivascular cells, surrounding retinal arterioles, in the ganglion cell/nerve fiber layer. Also expressed by islet cells (at protein level).

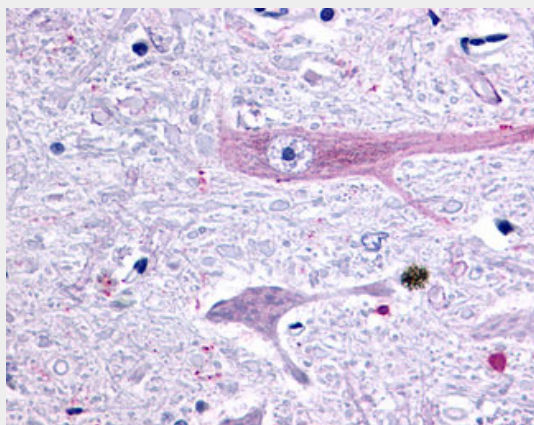
**Volume**

50 µl

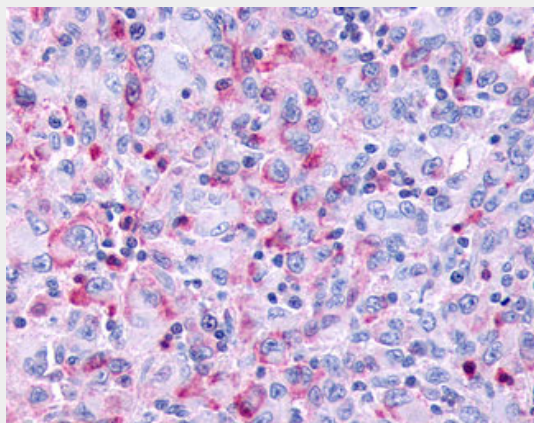
**GPR75 Antibody (Cytoplasmic Domain) - Protocols**

Provided below are standard protocols that you may find useful for product applications.

- [Western Blot](#)
- [Blocking Peptides](#)
- [Dot Blot](#)
- [Immunohistochemistry](#)
- [Immunofluorescence](#)
- [Immunoprecipitation](#)
- [Flow Cytometry](#)
- [Cell Culture](#)

**GPR75 Antibody (Cytoplasmic Domain) - Images**

Anti-GPR75 antibody ALS10408 IHC of human brain, medulla.



Anti-GPR75 antibody IHC of human Skin, Melanoma.

**GPR75 Antibody (Cytoplasmic Domain) - Background**

G protein-coupled receptor that is activated by the chemokine CCL5/RANTES. Probably coupled to heterotrimeric Gq proteins, it stimulates inositol trisphosphate production and calcium mobilization upon activation. Together with CCL5/RANTES, may play a role in neuron survival through activation of a downstream signaling pathway involving the PI3, Akt and MAP kinases. CCL5/RANTES may also regulate insulin secretion by pancreatic islet cells through activation of this receptor.

**GPR75 Antibody (Cytoplasmic Domain) - References**

Tarttelin E.E., et al. Biochem. Biophys. Res. Commun. 260:174-180(1999).  
Ota T., et al. Nat. Genet. 36:40-45(2004).  
Hillier L.W., et al. Nature 434:724-731(2005).  
Mural R.J., et al. Submitted (SEP-2005) to the EMBL/GenBank/DDBJ databases.  
Liu B., et al. Diabetologia 56:2467-2476(2013).