

**FFAR1 / GPR40 Antibody (C-Terminus)**  
**Rabbit Polyclonal Antibody**  
**Catalog # ALS10411****Specification**

---

**FFAR1 / GPR40 Antibody (C-Terminus) - Product Information**

Application	WB, IHC-P
Primary Accession	<a href="#">O14842</a>
Reactivity	Human, Monkey
Host	Rabbit
Clonality	Polyclonal
Calculated MW	31kDa KDa
Dilution	WB~~1:1000 IHC-P~~N/A

**FFAR1 / GPR40 Antibody (C-Terminus) - Additional Information****Gene ID** 2864**Other Names**

Free fatty acid receptor 1, G-protein coupled receptor 40, FFAR1, GPR40

**Target/Specificity**

Human GPR40. BLAST analysis of the peptide immunogen showed no homology with other human proteins.

**Reconstitution & Storage**

Long term: -70°C; Short term: +4°C

**Precautions**

FFAR1 / GPR40 Antibody (C-Terminus) is for research use only and not for use in diagnostic or therapeutic procedures.

**FFAR1 / GPR40 Antibody (C-Terminus) - Protein Information****Name** FFAR1**Synonyms** GPR40**Function**

G-protein coupled receptor for medium and long chain saturated and unsaturated fatty acids that plays an important role in glucose homeostasis. Fatty acid binding increases glucose-stimulated insulin secretion, and may also enhance the secretion of glucagon-like peptide 1 (GLP-1). May also play a role in bone homeostasis; receptor signaling activates pathways that inhibit osteoclast differentiation (By similarity). Ligand binding leads to a conformation change that triggers signaling via G-proteins that activate phospholipase C, leading to an increase of the intracellular calcium concentration. Seems to act through a G(q) and G(i)-mediated pathway. Mediates the anti-inflammatory effects of omega-3 polyunsaturated fatty acids (PUFAs) via inhibition of NLRP3

inflammasome activation.

**Cellular Location**

Cell membrane; Multi-pass membrane protein

**Tissue Location**

Detected in brain and pancreas. Detected in pancreatic beta cells.

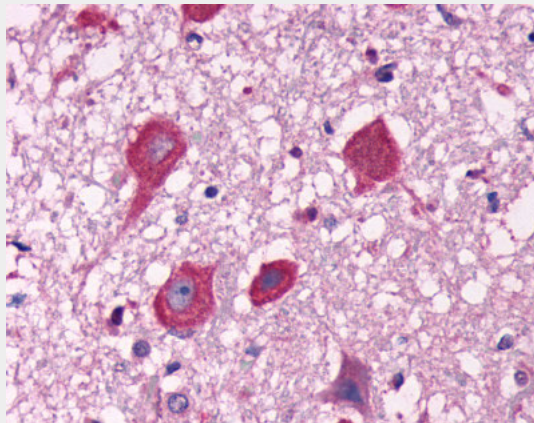
**Volume**

50  $\mu$ l

**FFAR1 / GPR40 Antibody (C-Terminus) - Protocols**

Provided below are standard protocols that you may find useful for product applications.

- [Western Blot](#)
- [Blocking Peptides](#)
- [Dot Blot](#)
- [Immunohistochemistry](#)
- [Immunofluorescence](#)
- [Immunoprecipitation](#)
- [Flow Cytometry](#)
- [Cell Culture](#)

**FFAR1 / GPR40 Antibody (C-Terminus) - Images**

Anti-GPR40 antibody ALS10411 IHC of human brain, neurons.

**FFAR1 / GPR40 Antibody (C-Terminus) - Background**

G-protein coupled receptor for medium and long chain saturated and unsaturated fatty acids that plays an important role in glucose homeostasis. Fatty acid binding increases glucose-stimulated insulin secretion, and may also enhance the secretion of glucagon-like peptide 1 (GLP-1). May also play a role in bone homeostasis; receptor signaling activates pathways that inhibit osteoclast differentiation (By similarity). Ligand binding leads to a conformation change that triggers signaling via G-proteins that activate phospholipase C, leading to an increase of the intracellular calcium concentration. Seems to act through a G(q) and G(i)-mediated pathway.

**FFAR1 / GPR40 Antibody (C-Terminus) - References**

Sawzdargo M., et al. Biochem. Biophys. Res. Commun. 239:543-547(1997).

Briscoe C.P.,et al.J. Biol. Chem. 278:11303-11311(2003).  
Tomita T.,et al.Biochem. Biophys. Res. Commun. 338:1788-1790(2005).  
Sum C.S.,et al.J. Biol. Chem. 282:29248-29255(2007).  
Sum C.S.,et al.J. Biol. Chem. 284:3529-3536(2009).