

GPR132 / G2A Antibody (C-Terminus)
Rabbit Polyclonal Antibody
Catalog # ALS10414**Specification**

GPR132 / G2A Antibody (C-Terminus) - Product Information

Application	IHC-P
Primary Accession	O9UNW8
Reactivity	Human
Host	Rabbit
Clonality	Polyclonal
Calculated MW	42kDa KDa
Dilution	IHC-P~~N/A

GPR132 / G2A Antibody (C-Terminus) - Additional Information**Gene ID** 29933**Other Names**

Probable G-protein coupled receptor 132, G2 accumulation protein, GPR132, G2A

Target/Specificity

Human GPR132 / G2A. BLAST analysis of the peptide immunogen showed no homology with other human proteins, except DNAH8 (50%).

Reconstitution & Storage

Long term: -70°C; Short term: +4°C

Precautions

GPR132 / G2A Antibody (C-Terminus) is for research use only and not for use in diagnostic or therapeutic procedures.

GPR132 / G2A Antibody (C-Terminus) - Protein Information**Name** GPR132**Synonyms** G2A**Function**

May be a receptor for oxidized free fatty acids derived from linoleic and arachidonic acids such as 9-hydroxyoctadecadienoic acid (9-HODE). Activates a G alpha protein, most likely G alpha(q). May be involved in apoptosis. Functions at the G2/M checkpoint to delay mitosis. May function as a sensor that monitors the oxidative states and mediates appropriate cellular responses such as secretion of paracrine signals and attenuation of proliferation. May mediate the accumulation of intracellular inositol phosphates at acidic pH through proton-sensing activity.

Cellular Location

Cell membrane; Multi-pass membrane protein. Note=Internalized and accumulated in endosomal

compartments. LPC triggers the relocation from the endosomal compartment to the cell surface (By similarity).

Tissue Location

Highly expressed in macrophages and hematopoietic tissues rich in lymphocytes, like spleen and thymus. Weakly expressed in heart and lung. In atherosclerotic plaques, expression is observed around the lipid core and at the shoulder region

Volume

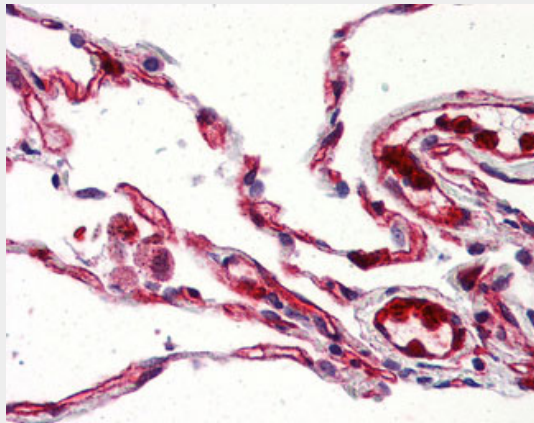
50 μ l

GPR132 / G2A Antibody (C-Terminus) - Protocols

Provided below are standard protocols that you may find useful for product applications.

- [Western Blot](#)
- [Blocking Peptides](#)
- [Dot Blot](#)
- [Immunohistochemistry](#)
- [Immunofluorescence](#)
- [Immunoprecipitation](#)
- [Flow Cytometry](#)
- [Cell Culture](#)

GPR132 / G2A Antibody (C-Terminus) - Images



Anti-GPR132 / G2A antibody ALS10414 IHC of human lung.

GPR132 / G2A Antibody (C-Terminus) - Background

May be a receptor for oxidized free fatty acids derived from linoleic and arachidonic acids such as 9- hydroxyoctadecadienoic acid (9-HODE). Activates a G alpha protein, most likely G alpha(q). May be involved in apoptosis. Functions at the G2/M checkpoint to delay mitosis. May function as a sensor that monitors the oxidative states and mediates appropriate cellular responses such as secretion of paracrine signals and attenuation of proliferation. May mediate the accumulation of intracellular inositol phosphates at acidic pH through proton- sensing activity.

GPR132 / G2A Antibody (C-Terminus) - References

Weng Z., et al. Proc. Natl. Acad. Sci. U.S.A. 95:12334-12339(1998).
Ogawa A., et al. J. Pharmacol. Exp. Ther. 332:469-478(2010).

Kaighin V.A.,et al.Submitted (DEC-2007) to the EMBL/GenBank/DDBJ databases.
Kalnine N.,et al.Submitted (MAY-2003) to the EMBL/GenBank/DDBJ databases.
Ota T.,et al.Nat. Genet. 36:40-45(2004).