

**BOB / GPR15 Antibody (Cytoplasmic Domain)**  
**Rabbit Polyclonal Antibody**  
**Catalog # ALS10417****Specification**

---

**BOB / GPR15 Antibody (Cytoplasmic Domain) - Product Information**

Application	IHC
Primary Accession	<a href="#">P49685</a>
Reactivity	Human, Monkey
Host	Rabbit
Clonality	Polyclonal
Calculated MW	41kDa KDa

**BOB / GPR15 Antibody (Cytoplasmic Domain) - Additional Information****Gene ID** 2838**Other Names**

G-protein coupled receptor 15, Brother of Bonzo, BoB, GPR15

**Target/Specificity**

Human GPR15. BLAST analysis of the peptide immunogen showed no homology with other human proteins.

**Reconstitution & Storage**

Long term: -70°C; Short term: +4°C

**Precautions**

BOB / GPR15 Antibody (Cytoplasmic Domain) is for research use only and not for use in diagnostic or therapeutic procedures.

**BOB / GPR15 Antibody (Cytoplasmic Domain) - Protein Information****Name** GPR15**Function**

Probable chemokine receptor. Alternative coreceptor with CD4 for HIV-1 infection.

**Cellular Location**

Cell membrane; Multi-pass membrane protein.

**Volume**

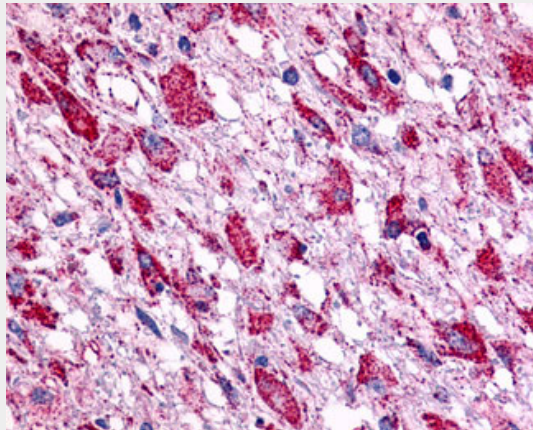
50 µl

**BOB / GPR15 Antibody (Cytoplasmic Domain) - Protocols**

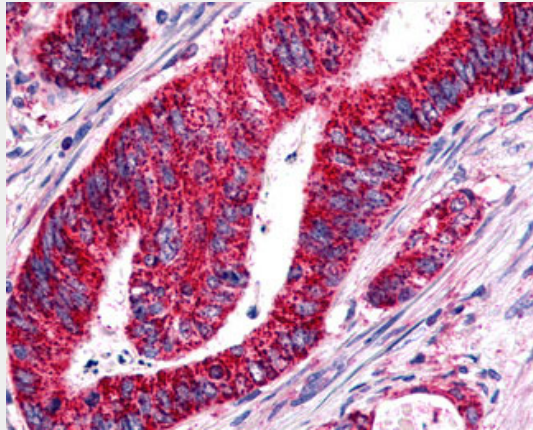
Provided below are standard protocols that you may find useful for product applications.

- [Western Blot](#)
- [Blocking Peptides](#)
- [Dot Blot](#)
- [Immunohistochemistry](#)
- [Immunofluorescence](#)
- [Immunoprecipitation](#)
- [Flow Cytometry](#)
- [Cell Culture](#)

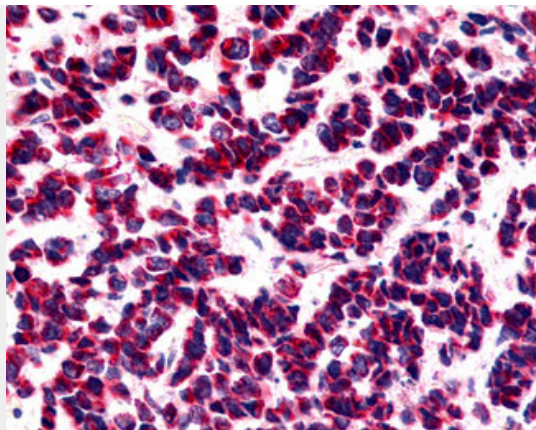
**BOB / GPR15 Antibody (Cytoplasmic Domain) - Images**



Anti-BOB / GPR15 antibody IHC of human Brain, Glioblastoma.



Anti-BOB / GPR15 antibody IHC of human Colon, Carcinoma.



Anti-BOB / GPR15 antibody IHC of human Lung, Small Cell Carcinoma.

#### **BOB / GPR15 Antibody (Cytoplasmic Domain) - Background**

Probable chemokine receptor. Alternative coreceptor with CD4 for HIV-1 infection.

#### **BOB / GPR15 Antibody (Cytoplasmic Domain) - References**

Heiber M., et al. Genomics 32:462-465(1996).