

BOB / GPR15 Antibody (Extracellular Domain)
Rabbit Polyclonal Antibody
Catalog # ALS10418**Specification**

BOB / GPR15 Antibody (Extracellular Domain) - Product Information

Application	IHC-P
Primary Accession	P49685
Reactivity	Human
Host	Rabbit
Clonality	Polyclonal
Calculated MW	41kDa KDa
Dilution	IHC-P ~ ~ N/A

BOB / GPR15 Antibody (Extracellular Domain) - Additional Information**Gene ID** 2838**Other Names**

G-protein coupled receptor 15, Brother of Bonzo, BoB, GPR15

Target/Specificity

Human GPR15. BLAST analysis of the peptide immunogen showed no homology with other human proteins.

Reconstitution & Storage

Long term: -70°C; Short term: +4°C

Precautions

BOB / GPR15 Antibody (Extracellular Domain) is for research use only and not for use in diagnostic or therapeutic procedures.

BOB / GPR15 Antibody (Extracellular Domain) - Protein Information**Name** GPR15**Function**

G protein-coupled receptor that plays an important role in immune homeostasis (PubMed: [33758080](http://www.uniprot.org/citations/33758080), PubMed: [38918398](http://www.uniprot.org/citations/38918398)). Acts via its natural ligand GPR15LG, a chemokine-like polypeptide strongly expressed in gastrointestinal tissues. GPR15-GPR15LG signaling axis regulates intestinal homeostasis and inflammation through the migration of immune cells (PubMed: [33758080](http://www.uniprot.org/citations/33758080), PubMed: [38918398](http://www.uniprot.org/citations/38918398)). Controls thereby the specific homing of T-cells, particularly FOXP3+ regulatory T-cells (Tregs), to the large intestine lamina propria (By similarity). Also required for skin localization of thymus-derived dendritic epidermal T-cells (By similarity). Plays an important role in mediating cytoprotective function as well as angiogenesis of thrombomodulin (By

similarity). Mechanistically, preferentially signals through the Gi/o pathway to inhibit adenylate cyclase activity and activate a phosphatidylinositol- calcium second messenger system that regulates the release of Ca(2+) ions from intracellular stores (PubMed:35510660).

Cellular Location

Cell membrane; Multi-pass membrane protein

Tissue Location

Highly expressed in lymphoid tissues, including macrophages and peripheral blood mononuclear cells

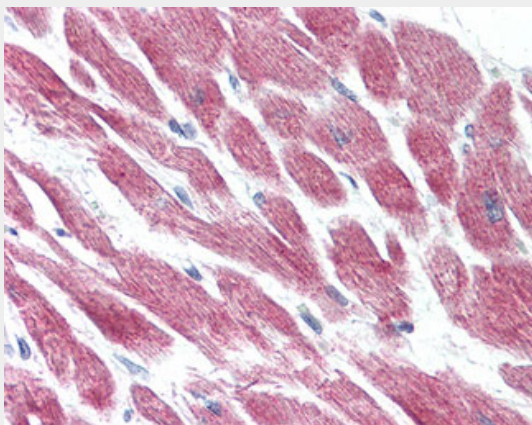
Volume

50 µl

BOB / GPR15 Antibody (Extracellular Domain) - Protocols

Provided below are standard protocols that you may find useful for product applications.

- [Western Blot](#)
- [Blocking Peptides](#)
- [Dot Blot](#)
- [Immunohistochemistry](#)
- [Immunofluorescence](#)
- [Immunoprecipitation](#)
- [Flow Cytometry](#)
- [Cell Culture](#)

BOB / GPR15 Antibody (Extracellular Domain) - Images

Anti-GPR15 antibody ALS10418 IHC of human heart.

BOB / GPR15 Antibody (Extracellular Domain) - Background

Probable chemokine receptor. Alternative coreceptor with CD4 for HIV-1 infection.

BOB / GPR15 Antibody (Extracellular Domain) - References

Heiber M., et al. Genomics 32:462-465(1996).