

**GPR61 Antibody (C-Terminus)**  
**Rabbit Polyclonal Antibody**  
**Catalog # ALS10431****Specification**

---

**GPR61 Antibody (C-Terminus) - Product Information**

Application	IHC-P, E
Primary Accession	<a href="#">O9BZJ8</a>
Reactivity	Human, Monkey
Host	Rabbit
Clonality	Polyclonal
Calculated MW	49kDa KDa
Dilution	IHC-P~~N/A E~~N/A

**GPR61 Antibody (C-Terminus) - Additional Information****Gene ID** 83873**Other Names**

Probable G-protein coupled receptor 61, Biogenic amine receptor-like G-protein coupled receptor, GPR61, BALGR

**Target/Specificity**

Human GPR61. BLAST analysis of the peptide immunogen showed no homology with other human proteins.

**Reconstitution & Storage**

Long term: -70°C; Short term: +4°C

**Precautions**

GPR61 Antibody (C-Terminus) is for research use only and not for use in diagnostic or therapeutic procedures.

**GPR61 Antibody (C-Terminus) - Protein Information****Name** GPR61**Synonyms** BALGR {ECO:0000303|PubMed:11690637}, GPC**Function**

Orphan G-protein coupled receptor. Constitutively activates the G(s)-alpha/cAMP signaling pathway (PubMed:&lt;a href="http://www.uniprot.org/citations/28827538" target="\_blank"&gt;28827538&lt;/a&gt;). Shows a reciprocal regulatory interaction with the melatonin receptor MTNR1B most likely through receptor heteromerization (PubMed:&lt;a href="http://www.uniprot.org/citations/28827538" target="\_blank"&gt;28827538&lt;/a&gt;). May be involved in the regulation of food intake and body weight (By similarity).

### Cellular Location

Cell membrane; Multi-pass membrane protein. Endosome membrane; Multi- pass membrane protein. Note=Colocalizes with ARRB2/beta- arrestin-2 in the endosome (PubMed:28827538)

### Tissue Location

Expressed in brain; detected in frontal and temporal lobes, occipital pole, amygdala and hippocampus (PubMed:11690637, PubMed:29226084). Also expressed in testis (PubMed:11690637, PubMed:29226084) and T cells, B cells, and monocyte (PubMed:29226084). Low expression in many other tissues (PubMed:11690637, PubMed:29226084). Widely expressed in the hippocampus (at protein level).

### Volume

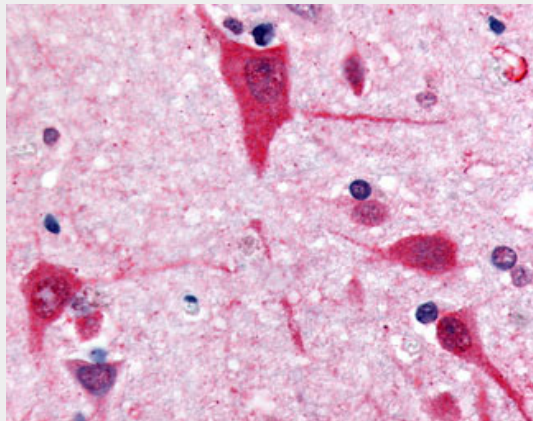
50  $\mu$ l

### GPR61 Antibody (C-Terminus) - Protocols

Provided below are standard protocols that you may find useful for product applications.

- [Western Blot](#)
- [Blocking Peptides](#)
- [Dot Blot](#)
- [Immunohistochemistry](#)
- [Immunofluorescence](#)
- [Immunoprecipitation](#)
- [Flow Cytometry](#)
- [Cell Culture](#)

### GPR61 Antibody (C-Terminus) - Images



Anti-GPR61 antibody ALS10431 IHC of human brain, cortex.

### GPR61 Antibody (C-Terminus) - Background

Orphan receptor.

### GPR61 Antibody (C-Terminus) - References

Lee D.K.,et al.Brain Res. Mol. Brain Res. 86:13-22(2001).  
Cikos S.,et al.Biochim. Biophys. Acta 1521:66-72(2001).  
Takeda S.,et al.FEBS Lett. 520:97-101(2002).  
Ota T.,et al.Nat. Genet. 36:40-45(2004).

Gregory S.G., et al. Nature 441:315-321(2006).