

**ADGRV1 / GPR98 Antibody (Internal)**  
**Rabbit Polyclonal Antibody**  
**Catalog # ALS10440****Specification**

---

**ADGRV1 / GPR98 Antibody (Internal) - Product Information**

Application	IHC
Primary Accession	<a href="#">Q8WXG9</a>
Reactivity	Human
Host	Rabbit
Clonality	Polyclonal
Calculated MW	693kDa KDa

**ADGRV1 / GPR98 Antibody (Internal) - Additional Information****Gene ID** 84059**Other Names**

G-protein coupled receptor 98, Monogenic audiogenic seizure susceptibility protein 1 homolog, Usher syndrome type-2C protein, Very large G-protein coupled receptor 1, GPR98, KIAA0686, KIAA1943, MASS1, VLGR1

**Target/Specificity**

Human GPR98. BLAST analysis of the peptide immunogen showed no homology with other human proteins.

**Reconstitution & Storage**

Short term: +4°C. Long term: aliquot and store at -70°C.

**Precautions**

ADGRV1 / GPR98 Antibody (Internal) is for research use only and not for use in diagnostic or therapeutic procedures.

**ADGRV1 / GPR98 Antibody (Internal) - Protein Information****Name** ADGRV1 ([HGNC:17416](#))**Function**

G-protein coupled receptor which has an essential role in the development of hearing and vision. Couples to G-alpha(i)-proteins, GNAI1/2/3, G-alpha(q)-proteins, GNAQ, as well as G-alpha(s)-proteins, GNAS, inhibiting adenylate cyclase (AC) activity and cAMP production. Required for the hair bundle ankle formation, which connects growing stereocilia in developing cochlear hair cells of the inner ear. In response to extracellular calcium, activates kinases PKA and PKC to regulate myelination by inhibiting the ubiquitination of MAG, thus enhancing the stability of this protein in myelin-forming cells of the auditory pathway. In retina photoreceptors, the USH2 complex is required for the maintenance of periciliary membrane complex that seems to play a role in regulating intracellular protein transport. Involved in the regulation of bone metabolism.

**Cellular Location**

Cell membrane {ECO:0000250|UniProtKB:Q8VHN7}; Multi-pass membrane protein {ECO:0000250|UniProtKB:Q8VHN7}. Cell projection, stereocilium membrane {ECO:0000250|UniProtKB:Q8VHN7} Photoreceptor inner segment {ECO:0000250|UniProtKB:Q8VHN7} Note=Localizes at the ankle region of the stereocilia. In photoreceptors, localizes at a plasma membrane microdomain in the apical inner segment that surrounds the connecting cilia called periciliary membrane complex. {ECO:0000250|UniProtKB:Q8VHN7}

**Tissue Location**

Expressed at low levels in adult tissues.

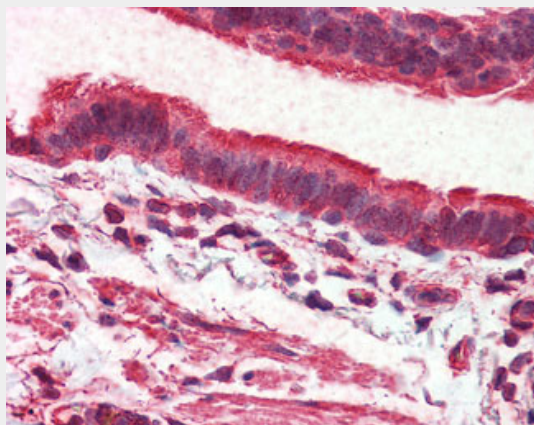
**Volume**

50 µl

**ADGRV1 / GPR98 Antibody (Internal) - Protocols**

Provided below are standard protocols that you may find useful for product applications.

- [Western Blot](#)
- [Blocking Peptides](#)
- [Dot Blot](#)
- [Immunohistochemistry](#)
- [Immunofluorescence](#)
- [Immunoprecipitation](#)
- [Flow Cytometry](#)
- [Cell Culture](#)

**ADGRV1 / GPR98 Antibody (Internal) - Images**

Anti-GPR98 antibody ALS10440 IHC of human lung, respiratory epithelium.

**ADGRV1 / GPR98 Antibody (Internal) - Background**

Receptor that may have an important role in the development of the central nervous system.

**ADGRV1 / GPR98 Antibody (Internal) - References**

Nikkila H., et al. Mol. Endocrinol. 14:1351-1364(2000).  
McMillan D.R., et al. J. Biol. Chem. 277:785-792(2002).  
Schmutz J., et al. Nature 431:268-274(2004).

Nagase T.,et al.DNA Res. 8:319-327(2001).  
Wiemann S.,et al.Genome Res. 11:422-435(2001).