

**GPCR6 / GPR101 Antibody (Cytoplasmic Domain)**  
**Rabbit Polyclonal Antibody**  
**Catalog # ALS10453****Specification**

---

**GPCR6 / GPR101 Antibody (Cytoplasmic Domain) - Product Information**

Application	IHC-P
Primary Accession	<a href="#">Q96P66</a>
Reactivity	Human
Host	Rabbit
Clonality	Polyclonal
Calculated MW	57kDa KDa
Dilution	IHC-P~~N/A

**GPCR6 / GPR101 Antibody (Cytoplasmic Domain) - Additional Information****Gene ID** 83550**Other Names**

Probable G-protein coupled receptor 101, GPR101

**Target/Specificity**

Human GPR101. BLAST analysis of the peptide immunogen showed no homology with other human proteins, except ZBTB10 (47%).

**Reconstitution & Storage**

Long term: -70°C; Short term: +4°C

**Precautions**

GPCR6 / GPR101 Antibody (Cytoplasmic Domain) is for research use only and not for use in diagnostic or therapeutic procedures.

**GPCR6 / GPR101 Antibody (Cytoplasmic Domain) - Protein Information****Name** GPR101**Function**

Orphan receptor.

**Cellular Location**

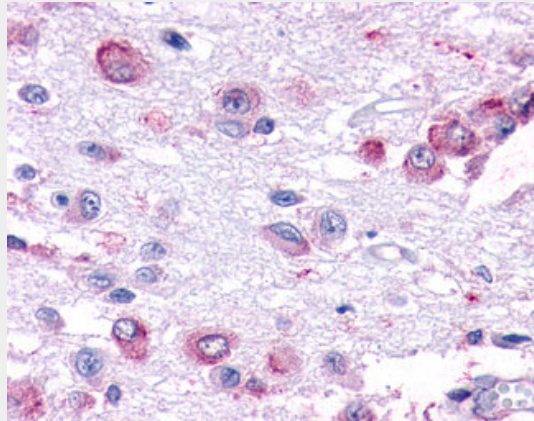
Cell membrane; Multi-pass membrane protein.

**GPCR6 / GPR101 Antibody (Cytoplasmic Domain) - Protocols**

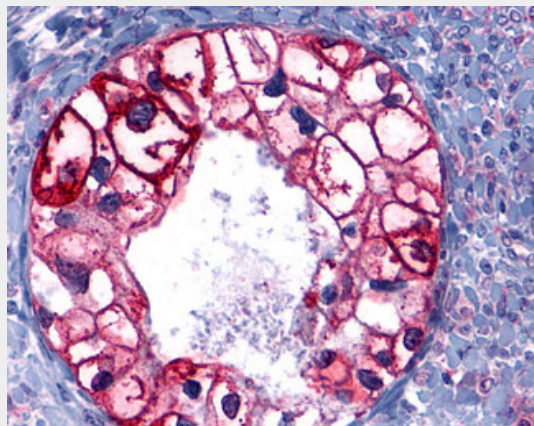
Provided below are standard protocols that you may find useful for product applications.

- [Western Blot](#)
- [Blocking Peptides](#)
- [Dot Blot](#)
- [Immunohistochemistry](#)
- [Immunofluorescence](#)
- [Immunoprecipitation](#)
- [Flow Cytometry](#)
- [Cell Culture](#)

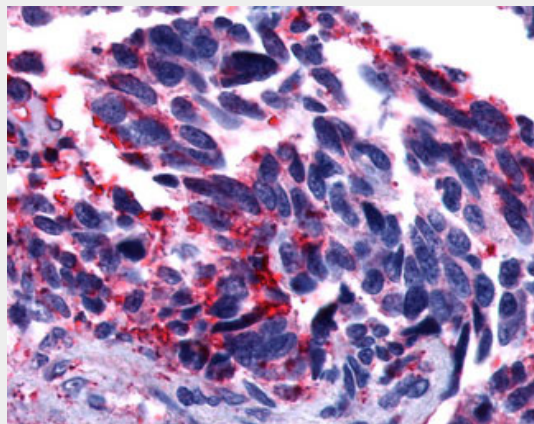
### GPCR6 / GPR101 Antibody (Cytoplasmic Domain) - Images



Anti-GPR101 antibody ALS10453 IHC of human brain, hypothalamus.



Anti-GPCR6 / GPR101 antibody IHC of human Ovary, Carcinoma.



Anti-GPCR6 / GPR101 antibody IHC of human Lung, Small Cell Carcinoma.

### **GPCR6 / GPR101 Antibody (Cytoplasmic Domain) - Background**

Orphan receptor.

### **GPCR6 / GPR101 Antibody (Cytoplasmic Domain) - References**

- Lee D.K.,et al.Gene 275:83-91(2001).  
Takeda S.,et al.FEBS Lett. 520:97-101(2002).  
Mural R.J.,et al.Submitted (SEP-2005) to the EMBL/GenBank/DDBJ databases.  
Suwa M.,et al.Submitted (JUL-2001) to the EMBL/GenBank/DDBJ databases.  
Ross M.T.,et al.Nature 434:325-337(2005).