

PGR1 / GPR153 Antibody (Extracellular Domain)
Rabbit Polyclonal Antibody
Catalog # ALS10495

Specification

PGR1 / GPR153 Antibody (Extracellular Domain) - Product Information

Application	IHC
Primary Accession	Q6NV75
Reactivity	Human, Mouse, Rabbit, Hamster, Monkey, Pig, Bovine, Dog
Host	Rabbit
Clonality	Polyclonal
Calculated MW	65kDa KDa

PGR1 / GPR153 Antibody (Extracellular Domain) - Additional Information

Gene ID 387509

Other Names

Probable G-protein coupled receptor 153, G-protein coupled receptor PGR1, GPR153, PGR1

Target/Specificity

Human GPR153. BLAST analysis of the peptide immunogen showed no homology with other human proteins, except GPR162 (53%).

Reconstitution & Storage

Long term: -70°C; Short term: +4°C

Precautions

PGR1 / GPR153 Antibody (Extracellular Domain) is for research use only and not for use in diagnostic or therapeutic procedures.

PGR1 / GPR153 Antibody (Extracellular Domain) - Protein Information

Name GPR153

Synonyms PGR1

Function

Orphan receptor.

Cellular Location

Cell membrane; Multi-pass membrane protein.

Volume

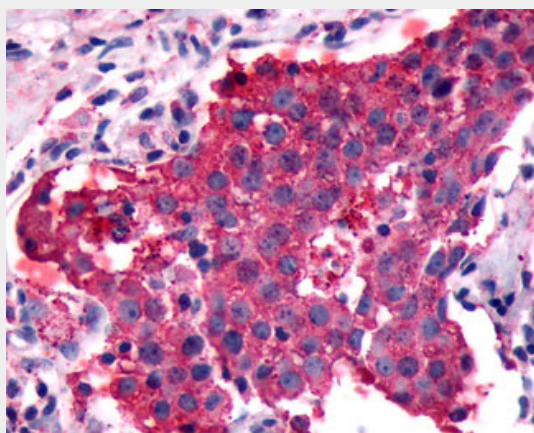
50 µl

PGR1 / GPR153 Antibody (Extracellular Domain) - Protocols

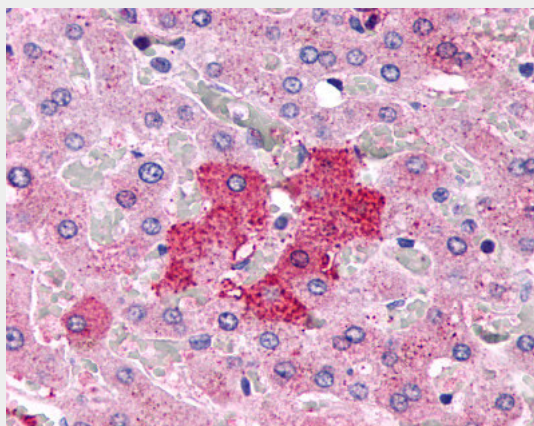
Provided below are standard protocols that you may find useful for product applications.

- [Western Blot](#)
- [Blocking Peptides](#)
- [Dot Blot](#)
- [Immunohistochemistry](#)
- [Immunofluorescence](#)
- [Immunoprecipitation](#)
- [Flow Cytometry](#)
- [Cell Culture](#)

PGR1 / GPR153 Antibody (Extracellular Domain) - Images



Anti-PGR1 / GPR153 antibody IHC of human Breast, Carcinoma.



Anti-GPR153 antibody ALS10495 IHC of human liver, hepatocytes.

PGR1 / GPR153 Antibody (Extracellular Domain) - Background

Orphan receptor.

PGR1 / GPR153 Antibody (Extracellular Domain) - References

Gregory S.G., et al. Nature 441:315-321(2006).
Vassilatis D.K., et al. Proc. Natl. Acad. Sci. U.S.A. 100:4903-4908(2003).
Bechtel S., et al. BMC Genomics 8:399-399(2007).