

**GPBB / PYGB Antibody (Internal)**  
**Rabbit Polyclonal Antibody**  
**Catalog # ALS10536****Specification**

---

**GPBB / PYGB Antibody (Internal) - Product Information**

Application	IHC-P
Primary Accession	<a href="#">P11216</a>
Reactivity	Human, Monkey
Host	Rabbit
Clonality	Polyclonal
Calculated MW	97kDa KDa
Dilution	IHC-P~~N/A

**GPBB / PYGB Antibody (Internal) - Additional Information****Gene ID** 5834**Other Names**

Glycogen phosphorylase, brain form, 2.4.1.1, PYGB

**Target/Specificity**

Human PYGB. BLAST analysis of the peptide immunogen showed no homology with other human proteins.

**Reconstitution & Storage**

Long term: -70°C; Short term: +4°C

**Precautions**

GPBB / PYGB Antibody (Internal) is for research use only and not for use in diagnostic or therapeutic procedures.

**GPBB / PYGB Antibody (Internal) - Protein Information****Name** PYGB {ECO:0000303|PubMed:3346228}**Function**

Glycogen phosphorylase that regulates glycogen mobilization (PubMed:[27402852](http://www.uniprot.org/citations/27402852)). Phosphorylase is an important allosteric enzyme in carbohydrate metabolism (PubMed:[3346228](http://www.uniprot.org/citations/3346228)). Enzymes from different sources differ in their regulatory mechanisms and in their natural substrates (PubMed:[3346228](http://www.uniprot.org/citations/3346228)). However, all known phosphorylases share catalytic and structural properties (PubMed:[3346228](http://www.uniprot.org/citations/3346228)).

**Volume**

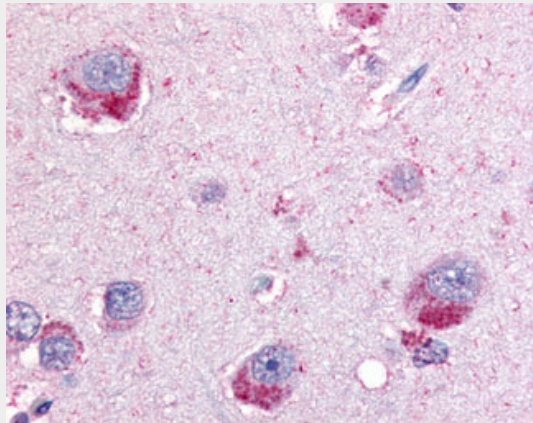
50 µl

## GPBB / PYGB Antibody (Internal) - Protocols

Provided below are standard protocols that you may find useful for product applications.

- [Western Blot](#)
- [Blocking Peptides](#)
- [Dot Blot](#)
- [Immunohistochemistry](#)
- [Immunofluorescence](#)
- [Immunoprecipitation](#)
- [Flow Cytometry](#)
- [Cell Culture](#)

## GPBB / PYGB Antibody (Internal) - Images



Anti-PYGB antibody ALS10536 IHC of human brain.

## GPBB / PYGB Antibody (Internal) - Background

Phosphorylase is an important allosteric enzyme in carbohydrate metabolism. Enzymes from different sources differ in their regulatory mechanisms and in their natural substrates. However, all known phosphorylases share catalytic and structural properties.

## GPBB / PYGB Antibody (Internal) - References

- Newgard C.B., et al. *J. Biol. Chem.* 263:3850-3857(1988).  
Gelin R.P., et al. *Brain Res. Mol. Brain Res.* 6:177-185(1989).  
Deloukas P., et al. *Nature* 414:865-871(2001).  
Gevaert K., et al. *Nat. Biotechnol.* 21:566-569(2003).  
Bienvenut W.V., et al. Submitted (JUL-2007) to UniProtKB.