

TAAR6 Antibody (C-Terminus)
Rabbit Polyclonal Antibody
Catalog # ALS10541**Specification**

TAAR6 Antibody (C-Terminus) - Product Information

Application	IHC-P
Primary Accession	Q96RI8
Reactivity	Human, Monkey
Host	Rabbit
Clonality	Polyclonal
Calculated MW	38kDa KDa
Dilution	IHC-P~~N/A

TAAR6 Antibody (C-Terminus) - Additional Information**Gene ID** 319100**Other Names**

Trace amine-associated receptor 6, TaR-6, Trace amine receptor 6, Trace amine receptor 4, TaR-4, TAAR6, TA4, TAR4, TRAR4

Target/Specificity

Human TAAR6. BLAST analysis of the peptide immunogen showed no homology with other human proteins.

Reconstitution & Storage

Long term: -70°C; Short term: +4°C

Precautions

TAAR6 Antibody (C-Terminus) is for research use only and not for use in diagnostic or therapeutic procedures.

TAAR6 Antibody (C-Terminus) - Protein Information**Name** TAAR6 ([HGNC:20978](#))**Function**

Olfactory receptor specific for trace amines, such as beta- phenylethylamine (beta-PEA). Trace amine compounds are enriched in animal body fluids and act on trace amine-associated receptors (TAARs) to elicit both intraspecific and interspecific innate behaviors. Beta- PEA-binding causes a conformation change that triggers signaling via G(s)-class of G alpha proteins (GNAL or GNAS).

Cellular Location

Cell membrane; Multi-pass membrane protein

Tissue Location

Expressed at low abundance in various brain tissues, as well as in fetal liver, but not in the

cerebellum or placenta (PubMed:15329799). In the brain, comparable levels of expression in basal ganglia, frontal cortex, substantia nigra, amygdala and hippocampus, highest expression in hippocampus and lowest expression in basal ganglia (PubMed:15329799)

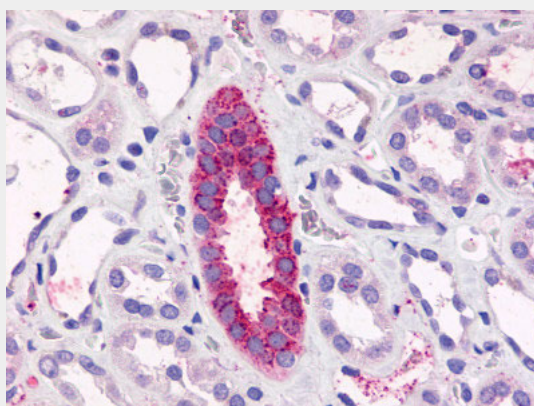
Volume
50 μ l

TAAR6 Antibody (C-Terminus) - Protocols

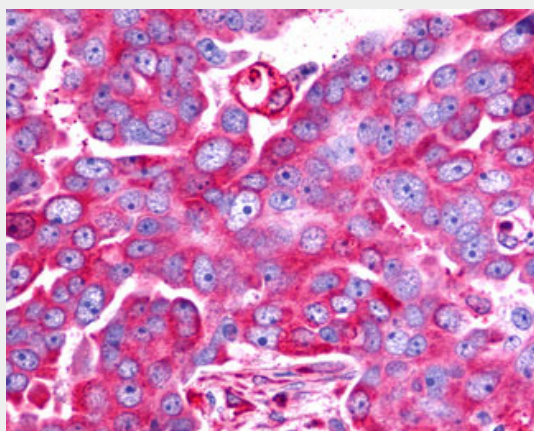
Provided below are standard protocols that you may find useful for product applications.

- [Western Blot](#)
- [Blocking Peptides](#)
- [Dot Blot](#)
- [Immunohistochemistry](#)
- [Immunofluorescence](#)
- [Immunoprecipitation](#)
- [Flow Cytometry](#)
- [Cell Culture](#)

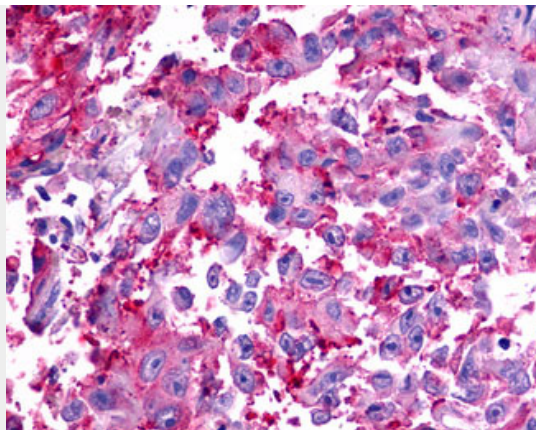
TAAR6 Antibody (C-Terminus) - Images



Anti-TAAR6 antibody ALS10541 IHC of human kidney, renal tubules.



Anti-TAAR6 antibody IHC of human Ovary, Carcinoma.



Anti-TAAR6 antibody IHC of human Skin, Melanoma.

TAAR6 Antibody (C-Terminus) - Background

Orphan receptor. Could be a receptor for trace amines. Trace amines are biogenic amines present in very low levels in mammalian tissues. Although some trace amines have clearly defined roles as neurotransmitters in invertebrates, the extent to which they function as true neurotransmitters in vertebrates has remained speculative. Trace amines are likely to be involved in a variety of physiological functions that have yet to be fully understood.

TAAR6 Antibody (C-Terminus) - References

Borowsky B., et al. Proc. Natl. Acad. Sci. U.S.A. 98:8966-8971(2001).
Kopatz S.A., et al. Submitted (NOV-2002) to the EMBL/GenBank/DDBJ databases.
Mungall A.J., et al. Nature 425:805-811(2003).
Duan J., et al. Am. J. Hum. Genet. 75:624-638(2004).