

NR2E1 / TLX Antibody (N-Terminus)
Rabbit Polyclonal Antibody
Catalog # ALS10552**Specification**

NR2E1 / TLX Antibody (N-Terminus) - Product Information

Application	IHC
Primary Accession	Q9Y466
Reactivity	Human, Rabbit, Monkey, Pig, Horse, Bovine, Dog
Host	Rabbit
Clonality	Polyclonal
Calculated MW	43kDa KDa

NR2E1 / TLX Antibody (N-Terminus) - Additional Information**Gene ID** 7101**Other Names**

Nuclear receptor subfamily 2 group E member 1, Nuclear receptor TLX, Protein tailless homolog, TII, hTII, NR2E1, TLX

Target/Specificity

Human NR2E1. BLAST analysis of the peptide immunogen showed no homology with other human proteins.

Reconstitution & Storage

Long term: -70°C; Short term: +4°C

Precautions

NR2E1 / TLX Antibody (N-Terminus) is for research use only and not for use in diagnostic or therapeutic procedures.

NR2E1 / TLX Antibody (N-Terminus) - Protein Information**Name** NR2E1**Synonyms** TLX**Function**

Orphan receptor that binds DNA as a monomer to hormone response elements (HRE) containing an extended core motif half-site sequence 5'-AAGGTCA-3' in which the 5' flanking nucleotides participate in determining receptor specificity (By similarity). May be required to pattern anterior brain differentiation. Involved in the regulation of retinal development and essential for vision. During retinogenesis, regulates PTEN-Cyclin D expression via binding to the promoter region of PTEN and suppressing its activity (By similarity). May be involved in retinoic acid receptor (RAR) regulation in retinal cells.

Cellular Location

Nucleus {ECO:0000255|PROSITE-ProRule:PRU00407}.

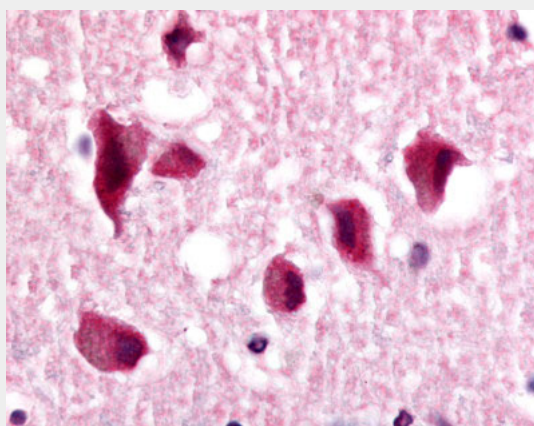
Tissue Location

Brain specific. Present in all brain sections tested, highest levels in the caudate nucleus and hippocampus, weakest levels in the thalamus.

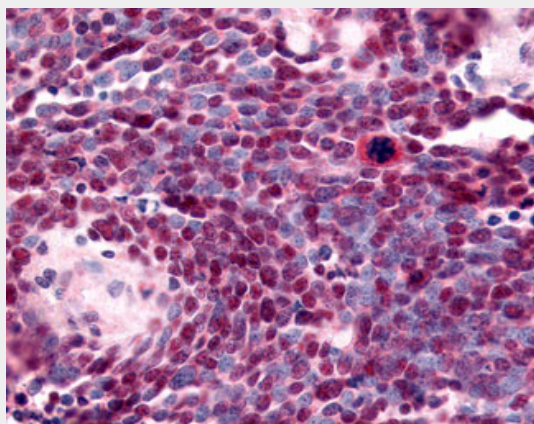
NR2E1 / TLX Antibody (N-Terminus) - Protocols

Provided below are standard protocols that you may find useful for product applications.

- [Western Blot](#)
- [Blocking Peptides](#)
- [Dot Blot](#)
- [Immunohistochemistry](#)
- [Immunofluorescence](#)
- [Immunoprecipitation](#)
- [Flow Cytometry](#)
- [Cell Culture](#)

NR2E1 / TLX Antibody (N-Terminus) - Images

Anti-NR2E1 antibody ALS10552 IHC of human brain, neurons and glia.



Anti-NR2E1 / TLX antibody IHC of human Lung, Small Cell Carcinoma.

NR2E1 / TLX Antibody (N-Terminus) - Background

Orphan receptor that binds DNA as a monomer to hormone response elements (HRE) containing an extended core motif half- site sequence 5'-AAGGTCA-3' in which the 5' flanking nucleotides participate in determining receptor specificity (By similarity). May be required to pattern anterior brain differentiation. Involved in the regulation of retinal development and essential for vision. During retinogenesis, regulates PTEN-Cyclin D expression via binding to the promoter region of PTEN and suppressing its activity (By similarity). May be involved in retinoic acid receptor (RAR) regulation in retinal cells.

NR2E1 / TLX Antibody (N-Terminus) - References

Jackson A.,et al.Genomics 50:34-43(1998).
Kobayashi M.,et al.Mol. Cell. Biol. 20:8731-8739(2000).
Hua F.,et al.Submitted (AUG-2001) to the EMBL/GenBank/DDBJ databases.
Ota T.,et al.Nat. Genet. 36:40-45(2004).
Mungall A.J.,et al.Nature 425:805-811(2003).