

**GPR82 Antibody (Cytoplasmic Domain)**  
**Rabbit Polyclonal Antibody**  
**Catalog # ALS10573****Specification**

---

**GPR82 Antibody (Cytoplasmic Domain) - Product Information**

Application	IHC-P
Primary Accession	<a href="#">Q96P67</a>
Reactivity	Human, Monkey, Dog
Host	Rabbit
Clonality	Polyclonal
Calculated MW	38kDa KDa
Dilution	IHC-P~~N/A

**GPR82 Antibody (Cytoplasmic Domain) - Additional Information****Gene ID** 27197**Other Names**

Probable G-protein coupled receptor 82, GPR82

**Target/Specificity**

Human GPR82. BLAST analysis of the peptide immunogen showed no homology with other human proteins.

**Reconstitution & Storage**

Long term: -70°C; Short term: +4°C

**Precautions**

GPR82 Antibody (Cytoplasmic Domain) is for research use only and not for use in diagnostic or therapeutic procedures.

**GPR82 Antibody (Cytoplasmic Domain) - Protein Information****Name** GPR82**Function**

Orphan receptor.

**Cellular Location**

Cell membrane; Multi-pass membrane protein.

**Volume**

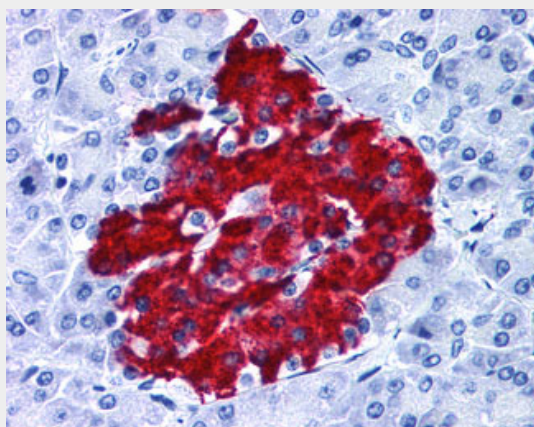
50 µl

**GPR82 Antibody (Cytoplasmic Domain) - Protocols**

Provided below are standard protocols that you may find useful for product applications.

- [Western Blot](#)
- [Blocking Peptides](#)
- [Dot Blot](#)
- [Immunohistochemistry](#)
- [Immunofluorescence](#)
- [Immunoprecipitation](#)
- [Flow Cytometry](#)
- [Cell Culture](#)

#### **GPR82 Antibody (Cytoplasmic Domain) - Images**



Anti-GPR82 antibody ALS10573 IHC of human pancreas.

#### **GPR82 Antibody (Cytoplasmic Domain) - Background**

Orphan receptor.

#### **GPR82 Antibody (Cytoplasmic Domain) - References**

- Lee D.K., et al. Gene 275:83-91(2001).  
von Kugelgen I., et al. Submitted (AUG-2003) to the EMBL/GenBank/DDBJ databases.  
Kaighin V.A., et al. Submitted (DEC-2011) to the EMBL/GenBank/DDBJ databases.  
Suwa M., et al. Submitted (JUL-2001) to the EMBL/GenBank/DDBJ databases.  
Ota T., et al. Nat. Genet. 36:40-45(2004).