

Prostaglandin D2 Receptor Antibody (Extracellular Domain)
Rabbit Polyclonal Antibody
Catalog # ALS10640**Specification**

Prostaglandin D2 Receptor Antibody (Extracellular Domain) - Product Information

Application	IHC
Primary Accession	Q13258
Reactivity	Human
Host	Rabbit
Clonality	Polyclonal
Calculated MW	40kDa KDa

Prostaglandin D2 Receptor Antibody (Extracellular Domain) - Additional Information**Gene ID** 5729**Other Names**

Prostaglandin D2 receptor, PGD receptor, PGD2 receptor, Prostanoid DP receptor, PTGDR

Target/Specificity

Human Prostaglandin D2 Receptor. BLAST analysis of the peptide immunogen showed no homology with other human proteins.

Reconstitution & Storage

Long term: -70°C; Short term: +4°C

Precautions

Prostaglandin D2 Receptor Antibody (Extracellular Domain) is for research use only and not for use in diagnostic or therapeutic procedures.

Prostaglandin D2 Receptor Antibody (Extracellular Domain) - Protein Information**Name** PTGDR**Function**

Receptor for prostaglandin D2 (PGD2). The activity of this receptor is mainly mediated by G(s) proteins that stimulate adenylate cyclase, resulting in an elevation of intracellular cAMP. A mobilization of calcium is also observed, but without formation of inositol 1,4,5-trisphosphate (By similarity). Involved in PLA2G3- dependent maturation of mast cells. PLA2G3 is secreted by immature mast cells and acts on nearby fibroblasts upstream to PTDGS to synthesize PGD2, which in turn promotes mast cell maturation and degranulation via PTGDR (By similarity).

Cellular Location

Cell membrane; Multi-pass membrane protein

Tissue Location

Expressed in retinal choroid, ciliary epithelium, longitudinal and circular ciliary muscles, iris, small

intestine and platelet membranes.

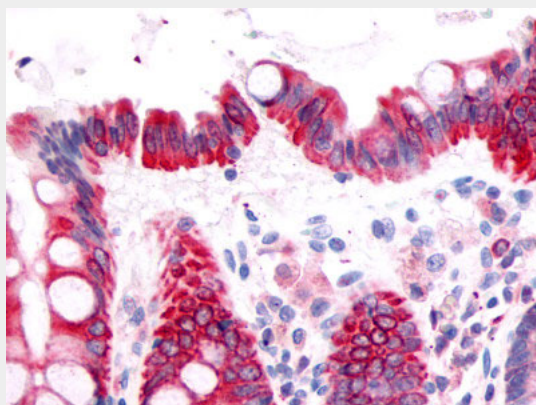
Volume
50 µl

Prostaglandin D2 Receptor Antibody (Extracellular Domain) - Protocols

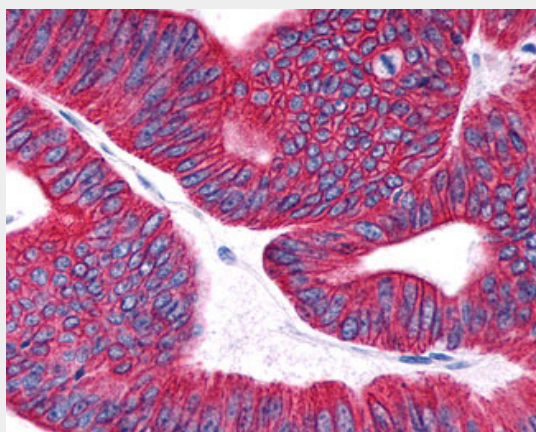
Provided below are standard protocols that you may find useful for product applications.

- [Western Blot](#)
- [Blocking Peptides](#)
- [Dot Blot](#)
- [Immunohistochemistry](#)
- [Immunofluorescence](#)
- [Immunoprecipitation](#)
- [Flow Cytometry](#)
- [Cell Culture](#)

Prostaglandin D2 Receptor Antibody (Extracellular Domain) - Images



Anti-Prostaglandin D2 Receptor antibody ALS10640 IHC of human colon, epithelium.



Anti-PTGDR / DP antibody IHC of human Colon, Carcinoma.

Prostaglandin D2 Receptor Antibody (Extracellular Domain) - Background

Receptor for prostaglandin D2 (PGD₂). The activity of this receptor is mainly mediated by G(s) proteins that stimulate adenylate cyclase, resulting in an elevation of intracellular cAMP. A

mobilization of calcium is also observed, but without formation of inositol 1,4,5-trisphosphate (By similarity).

Prostaglandin D2 Receptor Antibody (Extracellular Domain) - References

Boie Y.,et al.J. Biol. Chem. 270:18910-18916(1995).
Martin A.L.,et al.Submitted (APR-2007) to the EMBL/GenBank/DDBJ databases.
Heilig R.,et al.Nature 421:601-607(2003).
Mural R.J.,et al.Submitted (SEP-2005) to the EMBL/GenBank/DDBJ databases.
Town M.H.,et al.Prostaglandins 25:13-28(1983).