

HTR1F / 5-HT1F Receptor Antibody (C-Terminus)
Rabbit Polyclonal Antibody
Catalog # ALS10646**Specification****HTR1F / 5-HT1F Receptor Antibody (C-Terminus) - Product Information**

Application	IHC-P
Primary Accession	P30939
Reactivity	Human, Mouse, Rabbit, Hamster, Monkey, Chicken, Bovine, Guinea Pig, Dog
Host	Rabbit
Clonality	Polyclonal
Calculated MW	42kDa KDa
Dilution	IHC-P~~N/A

HTR1F / 5-HT1F Receptor Antibody (C-Terminus) - Additional Information**Gene ID** 3355**Other Names**

5-hydroxytryptamine receptor 1F, 5-HT-1F, 5-HT1F, Serotonin receptor 1F, HTR1F, HTR1EL

Target/Specificity

Human 5HT1F Receptor. BLAST analysis of the peptide immunogen showed no homology with other human proteins, except HTR1E (71%), HTR1D (59%), HTR1B (59%).

Reconstitution & Storage

Long term: -70°C; Short term: +4°C

Precautions

HTR1F / 5-HT1F Receptor Antibody (C-Terminus) is for research use only and not for use in diagnostic or therapeutic procedures.

HTR1F / 5-HT1F Receptor Antibody (C-Terminus) - Protein Information**Name** HTR1F ([HGNC:5292](#))**Function**

G-protein coupled receptor for 5-hydroxytryptamine (serotonin) (PubMed:21422162, PubMed:34239069, PubMed:8380639, PubMed:8384716). Also functions as a receptor for various alkaloids and psychoactive substances (PubMed:21422162, PubMed:8380639, PubMed:8384716). Receptor for lasmiditan, a drug for the treatment of acute migraine (PubMed:21422162).

href="http://www.uniprot.org/citations/34239069" target="_blank">34239069). Ligand binding causes a conformation change that triggers signaling via guanine nucleotide-binding proteins (G proteins) and modulates the activity of downstream effectors, such as adenylate cyclase (PubMed:34239069). HTR1F is coupled to G(i)/G(o) G alpha proteins and mediates inhibitory neurotransmission by inhibiting adenylate cyclase activity (PubMed:34239069, PubMed:35610220).

Cellular Location

Cell membrane; Multi-pass membrane protein

Volume

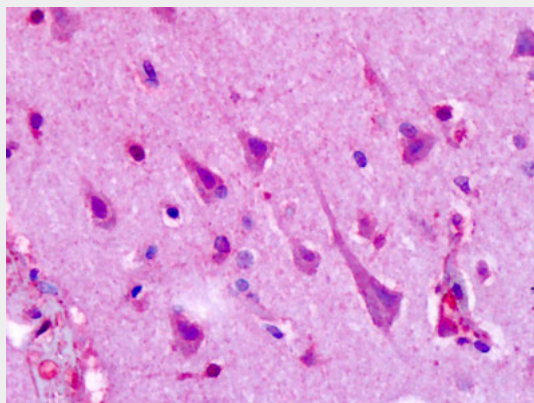
50 µl

HTR1F / 5-HT1F Receptor Antibody (C-Terminus) - Protocols

Provided below are standard protocols that you may find useful for product applications.

- [Western Blot](#)
- [Blocking Peptides](#)
- [Dot Blot](#)
- [Immunohistochemistry](#)
- [Immunofluorescence](#)
- [Immunoprecipitation](#)
- [Flow Cytometry](#)
- [Cell Culture](#)

HTR1F / 5-HT1F Receptor Antibody (C-Terminus) - Images



Anti-HTR1F / 5-HT1F antibody IHC of human brain, cortex, neurons.

HTR1F / 5-HT1F Receptor Antibody (C-Terminus) - Background

G-protein coupled receptor for 5-hydroxytryptamine (serotonin). Also functions as a receptor for various alkaloids and psychoactive substances. Ligand binding causes a conformation change that triggers signaling via guanine nucleotide-binding proteins (G proteins) and modulates the activity of down-stream effectors, such as adenylate cyclase. Signaling inhibits adenylate cyclase activity.

HTR1F / 5-HT1F Receptor Antibody (C-Terminus) - References

Lovenberg T.W.,et al.Proc. Natl. Acad. Sci. U.S.A. 90:2184-2188(1993).
Adham N.,et al.Proc. Natl. Acad. Sci. U.S.A. 90:408-412(1993).
Puhl H.L. III,et al.Submitted (APR-2002) to the EMBL/GenBank/DDBJ databases.
Muzny D.M.,et al.Nature 440:1194-1198(2006).
Nichols D.E.,et al.Chem. Rev. 108:1614-1641(2008).