

**GPR27 Antibody (C-Terminus)**  
**Rabbit Polyclonal Antibody**  
**Catalog # ALS10688**

**Specification**

---

**GPR27 Antibody (C-Terminus) - Product Information**

Application	IHC-P, ICC
Primary Accession	<a href="#">O9NS67</a>
Reactivity	Human, Monkey
Host	Rabbit
Clonality	Polyclonal
Calculated MW	40kDa KDa
Dilution	IHC-P~~N/A ICC~~N/A

**GPR27 Antibody (C-Terminus) - Additional Information**

**Gene ID** 2850

**Other Names**

Probable G-protein coupled receptor 27, Super conserved receptor expressed in brain 1, GPR27, SREB1

**Target/Specificity**

Human GPR27. BLAST analysis of the peptide immunogen showed no homology with other human proteins.

**Reconstitution & Storage**

Long term: -70°C; Short term: +4°C

**Precautions**

GPR27 Antibody (C-Terminus) is for research use only and not for use in diagnostic or therapeutic procedures.

**GPR27 Antibody (C-Terminus) - Protein Information**

**Name** GPR27

**Synonyms** SREB1

**Function**

Orphan receptor. Possible candidate for amine-like G-protein coupled receptor.

**Cellular Location**

Cell membrane; Multi-pass membrane protein

**Tissue Location**

Highly expressed as a 3.0 kb transcript in brain, ovary, testis, heart, prostate and peripheral

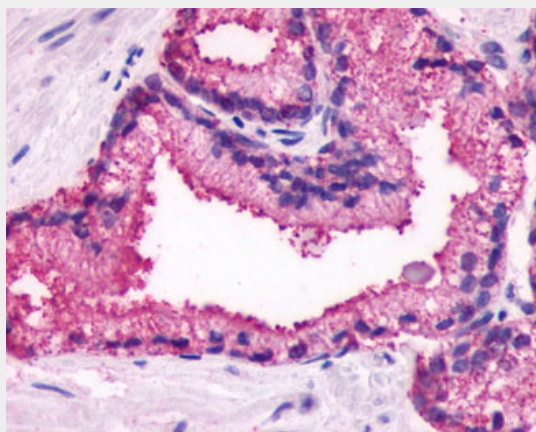
Leukocytes. Lower levels in pancreas and small intestine. A 2.3 kb transcript was also found in peripheral Leukocytes. In brain regions, detected as a 3.0 kb transcript in all regions tested. Highest levels in the caudate nucleus, putamen, hippocampus and subthalamic nucleus. Lowest level in the cerebellum

### **GPR27 Antibody (C-Terminus) - Protocols**

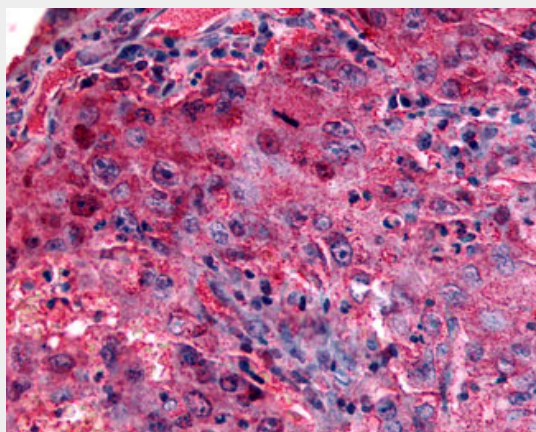
Provided below are standard protocols that you may find useful for product applications.

- [Western Blot](#)
- [Blocking Peptides](#)
- [Dot Blot](#)
- [Immunohistochemistry](#)
- [Immunofluorescence](#)
- [Immunoprecipitation](#)
- [Flow Cytometry](#)
- [Cell Culture](#)

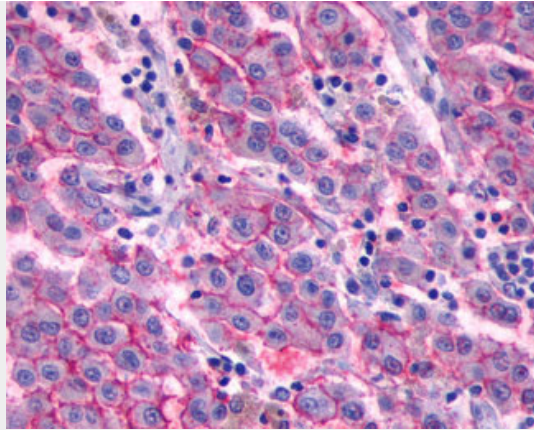
### **GPR27 Antibody (C-Terminus) - Images**



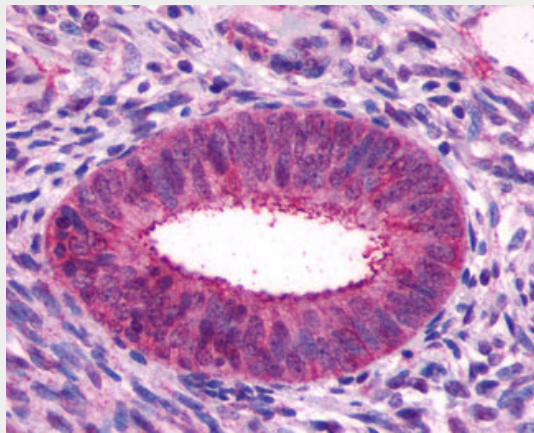
Anti-GPR27 antibody IHC of human prostate.



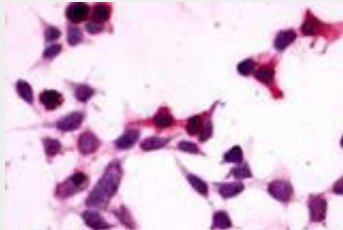
Anti-GPR27 antibody IHC of human Lung, Non-Small Cell Carcinoma.



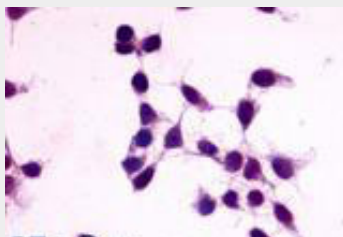
Anti-GPR27 antibody IHC of human Skin, Melanoma.



Anti-GPR27 antibody IHC of human uterus endometrial gland.



Anti-GPR27 antibody ALS10688 immunocytochemistry (ICC) staining of HEK293 human embryonic kidney...



Anti-GPR27 antibody ALS10688 immunocytochemistry (ICC) staining of untransfected HEK293 human...

### **GPR27 Antibody (C-Terminus) - Background**

Orphan receptor. Possible candidate for amine-like G- protein coupled receptor.

**GPR27 Antibody (C-Terminus) - References**

Matsumoto M., et al. *Biochem. Biophys. Res. Commun.* 272:576-582(2000).