

**EDNRA / Endothelin A Receptor Antibody (Extracellular Domain)  
Rabbit Polyclonal Antibody  
Catalog # ALS10727**

**Specification**

---

**EDNRA / Endothelin A Receptor Antibody (Extracellular Domain) - Product Information**

Application	IHC-P
Primary Accession	<a href="#">P25101</a>
Reactivity	Human, Mouse, Rabbit, Pig, Sheep, Horse, Bovine, Dog
Host	Rabbit
Clonality	Polyclonal
Calculated MW	49kDa KDa
Dilution	IHC-P~~N/A

**EDNRA / Endothelin A Receptor Antibody (Extracellular Domain) - Additional Information**

**Gene ID** 1909

**Other Names**

Endothelin-1 receptor, Endothelin A receptor, ET-A, ETA-R, hET-AR, EDNRA, ETA, ETRA

**Target/Specificity**

Human Endothelin A Receptor. BLAST analysis of the peptide immunogen showed no homology with other human proteins.

**Reconstitution & Storage**

Long term: -70°C; Short term: +4°C

**Precautions**

EDNRA / Endothelin A Receptor Antibody (Extracellular Domain) is for research use only and not for use in diagnostic or therapeutic procedures.

**EDNRA / Endothelin A Receptor Antibody (Extracellular Domain) - Protein Information**

**Name** EDNRA ([HGNC:3179](#))

**Synonyms** ETA, ETRA

**Function**

Receptor for endothelin-1. Mediates its action by association with G proteins that activate a phosphatidylinositol-calcium second messenger system. The rank order of binding affinities for ET-A is: ET1 > ET2 >> ET3.

**Cellular Location**

Cell membrane; Multi-pass membrane protein.

**Tissue Location**

Isoform 1, isoform 3 and isoform 4 are expressed in a variety of tissues, with highest levels in the aorta and cerebellum, followed by lung, atrium and cerebral cortex, lower levels in the placenta, kidney, adrenal gland, duodenum, colon, ventricle and liver but no expression in umbilical vein endothelial cells. Within the placenta, isoform 1, isoform 2, isoform 3 and isoform 4 are expressed in the villi and stem villi vessels.

**Volume**

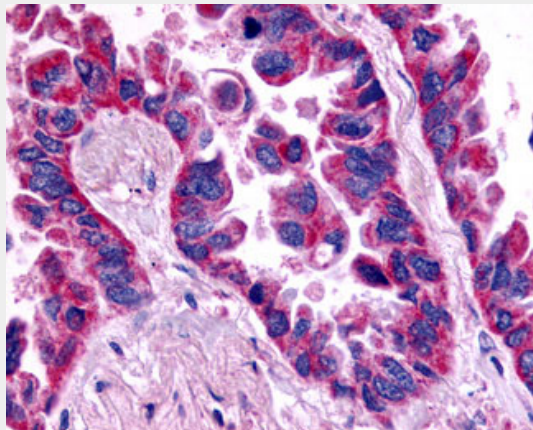
50  $\mu$ l

**EDNRA / Endothelin A Receptor Antibody (Extracellular Domain) - Protocols**

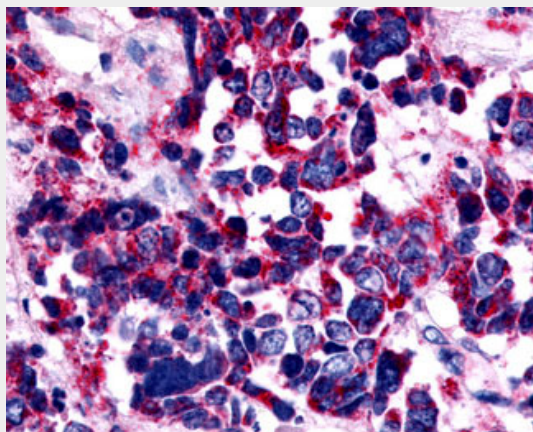
Provided below are standard protocols that you may find useful for product applications.

- [Western Blot](#)
- [Blocking Peptides](#)
- [Dot Blot](#)
- [Immunohistochemistry](#)
- [Immunofluorescence](#)
- [Immunoprecipitation](#)
- [Flow Cytometry](#)
- [Cell Culture](#)

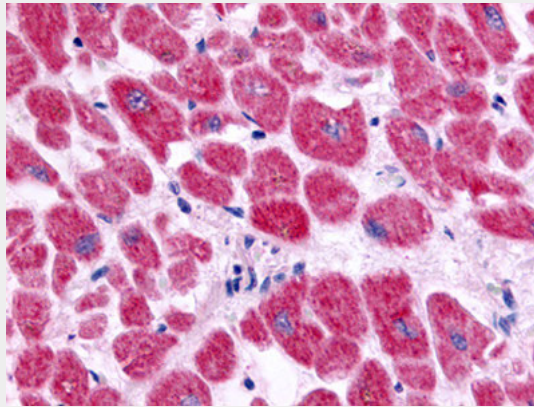
**EDNRA / Endothelin A Receptor Antibody (Extracellular Domain) - Images**



Anti-EDNRA / Endothelin A Receptor antibody IHC of human Lung, Adenocarcinoma.



Anti-EDNRA / Endothelin A Receptor antibody IHC of human Lung, Small Cell Carcinoma.



Anti-Endothelin A Receptor antibody ALS10727 IHC of human heart, cardiac myocytes.

### **EDNRA / Endothelin A Receptor Antibody (Extracellular Domain) - Background**

Receptor for endothelin-1. Mediates its action by association with G proteins that activate a phosphatidylinositol- calcium second messenger system. The rank order of binding affinities for ET-A is: ET1 > ET2 >> ET3.

### **EDNRA / Endothelin A Receptor Antibody (Extracellular Domain) - References**

- Adachi M.,et al.Biochem. Biophys. Res. Commun. 180:1265-1272(1991).
- Cyr C.,et al.Biochem. Biophys. Res. Commun. 181:184-190(1991).
- Hosoda K.,et al.FEBS Lett. 287:23-26(1991).
- Arai H.,et al.Jpn. Circ. J. 56:1303-1307(1992).
- Elshourbagy N.A.,et al.J. Biol. Chem. 268:3873-3879(1993).