

**ESRRA / ERR Alpha Antibody (Internal)**  
**Rabbit Polyclonal Antibody**  
**Catalog # ALS10823****Specification**

---

**ESRRA / ERR Alpha Antibody (Internal) - Product Information**

Application	IHC-P
Primary Accession	<a href="#">P11474</a>
Reactivity	Human, Mouse, Hamster, Monkey, Pig, Horse, Bovine, Dog
Host	Rabbit
Clonality	Polyclonal
Calculated MW	46kDa KDa
Dilution	IHC-P~~N/A

**ESRRA / ERR Alpha Antibody (Internal) - Additional Information****Gene ID** 2101**Other Names**

Steroid hormone receptor ERR1, Estrogen receptor-like 1, Estrogen-related receptor alpha, ERR-alpha, Nuclear receptor subfamily 3 group B member 1, ESRRA, ERR1, ESRL1, NR3B1

**Target/Specificity**

Human ESRRA. BLAST analysis of the peptide immunogen showed no homology with other human proteins.

**Reconstitution & Storage**

Long term: -70°C; Short term: +4°C

**Precautions**

ESRRA / ERR Alpha Antibody (Internal) is for research use only and not for use in diagnostic or therapeutic procedures.

**ESRRA / ERR Alpha Antibody (Internal) - Protein Information****Name** ESRRA**Synonyms** ERR1, ESRL1, NR3B1**Function**

Binds to an ERR-alpha response element (ERRE) containing a single consensus half-site, 5'-TNAAGGTCA-3'. Can bind to the medium-chain acyl coenzyme A dehydrogenase (MCAD) response element NRRE-1 and may act as an important regulator of MCAD promoter. Binds to the C1 region of the lactoferrin gene promoter. Requires dimerization and the coactivator, PGC-1A, for full activity. The ERRalpha/PGC1alpha complex is a regulator of energy metabolism. Induces the expression of PERM1 in the skeletal muscle.

**Cellular Location**

Nucleus {ECO:0000255|PROSITE-ProRule:PRU00407, ECO:0000269|PubMed:18063693, ECO:0000269|PubMed:21190936}. Cytoplasm. Note=Co-localizes to the cytoplasm only in presence of MAPK15.

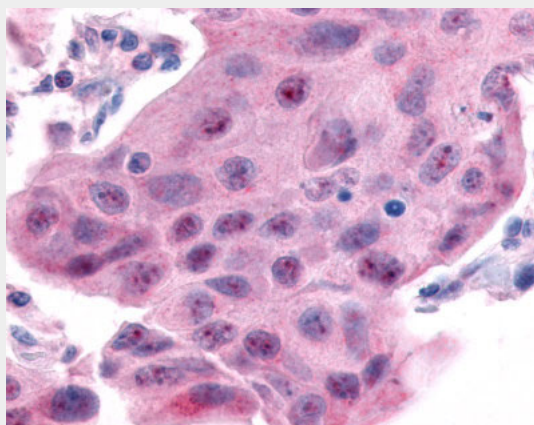
**Volume**

50  $\mu$ l

**ESRRA / ERR Alpha Antibody (Internal) - Protocols**

Provided below are standard protocols that you may find useful for product applications.

- [Western Blot](#)
- [Blocking Peptides](#)
- [Dot Blot](#)
- [Immunohistochemistry](#)
- [Immunofluorescence](#)
- [Immunoprecipitation](#)
- [Flow Cytometry](#)
- [Cell Culture](#)

**ESRRA / ERR Alpha Antibody (Internal) - Images**

Anti-ESRRA antibody ALS10823 IHC of human breast carcinoma.

**ESRRA / ERR Alpha Antibody (Internal) - Background**

Binds to an ERR-alpha response element (ERRE) containing a single consensus half-site, 5'-TNAAGGTCA-3'. Can bind to the medium-chain acyl coenzyme A dehydrogenase (MCAD) response element NRRE-1 and may act as an important regulator of MCAD promoter. Binds to the C1 region of the lactoferrin gene promoter. Requires dimerization and the coactivator, PGC-1A, for full activity. The ERRalpha/PGC1alpha complex is a regulator of energy metabolism. Induces the expression of PERM1 in the skeletal muscle.

**ESRRA / ERR Alpha Antibody (Internal) - References**

Giguere V., et al. Nature 331:91-94(1988).  
Yang N., et al. J. Biol. Chem. 271:5795-5804(1996).  
Taylor T.D., et al. Nature 440:497-500(2006).  
Wiley S.R., et al. Genes Dev. 7:2206-2219(1993).  
Sladek R., et al. Mol. Cell. Biol. 17:5400-5409(1997).

