

RORB / ROR Beta Antibody (Hinge Domain)
Rabbit Polyclonal Antibody
Catalog # ALS10825**Specification**

RORB / ROR Beta Antibody (Hinge Domain) - Product Information

Application	IHC-P
Primary Accession	Q92753
Reactivity	Human, Mouse, Rabbit, Hamster, Monkey, Chicken, Sheep, Horse, Bovine, Dog
Host	Rabbit
Clonality	Polyclonal
Dilution	IHC-P~~N/A

RORB / ROR Beta Antibody (Hinge Domain) - Additional Information**Gene ID** 6096**Other Names**

Nuclear receptor ROR-beta, Nuclear receptor RZR-beta, Nuclear receptor subfamily 1 group F member 2, Retinoid-related orphan receptor-beta, RORB, NR1F2, RZRB

Target/Specificity

Human ROR Beta. BLAST analysis of the peptide immunogen showed no homology with other human proteins.

Reconstitution & Storage

Long term: -70°C; Short term: +4°C

Precautions

RORB / ROR Beta Antibody (Hinge Domain) is for research use only and not for use in diagnostic or therapeutic procedures.

RORB / ROR Beta Antibody (Hinge Domain) - Protein Information**Name** RORB**Synonyms** NR1F2, RZRB**Function**

Nuclear receptor that binds DNA as a monomer to ROR response elements (RORE) containing a single core motif half-site 5'-AGGTCA-3' preceded by a short A-T-rich sequence. Considered to have intrinsic transcriptional activity, have some natural ligands such as all-trans retinoic acid (ATRA) and other retinoids which act as inverse agonists repressing the transcriptional activity. Required for normal postnatal development of rod and cone photoreceptor cells. Modulates rod photoreceptors differentiation at least by inducing the transcription factor NRL-mediated pathway. In cone photoreceptor cells, regulates transcription of OPN1SW. Involved in the regulation of the period length and stability of the circadian rhythm. May control cytoarchitectural patterning of

neocortical neurons during development. May act in a dose-dependent manner to regulate barrel formation upon innervation of layer IV neurons by thalamocortical axons. May play a role in the suppression of osteoblastic differentiation through the inhibition of RUNX2 transcriptional activity (By similarity).

Cellular Location

Nucleus, nucleoplasm

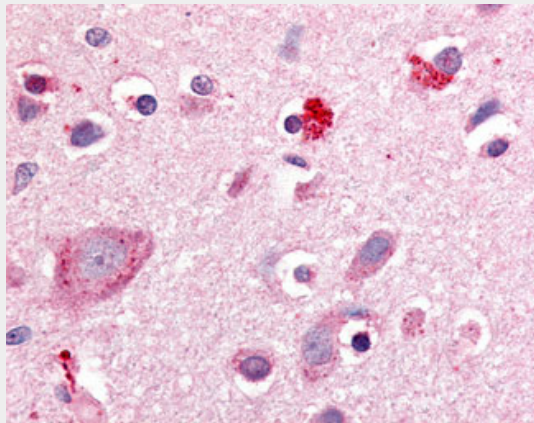
Volume

50 μ l

RORB / ROR Beta Antibody (Hinge Domain) - Protocols

Provided below are standard protocols that you may find useful for product applications.

- [Western Blot](#)
- [Blocking Peptides](#)
- [Dot Blot](#)
- [Immunohistochemistry](#)
- [Immunofluorescence](#)
- [Immunoprecipitation](#)
- [Flow Cytometry](#)
- [Cell Culture](#)

RORB / ROR Beta Antibody (Hinge Domain) - Images

Anti-ROR Beta antibody ALS10825 IHC of human brain, cortex.

RORB / ROR Beta Antibody (Hinge Domain) - Background

#N/A

RORB / ROR Beta Antibody (Hinge Domain) - References

#N/A