

**GPR88 Antibody (Cytoplasmic Domain)**  
**Rabbit Polyclonal Antibody**  
**Catalog # ALS10837****Specification**

---

**GPR88 Antibody (Cytoplasmic Domain) - Product Information**

Application	IHC-P
Primary Accession	<a href="#">O9GZN0</a>
Reactivity	Human, Monkey, Bovine
Host	Rabbit
Clonality	Polyclonal
Calculated MW	40kDa KDa
Dilution	IHC-P~~N/A

**GPR88 Antibody (Cytoplasmic Domain) - Additional Information****Gene ID** 54112**Other Names**

Probable G-protein coupled receptor 88, Striatum-specific G-protein coupled receptor, GPR88, STRG

**Target/Specificity**

Human GPR88. BLAST analysis of the peptide immunogen showed no homology with other human proteins.

**Reconstitution & Storage**

Long term: -70°C; Short term: +4°C

**Precautions**

GPR88 Antibody (Cytoplasmic Domain) is for research use only and not for use in diagnostic or therapeutic procedures.

**GPR88 Antibody (Cytoplasmic Domain) - Protein Information****Name** GPR88**Synonyms** STRG**Function**

Orphan G protein-coupled receptor implicated in a large repertoire of behavioral responses that engage motor activities, spatial learning, and emotional processing (By similarity). May play a role in the regulation of cognitive and motor function (By similarity). Couples with the heterotrimeric G protein complex of the G(i) subfamily, consisting of GNAI1, GNB1 and GNG2, thereby acting through a G(i)-mediated pathway (PubMed:<a href="http://www.uniprot.org/citations/35501348" target="\_blank">35501348</a>). Plays a role in the attenuation of D1 dopamine receptor (D1R)-mediated cAMP response in ciliated cells (PubMed:<a href="http://www.uniprot.org/citations/23936473" target="\_blank">23936473</a>). In

non-ciliated cells, involved in the inhibition of the beta-2 adrenergic receptor (B2AR) response (PubMed:<a href="http://www.uniprot.org/citations/23936473" target="\_blank">23936473</a>).

#### Cellular Location

Cell membrane {ECO:0000250|UniProtKB:Q9ESP4}; Multi-pass membrane protein. Cell projection, cilium membrane; Multi-pass membrane protein. Cytoplasm {ECO:0000250|UniProtKB:Q9ESP4}. Nucleus {ECO:0000250|UniProtKB:Q9ESP4}. Note=Localized to cilia in ciliated cells; whereas in non-ciliated cells, distributed throughout the cell membrane (PubMed:23936473). During cortical lamination, subcellular location shifts, on the day of birth, from expression at the plasma membrane and in the cytoplasm to the nuclei of neurons. This intranuclear localization remains throughout adulthood {ECO:0000250|UniProtKB:Q9ESP4, ECO:0000269|PubMed:23936473}

#### Tissue Location

Expressed predominantly in the striatum.

#### Volume

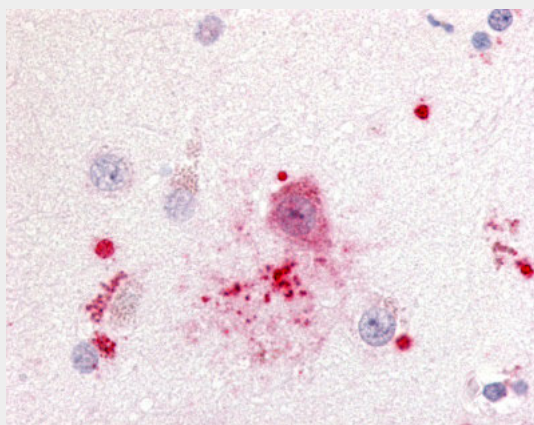
50 µl

### GPR88 Antibody (Cytoplasmic Domain) - Protocols

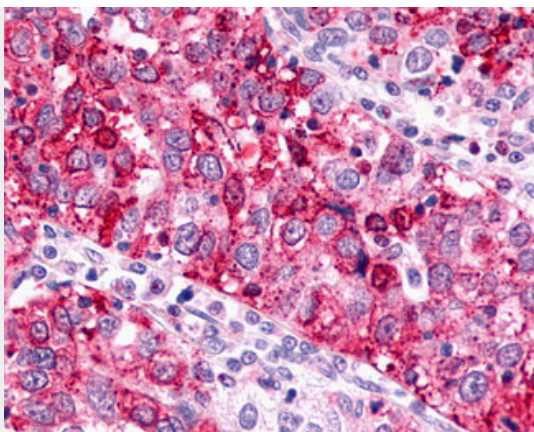
Provided below are standard protocols that you may find useful for product applications.

- [Western Blot](#)
- [Blocking Peptides](#)
- [Dot Blot](#)
- [Immunohistochemistry](#)
- [Immunofluorescence](#)
- [Immunoprecipitation](#)
- [Flow Cytometry](#)
- [Cell Culture](#)

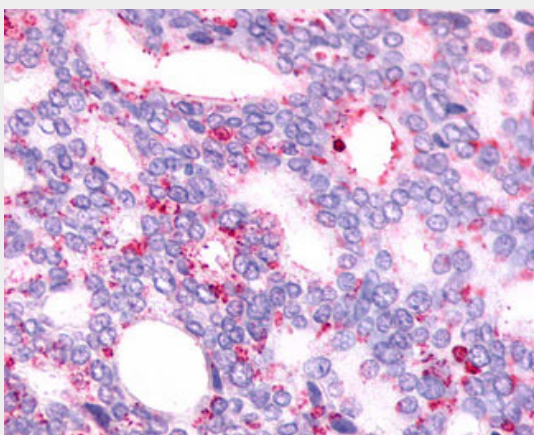
### GPR88 Antibody (Cytoplasmic Domain) - Images



Anti-GPR88 antibody ALS10837 IHC of human brain, neurons and glia.



Anti-GPR88 antibody IHC of human Ovary, Carcinoma.



Anti-GPR88 antibody IHC of human Prostate, Carcinoma.

#### **GPR88 Antibody (Cytoplasmic Domain) - Background**

Orphan receptor.

#### **GPR88 Antibody (Cytoplasmic Domain) - References**

Mizushima K.,et al.Genomics 69:314-321(2000).  
Kopatz S.A.,et al.Submitted (JUL-2003) to the EMBL/GenBank/DDBJ databases.  
Gregory S.G.,et al.Nature 441:315-321(2006).