

**ADGRE3 / EMR3 Antibody (C-Terminus)**  
**Rabbit Polyclonal Antibody**  
**Catalog # ALS10851****Specification**

---

**ADGRE3 / EMR3 Antibody (C-Terminus) - Product Information**

Application	IHC
Primary Accession	<a href="#">Q9BY15</a>
Reactivity	Human, Monkey
Host	Rabbit
Clonality	Polyclonal
Calculated MW	73kDa KDa

**ADGRE3 / EMR3 Antibody (C-Terminus) - Additional Information****Gene ID** 84658**Other Names**

EGF-like module-containing mucin-like hormone receptor-like 3, EGF-like module receptor 3, EGF-like module-containing mucin-like hormone receptor-like 3 subunit alpha, EGF-like module-containing mucin-like hormone receptor-like 3 subunit beta, EMR3

**Target/Specificity**

Human EMR3. BLAST analysis of the peptide immunogen showed no homology with other human proteins.

**Reconstitution & Storage**

Long term: -70°C; Short term: +4°C

**Precautions**

ADGRE3 / EMR3 Antibody (C-Terminus) is for research use only and not for use in diagnostic or therapeutic procedures.

**ADGRE3 / EMR3 Antibody (C-Terminus) - Protein Information****Name** ADGRE3 ([HGNC:23647](#))**Synonyms** EMR3**Function**

Orphan receptor that may play a role myeloid-myeloid interactions during immune and inflammatory responses. A ligand for the soluble form of this receptor is present at the surface of monocytes- derived macrophages and activated neutrophils.

**Cellular Location**

Cell membrane; Multi-pass membrane protein

**Tissue Location**

Displays a predominantly leukocyte-restricted expression, with highest levels in neutrophils, monocytes and macrophages.

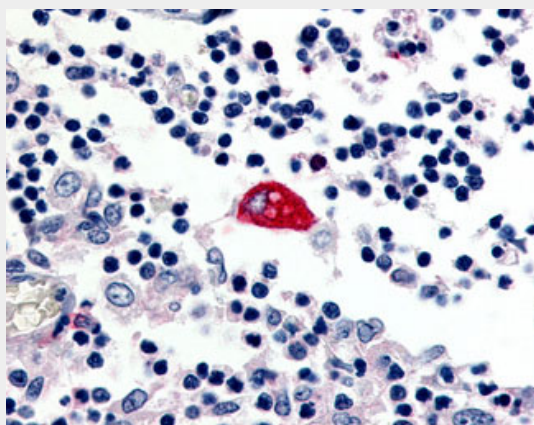
**Volume**

50 µl

**ADGRE3 / EMR3 Antibody (C-Terminus) - Protocols**

Provided below are standard protocols that you may find useful for product applications.

- [Western Blot](#)
- [Blocking Peptides](#)
- [Dot Blot](#)
- [Immunohistochemistry](#)
- [Immunofluorescence](#)
- [Immunoprecipitation](#)
- [Flow Cytometry](#)
- [Cell Culture](#)

**ADGRE3 / EMR3 Antibody (C-Terminus) - Images**

Anti-EMR3 antibody ALS10851 IHC of human macrophage.

**ADGRE3 / EMR3 Antibody (C-Terminus) - Background**

Receptor probably involved in myeloid interactions during immune and inflammatory responses. A ligand for the soluble form of this receptor is present at the surface of monocytes-derived macrophages and activated neutrophils.

**ADGRE3 / EMR3 Antibody (C-Terminus) - References**

Stacey M., et al. J. Biol. Chem. 276:18863-18870(2001).  
Clark H.F., et al. Genome Res. 13:2265-2270(2003).  
Grimwood J., et al. Nature 428:529-535(2004).