

**CRFR1 / CRHR1 Antibody (N-Terminus)**  
**Rabbit Polyclonal Antibody**  
**Catalog # ALS10864****Specification**

---

**CRFR1 / CRHR1 Antibody (N-Terminus) - Product Information**

Application	IHC-P
Primary Accession	<a href="#">P34998</a>
Reactivity	Human, Mouse, Hamster, Monkey
Host	Rabbit
Clonality	Polyclonal
Calculated MW	51kDa KDa
Dilution	IHC-P~~N/A

**CRFR1 / CRHR1 Antibody (N-Terminus) - Additional Information****Gene ID** 1394**Other Names**

Corticotropin-releasing factor receptor 1, CRF-R-1, CRF-R1, CRFR-1, Corticotropin-releasing hormone receptor 1, CRH-R-1, CRH-R1, CRHR1, CRFR, CRFR1, CRHR

**Target/Specificity**

Human CRF1. BLAST analysis of the peptide immunogen showed no homology with other human proteins.

**Reconstitution & Storage**

Long term: -70°C; Short term: +4°C

**Precautions**

CRFR1 / CRHR1 Antibody (N-Terminus) is for research use only and not for use in diagnostic or therapeutic procedures.

**CRFR1 / CRHR1 Antibody (N-Terminus) - Protein Information****Name** CRHR1 ([HGNC:2357](#))**Function**

G-protein coupled receptor for CRH (corticotropin-releasing factor) and UCN (urocortin). Has high affinity for CRH and UCN. Ligand binding causes a conformation change that triggers signaling via guanine nucleotide-binding proteins (G proteins) and down-stream effectors, such as adenylate cyclase. Promotes the activation of adenylate cyclase, leading to increased intracellular cAMP levels. Inhibits the activity of the calcium channel CACNA1H. Required for normal embryonic development of the adrenal gland and for normal hormonal responses to stress. Plays a role in the response to anxiogenic stimuli.

**Cellular Location**

Cell membrane; Multi-pass membrane protein. Endosome. Note=Agonist-binding promotes

endocytosis

**Tissue Location**

Predominantly expressed in the cerebellum, pituitary, cerebral cortex and olfactory lobe

**Volume**

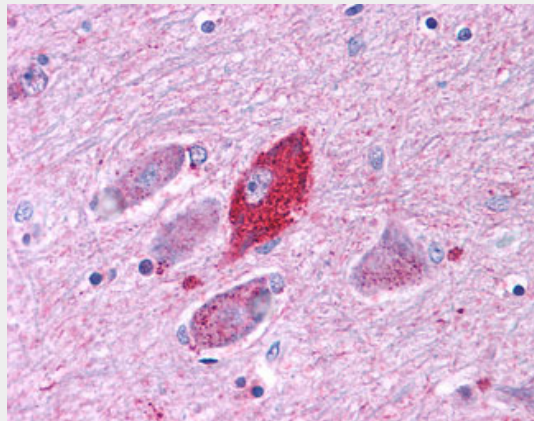
75  $\mu$ l

**CRFR1 / CRHR1 Antibody (N-Terminus) - Protocols**

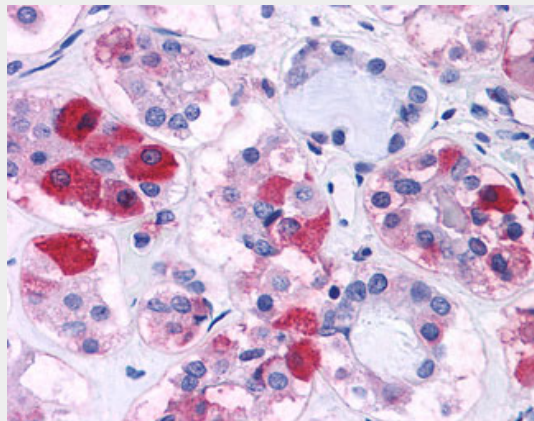
Provided below are standard protocols that you may find useful for product applications.

- [Western Blot](#)
- [Blocking Peptides](#)
- [Dot Blot](#)
- [Immunohistochemistry](#)
- [Immunofluorescence](#)
- [Immunoprecipitation](#)
- [Flow Cytometry](#)
- [Cell Culture](#)

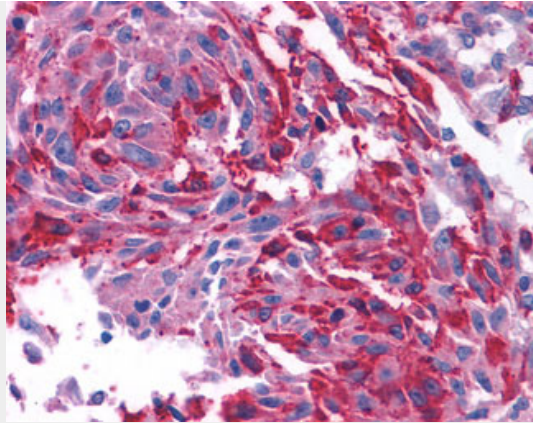
**CRFR1 / CRHR1 Antibody (N-Terminus) - Images**



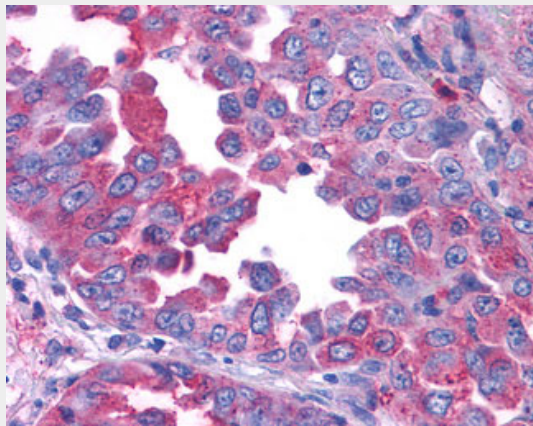
Anti-CRFR1 / CRHR1 antibody IHC of human brain, amygdala.



Anti-CRF1 antibody ALS10864 IHC of human pituitary.



Anti-CRFR1 / CRHR1 antibody IHC of human Skin, Melanoma.



Anti-CRFR1 / CRHR1 antibody IHC of human Lung, Non-Small Cell Carcinoma.

### **CRFR1 / CRHR1 Antibody (N-Terminus) - Background**

G-protein coupled receptor for CRH (corticotropin- releasing factor) and UCN (urocortin). Has high affinity for CRH and UCN. Ligand binding causes a conformation change that triggers signaling via guanine nucleotide-binding proteins (G proteins) and down-stream effectors, such as adenylate cyclase. Promotes the activation of adenylate cyclase, leading to increased intracellular cAMP levels. Inhibits the activity of the calcium channel CACNA1H. Required for normal embryonic development of the adrenal gland and for normal hormonal responses to stress. Plays a role in the response to anxiogenic stimuli.

### **CRFR1 / CRHR1 Antibody (N-Terminus) - References**

- Chen R.,et al.Proc. Natl. Acad. Sci. U.S.A. 90:8967-8971(1993).
- Vita N.,et al.FEBS Lett. 335:1-5(1993).
- Sakai K.,et al.Gene 219:125-130(1998).
- Ross P.C.,et al.Biochem. Biophys. Res. Commun. 205:1836-1842(1994).
- Grammatopoulos D.K.,et al.Mol. Endocrinol. 13:2189-2202(1999).