

GRM2 / MGLUR2 Antibody (N-Terminus)
Rabbit Polyclonal Antibody
Catalog # ALS10869**Specification**

GRM2 / MGLUR2 Antibody (N-Terminus) - Product Information

Application	IHC-P
Primary Accession	Q14416
Reactivity	Human, Rabbit, Monkey
Host	Rabbit
Clonality	Polyclonal
Calculated MW	96kDa KDa
Dilution	IHC-P~~N/A

GRM2 / MGLUR2 Antibody (N-Terminus) - Additional Information**Gene ID** 2912**Other Names**

Metabotropic glutamate receptor 2, mGluR2, GRM2, GPRC1B, MGLUR2

Target/Specificity

Human GRM2 / MGLUR2. BLAST analysis of the peptide immunogen showed no homology with other human proteins, except GRM3 (53%).

Reconstitution & Storage

Long term: -70°C; Short term: +4°C

Precautions

GRM2 / MGLUR2 Antibody (N-Terminus) is for research use only and not for use in diagnostic or therapeutic procedures.

GRM2 / MGLUR2 Antibody (N-Terminus) - Protein Information**Name** GRM2 ([HGNC:4594](#))**Synonyms** GPRC1B, MGLUR2**Function**

Dimeric G protein-coupled receptor which is activated by the excitatory neurotransmitter L-glutamate (PubMed:37286794). Plays critical roles in modulating synaptic transmission and neuronal excitability. Upon activation by glutamate, inhibits presynaptic calcium channels, reducing further glutamate release and dampening excitatory signaling (By similarity). Mechanistically, ligand binding causes a conformation change that triggers signaling via guanine nucleotide-binding proteins (G proteins) and modulates the activity of down-stream effectors, such as adenylate cyclase. May mediate suppression of neurotransmission or may be involved in synaptogenesis or synaptic stabilization.

Cellular Location

Cell membrane; Multi-pass membrane protein. Synapse. Cell projection, dendrite

Tissue Location

Detected in brain cortex (at protein level). Widely expressed in different regions of the adult brain as well as in fetal brain.

Volume

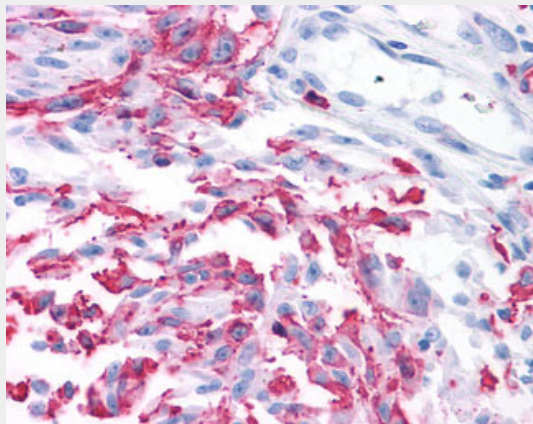
50 μ l

GRM2 / MGLUR2 Antibody (N-Terminus) - Protocols

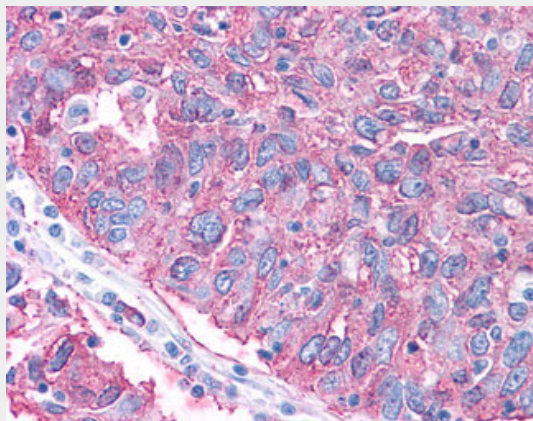
Provided below are standard protocols that you may find useful for product applications.

- [Western Blot](#)
- [Blocking Peptides](#)
- [Dot Blot](#)
- [Immunohistochemistry](#)
- [Immunofluorescence](#)
- [Immunoprecipitation](#)
- [Flow Cytometry](#)
- [Cell Culture](#)

GRM2 / MGLUR2 Antibody (N-Terminus) - Images



Anti-GRM2 / MGLUR2 antibody IHC of human Skin, Melanoma.



Anti-GRM2 / MGLUR2 antibody IHC of human Ovary, Carcinoma.

GRM2 / MGLUR2 Antibody (N-Terminus) - Background

G-protein coupled receptor for glutamate. Ligand binding causes a conformation change that triggers signaling via guanine nucleotide-binding proteins (G proteins) and modulates the activity of down-stream effectors, such as adenylate cyclase. Signaling inhibits adenylate cyclase activity. May mediate suppression of neurotransmission or may be involved in synaptogenesis or synaptic stabilization.

GRM2 / MGLUR2 Antibody (N-Terminus) - References

Flor P.J.,et al.Eur. J. Neurosci. 7:622-629(1995).
Yasuyuki F.,et al.Submitted (JUN-2000) to the EMBL/GenBank/DDBJ databases.
Bonner T.I.,et al.Submitted (APR-2005) to the EMBL/GenBank/DDBJ databases.
Kaighin V.A.,et al.Submitted (DEC-2007) to the EMBL/GenBank/DDBJ databases.
Mural R.J.,et al.Submitted (JUL-2005) to the EMBL/GenBank/DDBJ databases.