

GPCR6 / GPR101 Antibody (Cytoplasmic Domain)
Rabbit Polyclonal Antibody
Catalog # ALS10935

Specification

GPCR6 / GPR101 Antibody (Cytoplasmic Domain) - Product Information

Application	IHC-P
Primary Accession	Q96P66
Reactivity	Human
Host	Rabbit
Clonality	Polyclonal
Calculated MW	57kDa KDa
Dilution	IHC-P~~N/A

GPCR6 / GPR101 Antibody (Cytoplasmic Domain) - Additional Information

Gene ID 83550

Other Names

Probable G-protein coupled receptor 101, GPR101

Target/Specificity

Human GPR101. BLAST analysis of the peptide immunogen showed no homology with other human proteins.

Reconstitution & Storage

Long term: -70°C; Short term: +4°C

Precautions

GPCR6 / GPR101 Antibody (Cytoplasmic Domain) is for research use only and not for use in diagnostic or therapeutic procedures.

GPCR6 / GPR101 Antibody (Cytoplasmic Domain) - Protein Information

Name GPR101

Function

Orphan receptor.

Cellular Location

Cell membrane; Multi-pass membrane protein.

Volume

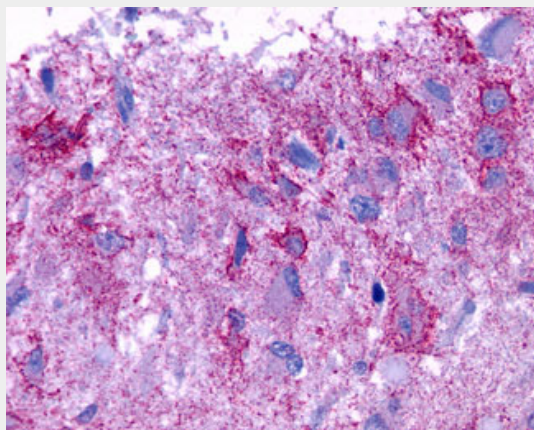
50 µl

GPCR6 / GPR101 Antibody (Cytoplasmic Domain) - Protocols

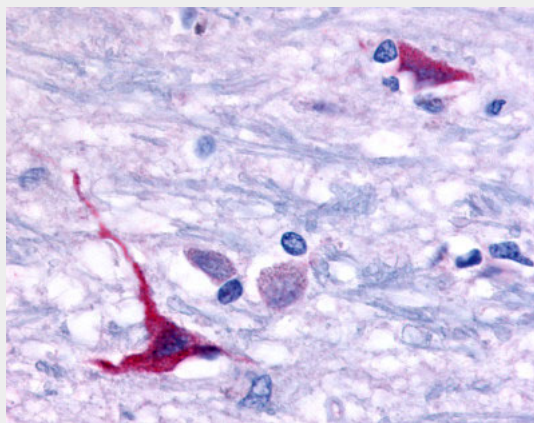
Provided below are standard protocols that you may find useful for product applications.

- [Western Blot](#)
- [Blocking Peptides](#)
- [Dot Blot](#)
- [Immunohistochemistry](#)
- [Immunofluorescence](#)
- [Immunoprecipitation](#)
- [Flow Cytometry](#)
- [Cell Culture](#)

GPCR6 / GPR101 Antibody (Cytoplasmic Domain) - Images



Anti-GPCR6 / GPR101 antibody IHC of human Brain, Glioblastoma.



Anti-GPR101 antibody ALS10935 IHC of human brain, hypothalamus.

GPCR6 / GPR101 Antibody (Cytoplasmic Domain) - Background

Orphan receptor.

GPCR6 / GPR101 Antibody (Cytoplasmic Domain) - References

- Lee D.K.,et al.Gene 275:83-91(2001).
Takeda S.,et al.FEBS Lett. 520:97-101(2002).
Mural R.J.,et al.Submitted (SEP-2005) to the EMBL/GenBank/DDBJ databases.
Suwa M.,et al.Submitted (JUL-2001) to the EMBL/GenBank/DDBJ databases.
Ross M.T.,et al.Nature 434:325-337(2005).

