

**CDCP1 Antibody (Internal)**  
**Rabbit Polyclonal Antibody**  
**Catalog # ALS10984****Specification**

---

**CDCP1 Antibody (Internal) - Product Information**

Application	IHC
Primary Accession	<a href="#">Q9H5V8</a>
Reactivity	Human, Monkey
Host	Rabbit
Clonality	Polyclonal
Calculated MW	93kDa KDa

**CDCP1 Antibody (Internal) - Additional Information****Gene ID** 64866**Other Names**

CUB domain-containing protein 1, Membrane glycoprotein gp140, Subtractive immunization M plus HEp3-associated 135 kDa protein, SIMA135, Transmembrane and associated with src kinases, CD318, CDCP1, TRASK

**Target/Specificity**

Human CDCP1. BLAST analysis of the peptide immunogen showed no homology with other human proteins. Immunogenic peptide is found in isoforms 1, 2, and 3.

**Reconstitution & Storage**

Long term: -70°C; Short term: +4°C

**Precautions**

CDCP1 Antibody (Internal) is for research use only and not for use in diagnostic or therapeutic procedures.

**CDCP1 Antibody (Internal) - Protein Information****Name** CDCP1**Synonyms** TRASK**Function**

May be involved in cell adhesion and cell matrix association. May play a role in the regulation of anchorage versus migration or proliferation versus differentiation via its phosphorylation. May be a novel marker for leukemia diagnosis and for immature hematopoietic stem cell subsets. Belongs to the tetraspanin web involved in tumor progression and metastasis.

**Cellular Location**

[Isoform 1]: Cell membrane; Single-pass membrane protein. Note=Shedding may also lead to a soluble peptide

**Tissue Location**

Highly expressed in mitotic cells with low expression during interphase. Detected at highest levels in skeletal muscle and colon with lower levels in kidney, small intestine, placenta and lung. Up-regulated in a number of human tumor cell lines, as well as in colorectal cancer, breast carcinoma and lung cancer. Also expressed in cells with phenotypes reminiscent of mesenchymal stem cells and neural stem cells.

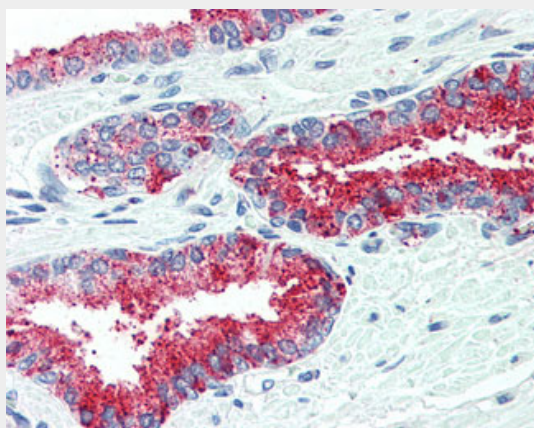
**Volume**

50  $\mu$ l

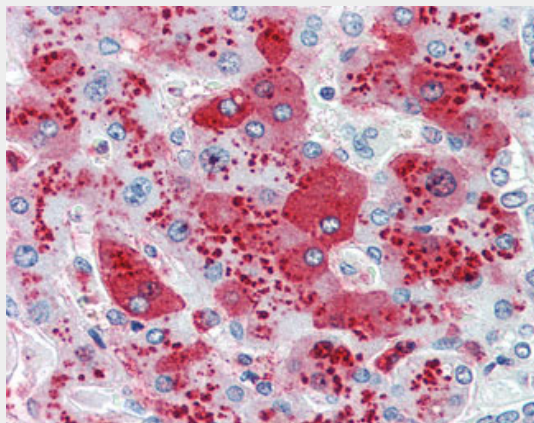
**CDCP1 Antibody (Internal) - Protocols**

Provided below are standard protocols that you may find useful for product applications.

- [Western Blot](#)
- [Blocking Peptides](#)
- [Dot Blot](#)
- [Immunohistochemistry](#)
- [Immunofluorescence](#)
- [Immunoprecipitation](#)
- [Flow Cytometry](#)
- [Cell Culture](#)

**CDCP1 Antibody (Internal) - Images**

Anti-CDCP1 antibody ALS10984 IHC of human prostate.



Anti-CDCP1 antibody ALS10984 IHC of human liver.

#### **CDCP1 Antibody (Internal) - Background**

May be involved in cell adhesion and cell matrix association. May play a role in the regulation of anchorage versus migration or proliferation versus differentiation via its phosphorylation. May be a novel marker for leukemia diagnosis and for immature hematopoietic stem cell subsets. Belongs to the tetraspanin web involved in tumor progression and metastasis.

#### **CDCP1 Antibody (Internal) - References**

Scherl-Mostageer M.,et al.Oncogene 20:4402-4408(2001).  
Hooper J.D.,et al.Oncogene 22:1783-1794(2003).  
Bhatt A.S.,et al.Oncogene 24:5333-5343(2005).  
Clark H.F.,et al.Genome Res. 13:2265-2270(2003).  
Ota T.,et al.Nat. Genet. 36:40-45(2004).