

OLFM4 / Olfactomedin 4 Antibody (Internal)
Rabbit Polyclonal Antibody
Catalog # ALS10985**Specification**

OLFM4 / Olfactomedin 4 Antibody (Internal) - Product Information

| | |
|-------------------|------------------------|
| Application | IHC-P |
| Primary Accession | Q6UX06 |
| Reactivity | Human, Monkey |
| Host | Rabbit |
| Clonality | Polyclonal |
| Calculated MW | 57kDa KDa |
| Dilution | IHC-P~~N/A |

OLFM4 / Olfactomedin 4 Antibody (Internal) - Additional Information**Gene ID** 10562**Other Names**

Olfactomedin-4, OLM4, Antiapoptotic protein GW112, G-CSF-stimulated clone 1 protein, hGC-1, hOLfD, OLFM4, GW112

Target/Specificity

Human OLFM4. BLAST analysis of the peptide immunogen showed no homology with other human proteins.

Reconstitution & Storage

Long term: -70°C; Short term: +4°C

Precautions

OLFM4 / Olfactomedin 4 Antibody (Internal) is for research use only and not for use in diagnostic or therapeutic procedures.

OLFM4 / Olfactomedin 4 Antibody (Internal) - Protein Information**Name** OLFM4**Synonyms** GW112**Function**

May promote proliferation of pancreatic cancer cells by favoring the transition from the S to G2/M phase. In myeloid leukemic cell lines, inhibits cell growth and induces cell differentiation and apoptosis. May play a role in the inhibition of EIF4EBP1 phosphorylation/deactivation. Facilitates cell adhesion, most probably through interaction with cell surface lectins and cadherin.

Cellular Location

Secreted, extracellular space. Mitochondrion. Note=Subcellular location is not clearly defined: has been shown to be secreted (PubMed:16566923), but also in the mitochondrion

(PubMed:15059901, PubMed:20724538), cytoplasm and plasma membrane (PubMed:20724538) and in the nucleus (PubMed:15059901)

Tissue Location

Expressed during myeloid lineage development. Much higher expression in bone marrow neutrophils than in peripheral blood neutrophils (at protein level). Strongly expressed in the prostate, small intestine and colon and moderately expressed in the bone marrow and stomach. Overexpressed in some pancreatic cancer tissues

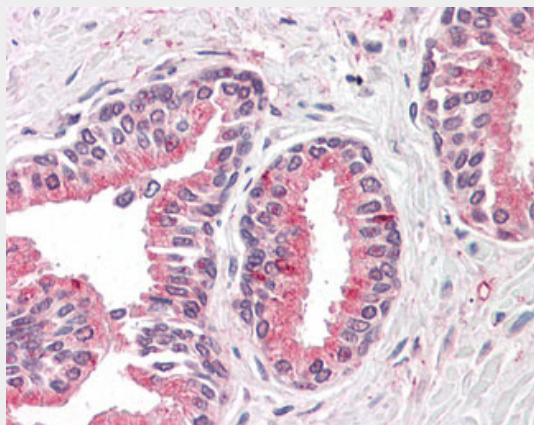
Volume

50 µl

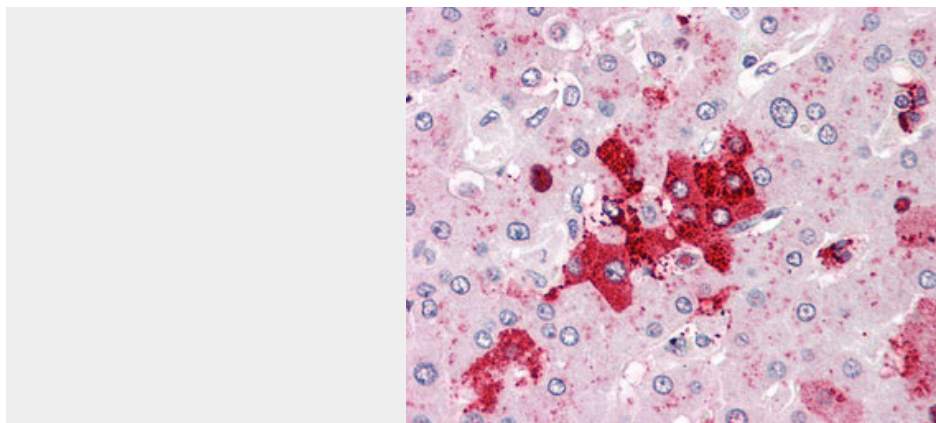
OLFM4 / Olfactomedin 4 Antibody (Internal) - Protocols

Provided below are standard protocols that you may find useful for product applications.

- [Western Blot](#)
- [Blocking Peptides](#)
- [Dot Blot](#)
- [Immunohistochemistry](#)
- [Immunofluorescence](#)
- [Immunoprecipitation](#)
- [Flow Cytometry](#)
- [Cell Culture](#)

OLFM4 / Olfactomedin 4 Antibody (Internal) - Images

Anti-OLFM4 antibody ALS10985 IHC of human prostate.



Anti-OLFM4 antibody ALS10985 IHC of human liver.

OLFM4 / Olfactomedin 4 Antibody (Internal) - Background

May promote proliferation of pancreatic cancer cells by favoring the transition from the S to G2/M phase. In myeloid leukemic cell lines, inhibits cell growth and induces cell differentiation and apoptosis. May play a role in the inhibition of EIF4EBP1 phosphorylation/deactivation. Facilitates cell adhesion, most probably through interaction with cell surface lectins and cadherin.

OLFM4 / Olfactomedin 4 Antibody (Internal) - References

- Clark H.F.,et al.Genome Res. 13:2265-2270(2003).
Dunham A.,et al.Nature 428:522-528(2004).
Mural R.J.,et al.Submitted (JUL-2005) to the EMBL/GenBank/DDBJ databases.
Zhang J.,et al.Gene 283:83-93(2002).
Zhang X.,et al.Cancer Res. 64:2474-2481(2004).