

VRL1 / TRPV2 Antibody (Internal)
Rabbit Polyclonal Antibody
Catalog # ALS11008**Specification**

VRL1 / TRPV2 Antibody (Internal) - Product Information

Application	IHC
Primary Accession	Q9Y5S1
Reactivity	Human
Host	Rabbit
Clonality	Polyclonal
Calculated MW	86kDa KDa

VRL1 / TRPV2 Antibody (Internal) - Additional Information**Gene ID** 51393**Other Names**

Transient receptor potential cation channel subfamily V member 2, TrpV2, Osm-9-like TRP channel 2, OTRPC2, Vanilloid receptor-like protein 1, VRL-1, TRPV2, VRL

Target/Specificity

Human TRPV2. BLAST analysis of the peptide immunogen showed no homology with other human proteins.

Reconstitution & Storage

Long term: -70°C; Short term: +4°C

Precautions

VRL1 / TRPV2 Antibody (Internal) is for research use only and not for use in diagnostic or therapeutic procedures.

VRL1 / TRPV2 Antibody (Internal) - Protein Information**Name** TRPV2**Synonyms** VRL**Function**

Calcium-permeable, non-selective cation channel with an outward rectification. Seems to be regulated, at least in part, by IGF1, PDGF and neuropeptide head activator. May transduce physical stimuli in mast cells. Activated by temperatures higher than 52 degrees Celsius; is not activated by vanilloids and acidic pH.

Cellular Location

Cell membrane {ECO:0000250|UniProtKB:Q9WTR1}; Multi-pass membrane protein. Cytoplasm {ECO:0000250|UniProtKB:Q9WTR1}. Melanosome. Note=Translocates from the cytoplasm to the plasma membrane upon ligand stimulation (By similarity). Identified by mass spectrometry in

melanosome fractions from stage I to stage IV {ECO:0000250|UniProtKB:Q9WTR1}

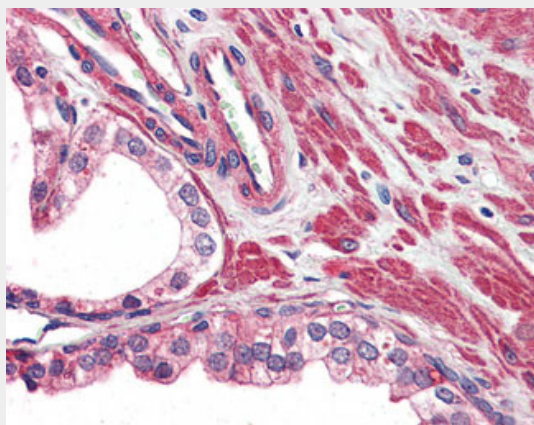
Volume

50 µl

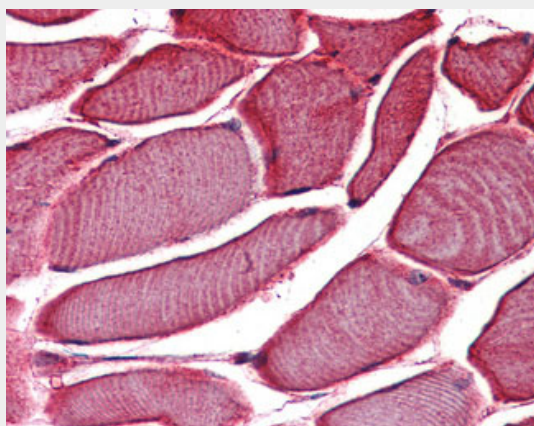
VRL1 / TRPV2 Antibody (Internal) - Protocols

Provided below are standard protocols that you may find useful for product applications.

- [Western Blot](#)
- [Blocking Peptides](#)
- [Dot Blot](#)
- [Immunohistochemistry](#)
- [Immunofluorescence](#)
- [Immunoprecipitation](#)
- [Flow Cytometry](#)
- [Cell Culture](#)

VRL1 / TRPV2 Antibody (Internal) - Images

Anti-TRPV2 antibody ALS11008 IHC of human prostate.



Anti-TRPV2 antibody ALS11008 IHC of human skeletal muscle.

VRL1 / TRPV2 Antibody (Internal) - Background

Calcium-permeable, non-selective cation channel with an outward rectification. Seems to be

regulated, at least in part, by IGF-I, PDGF and neuropeptide head activator. May transduce physical stimuli in mast cells. Activated by temperatures higher than 52 degrees Celsius; is not activated by vanilloids and acidic pH.

VRL1 / TRPV2 Antibody (Internal) - References

Caterina M.J., et al. Nature 398:436-441(1999).

Garcia R.L., et al. Submitted (NOV-1998) to the EMBL/GenBank/DDBJ databases.

Kelsell R.E., et al. Submitted (MAY-2002) to the EMBL/GenBank/DDBJ databases.

Ota T., et al. Nat. Genet. 36:40-45(2004).

Zody M.C., et al. Nature 440:1045-1049(2006).