

TMEM33 Antibody (Internal)
Rabbit Polyclonal Antibody
Catalog # ALS11014**Specification**

TMEM33 Antibody (Internal) - Product Information

Application	IHC
Primary Accession	P57088
Reactivity	Human, Monkey, Pig, Horse, Bovine, Dog
Host	Rabbit
Clonality	Polyclonal
Calculated MW	28kDa KDa

TMEM33 Antibody (Internal) - Additional Information**Gene ID** 55161**Other Names**

Transmembrane protein 33, Protein DB83, TMEM33, DB83

Target/Specificity

Human TMEM33. BLAST analysis of the peptide immunogen showed no homology with other human proteins.

Reconstitution & Storage

Short term 4°C, long term aliquot and store at -20°C, avoid freeze thaw cycles.

Precautions

TMEM33 Antibody (Internal) is for research use only and not for use in diagnostic or therapeutic procedures.

TMEM33 Antibody (Internal) - Protein Information**Name** TMEM33**Synonyms** DB83**Function**

Acts as a regulator of the tubular endoplasmic reticulum (ER) network by modulating intracellular calcium homeostasis. Mechanistically, stimulates PKD2 calcium-dependent activity (By similarity). Suppresses the RTN3/4-induced formation of the ER tubules (PubMed: [25612671](http://www.uniprot.org/citations/25612671)). Positively regulates PERK-mediated and IRE1-mediated unfolded protein response signaling (PubMed: [26268696](http://www.uniprot.org/citations/26268696)). Plays an essential role in VEGF-mediated release of Ca(2+) from ER stores during angiogenesis (PubMed: [30760708](http://www.uniprot.org/citations/30760708)). Also plays a role in the modulation of innate immune signaling through the cGAS-STING pathway by interacting with RNF26 (PubMed: [32614325](http://www.uniprot.org/citations/32614325))

target="_blank">32614325). Participates in lipid metabolism by acting as a downstream effector of the pyruvate kinase/PKM. Forms a complex with RNF5 to facilitate polyubiquitination and subsequent degradation of SCAP on the ER membrane (PubMed:34487377).

Cellular Location

Endoplasmic reticulum membrane; Multi-pass membrane protein. Melanosome. Nucleus envelope. Note=Identified by mass spectrometry in melanosome fractions from stage I to stage IV. Co-localizes with RTN4 at the ER sheets.

Tissue Location

Prostate cancer and several cancer cell lines (at protein level). Widely expressed. Expressed at higher levels in endocrine-resistant breast cancer cells as compared to endocrine-sensitive breast cancer cells. Expressed at higher levels in early recurrence breast cancer tissues as compared to non-recurrent breast tumors.

Volume

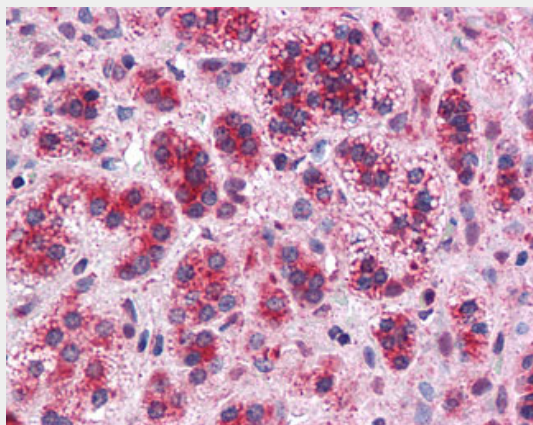
50 µl

TMEM33 Antibody (Internal) - Protocols

Provided below are standard protocols that you may find useful for product applications.

- [Western Blot](#)
- [Blocking Peptides](#)
- [Dot Blot](#)
- [Immunohistochemistry](#)
- [Immunofluorescence](#)
- [Immunoprecipitation](#)
- [Flow Cytometry](#)
- [Cell Culture](#)

TMEM33 Antibody (Internal) - Images



Anti-TMEM33 antibody ALS11014 IHC of human adrenal.

TMEM33 Antibody (Internal) - References

Ota T., et al. Nat. Genet. 36:40-45(2004).
Ebert L., et al. Submitted (JUN-2004) to the EMBL/GenBank/DDBJ databases.
Mural R.J., et al. Submitted (JUL-2005) to the EMBL/GenBank/DDBJ databases.

Chi A.,et al.J. Proteome Res. 5:3135-3144(2006).
Burkard T.R.,et al.BMC Syst. Biol. 5:17-17(2011).