

**WNT6 Antibody (Internal)**  
**Rabbit Polyclonal Antibody**  
**Catalog # ALS11066****Specification**

---

**WNT6 Antibody (Internal) - Product Information**

Application	IHC-P
Primary Accession	<a href="#">O9Y6F9</a>
Reactivity	Human, Rabbit, Horse, Bovine, Dog
Host	Rabbit
Clonality	Polyclonal
Calculated MW	40kDa KDa
Dilution	IHC-P~~N/A

**WNT6 Antibody (Internal) - Additional Information****Gene ID** 7475**Other Names**

Protein Wnt-6, WNT6

**Target/Specificity**

Human WNT6. BLAST analysis of the peptide immunogen showed no homology with other human proteins.

**Reconstitution & Storage**

Long term: -70°C; Short term: +4°C

**Precautions**

WNT6 Antibody (Internal) is for research use only and not for use in diagnostic or therapeutic procedures.

**WNT6 Antibody (Internal) - Protein Information****Name** WNT6**Function**

Ligand for members of the frizzled family of seven transmembrane receptors. Probable developmental protein. May be a signaling molecule which affects the development of discrete regions of tissues. Is likely to signal over only few cell diameters. Together with CAV1 may promote chemoresistance of gastric cancer cells to DNA- damaging anthracycline drugs through the activation of the canonical Wnt receptor signaling pathway.

**Cellular Location**

Secreted, extracellular space, extracellular matrix

**Tissue Location**

Expressed in gastric cancer cell lines and gastric cancer tissues (at protein level). Detected in the

apical gland region of the gastric foveolar epithelium (at protein level)

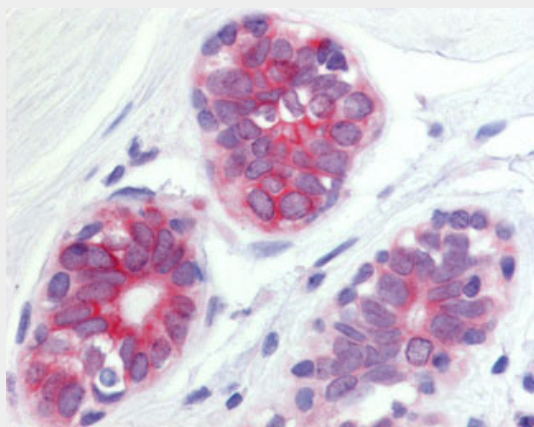
**Volume**  
50 µl

### **WNT6 Antibody (Internal) - Protocols**

Provided below are standard protocols that you may find useful for product applications.

- [Western Blot](#)
- [Blocking Peptides](#)
- [Dot Blot](#)
- [Immunohistochemistry](#)
- [Immunofluorescence](#)
- [Immunoprecipitation](#)
- [Flow Cytometry](#)
- [Cell Culture](#)

### **WNT6 Antibody (Internal) - Images**



Anti-WNT6 antibody ALS11066 IHC of human breast, epithelium cells.

### **WNT6 Antibody (Internal) - Background**

Ligand for members of the frizzled family of seven transmembrane receptors. Probable developmental protein. May be a signaling molecule which affects the development of discrete regions of tissues. Is likely to signal over only few cell diameters. Together with CAV1 may promote chemoresistance of gastric cancer cells to DNA-damaging anthracycline drugs through the activation of the canonical Wnt receptor signaling pathway.

### **WNT6 Antibody (Internal) - References**

Testa T.T., et al. Submitted (AUG-2000) to the EMBL/GenBank/DDBJ databases.  
Kirikoshi H., et al. Biochem. Biophys. Res. Commun. 283:798-805(2001).  
Kalnina N., et al. Submitted (MAY-2003) to the EMBL/GenBank/DDBJ databases.  
Rump A., et al. Submitted (OCT-2000) to the EMBL/GenBank/DDBJ databases.  
Rankin J., et al. Cytogenet. Cell Genet. 84:50-52(1999).