

**STEAP2 Antibody (Internal)**  
**Rabbit Polyclonal Antibody**  
**Catalog # ALS11074****Specification**

---

**STEAP2 Antibody (Internal) - Product Information**

Application	IHC-P
Primary Accession	<a href="#">Q8NFT2</a>
Reactivity	Human, Mouse, Rabbit, Hamster, Monkey, Horse, Guinea Pig, Dog
Host	Rabbit
Clonality	Polyclonal
Calculated MW	56kDa KDa
Dilution	IHC-P~~N/A

**STEAP2 Antibody (Internal) - Additional Information****Gene ID** 261729**Other Names**

Metalloreductase STEAP2, 1.16.1.-, Prostate cancer-associated protein 1, Protein up-regulated in metastatic prostate cancer, PUMPCn, Six-transmembrane epithelial antigen of prostate 2, SixTransMembrane protein of prostate 1, STEAP2, PCANAP1, STAMP1

**Target/Specificity**

Human STEAP2. BLAST analysis of the peptide immunogen showed no homology with other human proteins.

**Reconstitution & Storage**

Long term: -70°C; Short term: +4°C

**Precautions**

STEAP2 Antibody (Internal) is for research use only and not for use in diagnostic or therapeutic procedures.

**STEAP2 Antibody (Internal) - Protein Information****Name** STEAP2**Synonyms** PCANAP1, STAMP1**Function**

Integral membrane protein that functions as a NADPH-dependent ferric-chelate reductase, using NADPH from one side of the membrane to reduce a Fe(3+) chelate that is bound on the other side of the membrane (By similarity). Mediates sequential transmembrane electron transfer from NADPH to FAD and onto heme, and finally to the Fe(3+) chelate (By similarity). Can also reduce Cu(2+) to Cu(1+) (By similarity).

**Cellular Location**

Endosome membrane {ECO:0000250|UniProtKB:Q8BWB6}; Multi-pass membrane protein. Cell membrane; Multi-pass membrane protein

**Tissue Location**

Expressed at high levels in prostate and at significantly lower levels in heart, brain, kidney, pancreas, and ovary.

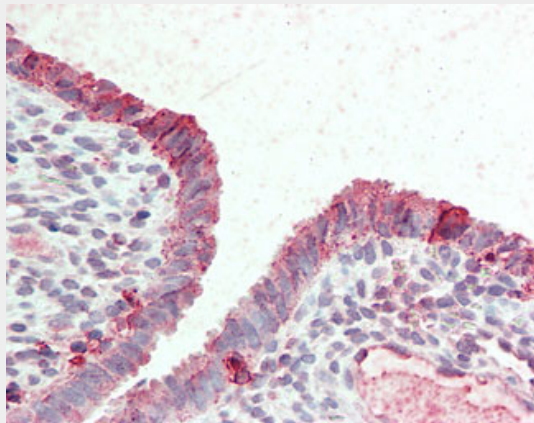
**Volume**

50  $\mu$ l

**STEAP2 Antibody (Internal) - Protocols**

Provided below are standard protocols that you may find useful for product applications.

- [Western Blot](#)
- [Blocking Peptides](#)
- [Dot Blot](#)
- [Immunohistochemistry](#)
- [Immunofluorescence](#)
- [Immunoprecipitation](#)
- [Flow Cytometry](#)
- [Cell Culture](#)

**STEAP2 Antibody (Internal) - Images**

Anti-STEAP2 antibody ALS11074 IHC of human uterus.

**STEAP2 Antibody (Internal) - Background**

Metalloreductase that has the ability to reduce both Fe(3+) to Fe(2+) and Cu(2+) to Cu(1+). Uses NAD(+) as acceptor (By similarity).

**STEAP2 Antibody (Internal) - References**

Korkmaz K.S.,et al.J. Biol. Chem. 277:36689-36696(2002).  
Porkka K.P.,et al.Lab. Invest. 82:1573-1582(2002).  
Zhang Z.,et al.Submitted (JUL-2002) to the EMBL/GenBank/DDBJ databases.  
Clark H.F.,et al.Genome Res. 13:2265-2270(2003).  
Hillier L.W.,et al.Nature 424:157-164(2003).