

SLC7A2 Antibody (C-Terminus)
Rabbit Polyclonal Antibody
Catalog # ALS11088**Specification**

SLC7A2 Antibody (C-Terminus) - Product Information

Application	IHC
Primary Accession	P52569
Reactivity	Human
Host	Rabbit
Clonality	Polyclonal
Calculated MW	72kDa KDa

SLC7A2 Antibody (C-Terminus) - Additional Information**Gene ID** 6542**Other Names**

Cationic amino acid transporter 2, CAT-2, CAT2, Low affinity cationic amino acid transporter 2, Solute carrier family 7 member 2, SLC7A2, ATRC2, CAT2

Target/Specificity

Human SLC7A2. BLAST analysis of the peptide immunogen showed no homology with other human proteins.

Reconstitution & Storage

Long term: -70°C; Short term: +4°C

Precautions

SLC7A2 Antibody (C-Terminus) is for research use only and not for use in diagnostic or therapeutic procedures.

SLC7A2 Antibody (C-Terminus) - Protein Information**Name** SLC7A2 ([HGNC:11060](#))**Function**

Functions as a permease involved in the transport of the cationic amino acids (L-arginine, L-lysine, L-ornithine and L-homoarginine); the affinity for its substrates differs between isoforms created by alternative splicing (PubMed: <http://www.uniprot.org/citations/9174363> target="_blank">9174363, PubMed: <http://www.uniprot.org/citations/28684763> target="_blank">28684763). May play a role in classical or alternative activation of macrophages via its role in arginine transport (By similarity).

Cellular Location

Cell membrane; Multi-pass membrane protein

Tissue Location

Expressed at high levels in the skeletal muscle, placenta and ovary. Expressed at intermediate levels in the liver and pancreas and at low levels in the kidney and heart

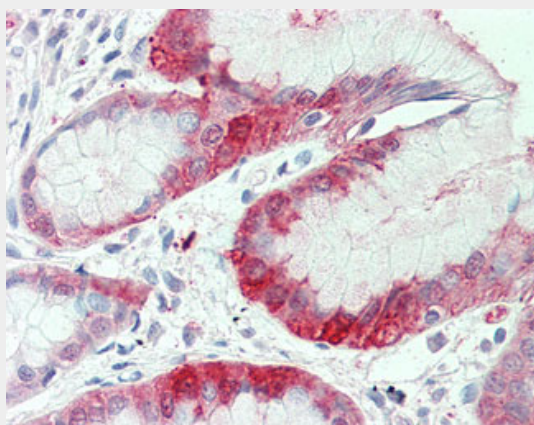
Volume

50 μ l

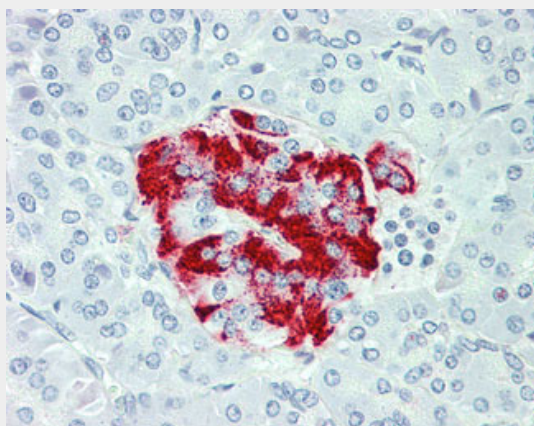
SLC7A2 Antibody (C-Terminus) - Protocols

Provided below are standard protocols that you may find useful for product applications.

- [Western Blot](#)
- [Blocking Peptides](#)
- [Dot Blot](#)
- [Immunohistochemistry](#)
- [Immunofluorescence](#)
- [Immunoprecipitation](#)
- [Flow Cytometry](#)
- [Cell Culture](#)

SLC7A2 Antibody (C-Terminus) - Images

Anti-SLC7A2 antibody ALS11088 IHC of human stomach.



Anti-SLC7A2 antibody ALS11088 IHC of human pancreas.

SLC7A2 Antibody (C-Terminus) - Background

Functions as permease involved in the transport of the cationic amino acids (arginine, lysine and ornithine); the affinity for its substrates differs between isoforms created by alternative splicing. Isoform 1 functions as permease that mediates the transport of the cationic amino acids (arginine, lysine and ornithine), and it has much higher affinity for arginine than isoform 2. Isoform 2 functions as low-affinity, high capacity permease involved in the transport of the cationic amino acids (arginine, lysine and ornithine) (PubMed:9174363). May play a role in classical or alternative activation of macrophages via its role in arginine transport.

SLC7A2 Antibody (C-Terminus) - References

Hoshida R.,et al.Genomics 38:174-178(1996).
Closs E.I.,et al.Biochemistry 36:6462-6468(1997).
Nusbaum C.,et al.Nature 439:331-335(2006).
Mural R.J.,et al.Submitted (SEP-2005) to the EMBL/GenBank/DDBJ databases.
Bechtel S.,et al.BMC Genomics 8:399-399(2007).