

CDHR5 / MUCDHL Antibody (Cytoplasmic Domain)
Rabbit Polyclonal Antibody
Catalog # ALS11118**Specification**

CDHR5 / MUCDHL Antibody (Cytoplasmic Domain) - Product Information

Application	IHC-P
Primary Accession	Q9HBB8
Reactivity	Human, Rabbit, Monkey, Pig, Bovine
Host	Rabbit
Clonality	Polyclonal
Calculated MW	88kDa KDa
Dilution	IHC-P~~N/A

CDHR5 / MUCDHL Antibody (Cytoplasmic Domain) - Additional Information**Gene ID** 53841**Other Names**

Cadherin-related family member 5, Mu-protocadherin, Mucin and cadherin-like protein, CDHR5, MUCDHL, MUPCDH

Target/Specificity

Human CDHR5 / MUPCDH. BLAST analysis of the peptide immunogen showed no homology with other human proteins.

Reconstitution & Storage

Long term: -70°C; Short term: +4°C

Precautions

CDHR5 / MUCDHL Antibody (Cytoplasmic Domain) is for research use only and not for use in diagnostic or therapeutic procedures.

CDHR5 / MUCDHL Antibody (Cytoplasmic Domain) - Protein Information**Name** CDHR5 ([HGNC:7521](#))**Function**

Intermicrovillar adhesion molecule that forms, via its extracellular domain, calcium-dependent heterophilic complexes with CDHR2 on adjacent microvilli. Thereby, controls the packing of microvilli at the apical membrane of epithelial cells. Through its cytoplasmic domain, interacts with microvillus cytoplasmic proteins to form the intermicrovillar adhesion complex/IMAC. This complex plays a central role in microvilli and epithelial brush border differentiation.

Cellular Location

Apical cell membrane; Single-pass type I membrane protein. Cell projection, microvillus membrane; Single-pass type I membrane protein

Tissue Location

Highest expression in kidney, liver, colon and small intestine. In kidney, expressed apically along brush border of proximal convoluted tubule but not in cortical collecting ducts Isoform 1 is expressed primarily in adult small intestine and colon Isoform 2 is highly expressed in fetal liver (PubMed:12167596) Expressed in duodenum with higher expression in enterocytes along the villus axis and lower expression in crypts (at protein level) (PubMed:24725409).

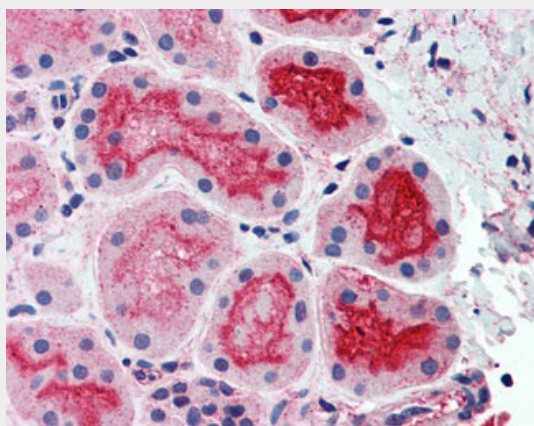
Volume

50 µl

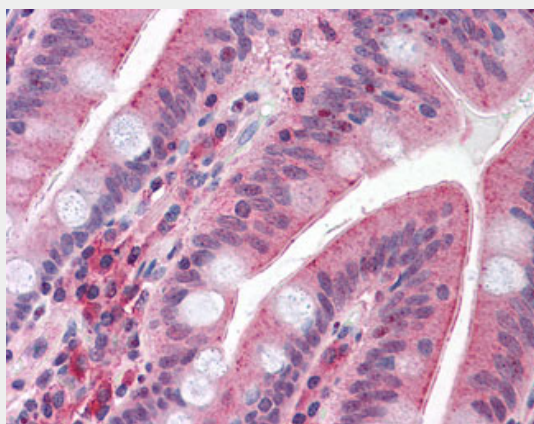
CDHR5 / MUCDHL Antibody (Cytoplasmic Domain) - Protocols

Provided below are standard protocols that you may find useful for product applications.

- [Western Blot](#)
- [Blocking Peptides](#)
- [Dot Blot](#)
- [Immunohistochemistry](#)
- [Immunofluorescence](#)
- [Immunoprecipitation](#)
- [Flow Cytometry](#)
- [Cell Culture](#)

CDHR5 / MUCDHL Antibody (Cytoplasmic Domain) - Images

Anti-CDHR5 / MUCDHL antibody ALS11118 IHC of human kidney.



Anti-CDHR5 / MUPCDH antibody ALS11118 IHC of human small intestine.

CDHR5 / MUCDHL Antibody (Cytoplasmic Domain) - Background

Acts as a calcium-dependent cell adhesion protein.

CDHR5 / MUCDHL Antibody (Cytoplasmic Domain) - References

Paris M.J.,et al.Genomics 69:196-202(2000).

Soleiman A.,et al.Submitted (AUG-2000) to the EMBL/GenBank/DDBJ databases.

Clark H.F.,et al.Genome Res. 13:2265-2270(2003).

Ota T.,et al.Nat. Genet. 36:40-45(2004).

Taylor T.D.,et al.Nature 440:497-500(2006).