

TFF2 / SP Antibody (Internal)
Rabbit Polyclonal Antibody
Catalog # ALS11171**Specification**

TFF2 / SP Antibody (Internal) - Product Information

Application	IHC
Primary Accession	Q03403
Reactivity	Human
Host	Rabbit
Clonality	Polyclonal
Calculated MW	14kDa KDa

TFF2 / SP Antibody (Internal) - Additional Information**Gene ID** 7032**Other Names**

Trefoil factor 2, Spasmolysin, Spasmolytic polypeptide, SP, TFF2, SML1

Target/Specificity

Human TFF2. BLAST analysis of the peptide immunogen showed no homology with other human proteins.

Reconstitution & Storage

Long term: -70°C; Short term: +4°C

Precautions

TFF2 / SP Antibody (Internal) is for research use only and not for use in diagnostic or therapeutic procedures.

TFF2 / SP Antibody (Internal) - Protein Information**Name** TFF2**Synonyms** SML1**Function**

Inhibits gastrointestinal motility and gastric acid secretion. Could function as a structural component of gastric mucus, possibly by stabilizing glycoproteins in the mucus gel through interactions with carbohydrate side chains (By similarity).

Cellular Location

Secreted.

Tissue Location

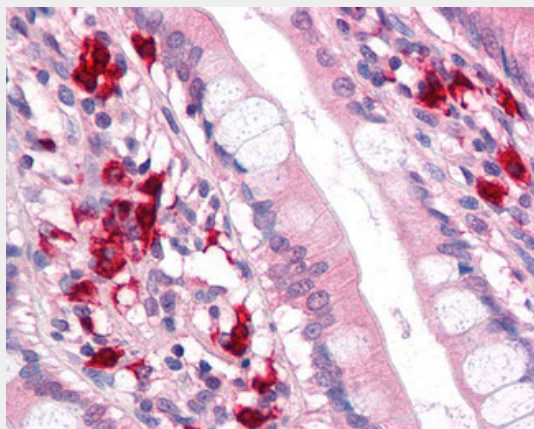
Stomach.

TFF2 / SP Antibody (Internal) - Protocols

Provided below are standard protocols that you may find useful for product applications.

- [Western Blot](#)
- [Blocking Peptides](#)
- [Dot Blot](#)
- [Immunohistochemistry](#)
- [Immunofluorescence](#)
- [Immunoprecipitation](#)
- [Flow Cytometry](#)
- [Cell Culture](#)

TFF2 / SP Antibody (Internal) - Images



Anti-TFF2 antibody ALS11171 IHC of human small intestine.

TFF2 / SP Antibody (Internal) - Background

Inhibits gastrointestinal motility and gastric acid secretion. Could function as a structural component of gastric mucus, possibly by stabilizing glycoproteins in the mucus gel through interactions with carbohydrate side chains (By similarity).

TFF2 / SP Antibody (Internal) - References

Tomasetto C., et al. EMBO J. 9:407-414(1990).
Seib T., et al. Genomics 40:200-202(1997).
Berry A., et al. Genomics 68:22-29(2000).