

**GFPT1 / GFAT Antibody (C-Terminus)**  
**Rabbit Polyclonal Antibody**  
**Catalog # ALS11202****Specification**

---

**GFPT1 / GFAT Antibody (C-Terminus) - Product Information**

Application	IHC-P
Primary Accession	<a href="#">Q06210</a>
Reactivity	Human, Mouse, Monkey, Pig, Horse, Bovine, Guinea Pig
Host	Rabbit
Clonality	Polyclonal
Calculated MW	79kDa KDa
Dilution	IHC-P~~N/A

**GFPT1 / GFAT Antibody (C-Terminus) - Additional Information****Gene ID** 2673**Other Names**

Glutamine--fructose-6-phosphate aminotransferase [isomerizing] 1, 2.6.1.16,  
D-fructose-6-phosphate amidotransferase 1, Glutamine:fructose-6-phosphate amidotransferase 1,  
GFAT 1, GFAT1, Hexosephosphate aminotransferase 1, GFPT1, GFAT, GFPT

**Target/Specificity**

Human GFPT1. BLAST analysis of the peptide immunogen showed no homology with other human proteins.

**Reconstitution & Storage**

Long term: -70°C; Short term: +4°C

**Precautions**

GFPT1 / GFAT Antibody (C-Terminus) is for research use only and not for use in diagnostic or therapeutic procedures.

**GFPT1 / GFAT Antibody (C-Terminus) - Protein Information****Name** GFPT1**Synonyms** GFAT, GFPT**Function**

Controls the flux of glucose into the hexosamine pathway. Most likely involved in regulating the availability of precursors for N- and O-linked glycosylation of proteins. Regulates the circadian expression of clock genes BMAL1 and CRY1 (By similarity). Has a role in fine tuning the metabolic fluctuations of cytosolic UDP-GlcNAc and its effects on hyaluronan synthesis that occur during tissue remodeling (PubMed:<a href="http://www.uniprot.org/citations/26887390" target="\_blank">26887390</a>).

**Tissue Location**

Isoform 1 is predominantly expressed in skeletal muscle. Not expressed in brain. Seems to be selectively expressed in striated muscle.

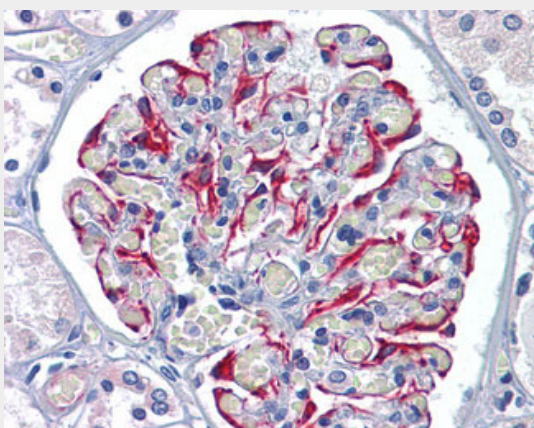
**Volume**

50 µl

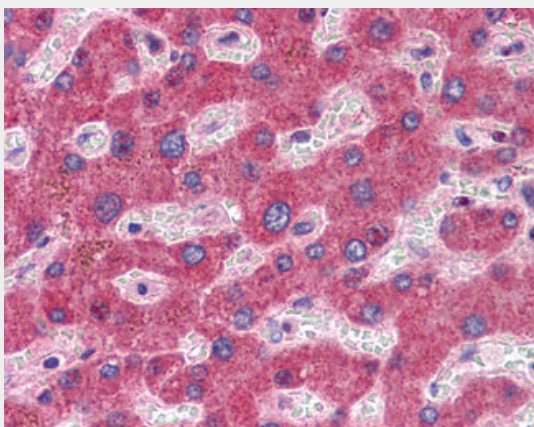
**GFPT1 / GFAT Antibody (C-Terminus) - Protocols**

Provided below are standard protocols that you may find useful for product applications.

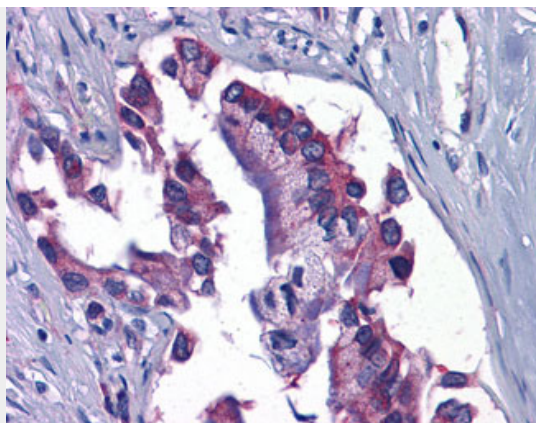
- [Western Blot](#)
- [Blocking Peptides](#)
- [Dot Blot](#)
- [Immunohistochemistry](#)
- [Immunofluorescence](#)
- [Immunoprecipitation](#)
- [Flow Cytometry](#)
- [Cell Culture](#)

**GFPT1 / GFAT Antibody (C-Terminus) - Images**

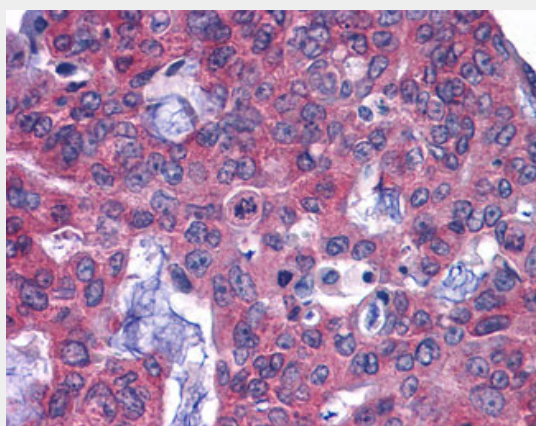
Anti-GFPT1 antibody ALS11202 IHC of human kidney.



Anti-GFPT1 antibody ALS11202 IHC of human liver.



Anti-GFPT1 / GFAT antibody IHC of human Pancreas, Carcinoma.



Anti-GFPT1 / GFAT antibody IHC of human Colon, Carcinoma.

#### **GFPT1 / GFAT Antibody (C-Terminus) - Background**

Controls the flux of glucose into the hexosamine pathway. Most likely involved in regulating the availability of precursors for N- and O-linked glycosylation of proteins. Regulates the circadian expression of clock genes ARNTL/BMAL1 and CRY1.

#### **GFPT1 / GFAT Antibody (C-Terminus) - References**

- McKnight G.L.,et al.J. Biol. Chem. 267:25208-25212(1992).  
Hillier L.W.,et al.Nature 434:724-731(2005).  
DeHaven J.E.,et al.Diabetes 50:2419-2424(2001).  
Olsen J.V.,et al.Cell 127:635-648(2006).  
Beausoleil S.A.,et al.Nat. Biotechnol. 24:1285-1292(2006).