

SLC2A4 / GLUT-4 Antibody
Rabbit Polyclonal Antibody
Catalog # ALS11215**Specification**

SLC2A4 / GLUT-4 Antibody - Product Information

Application	IHC
Primary Accession	P14672
Reactivity	Human, Mouse, Rat, Monkey
Host	Rabbit
Clonality	Polyclonal
Calculated MW	55kDa KDa

SLC2A4 / GLUT-4 Antibody - Additional Information**Gene ID** 6517**Other Names**

Solute carrier family 2, facilitated glucose transporter member 4, Glucose transporter type 4, insulin-responsive, GLUT-4, SLC2A4, GLUT4

Target/Specificity

Recognizes glucose transporter 4 (GLUT4). It does not react with HEP G2 type glucose transporter in human erythrocytes, rat brain or other tissues that do not exhibit sensitivity to insulin.

Reconstitution & Storage

+4°C or -20°C, Avoid repeated freezing and thawing.

Precautions

SLC2A4 / GLUT-4 Antibody is for research use only and not for use in diagnostic or therapeutic procedures.

SLC2A4 / GLUT-4 Antibody - Protein Information**Name** SLC2A4 ([HGNC:11009](#))**Function**

Insulin-regulated facilitative glucose transporter, which plays a key role in removal of glucose from circulation. Response to insulin is regulated by its intracellular localization: in the absence of insulin, it is efficiently retained intracellularly within storage compartments in muscle and fat cells. Upon insulin stimulation, translocates from these compartments to the cell surface where it transports glucose from the extracellular milieu into the cell.

Cellular Location

Cell membrane {ECO:0000250|UniProtKB:P14142}; Multi-pass membrane protein {ECO:0000250|UniProtKB:P14142} Endomembrane system; Multi-pass membrane protein. Cytoplasm, perinuclear region {ECO:0000250|UniProtKB:P14142}. Note=Localizes primarily to the perinuclear region, undergoing continued recycling to the plasma membrane where it is rapidly

reinternalized (PubMed:8300557). The dileucine internalization motif is critical for intracellular sequestration (PubMed:8300557). Insulin stimulation induces translocation to the cell membrane (By similarity) {ECO:0000250|UniProtKB:P14142, ECO:0000269|PubMed:8300557}

Tissue Location

Skeletal and cardiac muscles; brown and white fat.

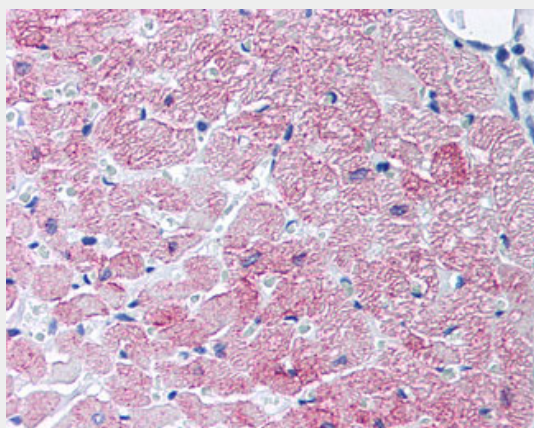
Volume

50 µl

SLC2A4 / GLUT-4 Antibody - Protocols

Provided below are standard protocols that you may find useful for product applications.

- [Western Blot](#)
- [Blocking Peptides](#)
- [Dot Blot](#)
- [Immunohistochemistry](#)
- [Immunofluorescence](#)
- [Immunoprecipitation](#)
- [Flow Cytometry](#)
- [Cell Culture](#)

SLC2A4 / GLUT-4 Antibody - Images

Anti-SLC2A4 / GLUT4 antibody IHC of human heart, cardiac myocytes.

SLC2A4 / GLUT-4 Antibody - Background

Insulin-regulated facilitative glucose transporter.

SLC2A4 / GLUT-4 Antibody - References

Fukumoto H., et al. J. Biol. Chem. 264:7776-7779(1989).
Buse J.B., et al. Diabetes 41:1436-1445(1992).
Zody M.C., et al. Nature 440:1045-1049(2006).
Chiaromonte R., et al. Gene 130:307-308(1993).
Verhey K.J., et al. J. Biol. Chem. 269:2353-2356(1994).