

HP / Haptoglobin Antibody
Rabbit Polyclonal Antibody
Catalog # ALS11217**Specification**

HP / Haptoglobin Antibody - Product Information

Application	IHC
Primary Accession	P00738
Reactivity	Human
Host	Rabbit
Clonality	Polyclonal
Calculated MW	45kDa KDa

HP / Haptoglobin Antibody - Additional Information**Gene ID** 3240**Other Names**

Haptoglobin, Zonulin, Haptoglobin alpha chain, Haptoglobin beta chain, HP

Target/Specificity

Human Haptoglobin.

Reconstitution & Storage

Store vial at -20 C prior to opening. This product is stable for several weeks at 4 C as an undiluted liquid. Dilute only prior to immediate use. For extended storage aliquot contents and freeze at -20 C or below. Avoid cycles of freezing and thawing.

Precautions

HP / Haptoglobin Antibody is for research use only and not for use in diagnostic or therapeutic procedures.

HP / Haptoglobin Antibody - Protein Information**Name** HP**Function**

As a result of hemolysis, hemoglobin is found to accumulate in the kidney and is secreted in the urine. Haptoglobin captures, and combines with free plasma hemoglobin to allow hepatic recycling of heme iron and to prevent kidney damage. Haptoglobin also acts as an antioxidant, has antibacterial activity, and plays a role in modulating many aspects of the acute phase response. Hemoglobin/haptoglobin complexes are rapidly cleared by the macrophage CD163 scavenger receptor expressed on the surface of liver Kupfer cells through an endocytic lysosomal degradation pathway.

Cellular Location

Secreted.

Tissue Location

Expressed by the liver and secreted in plasma.

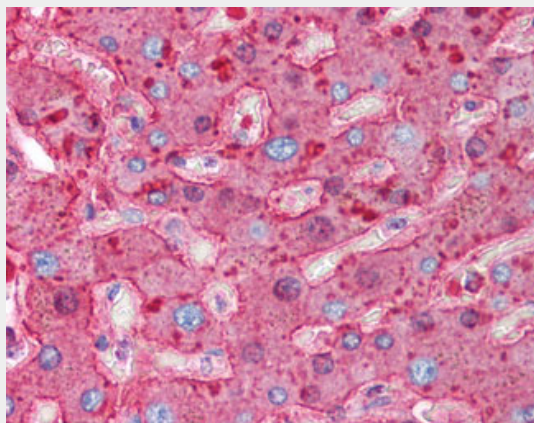
Volume

50 μ l

HP / Haptoglobin Antibody - Protocols

Provided below are standard protocols that you may find useful for product applications.

- [Western Blot](#)
- [Blocking Peptides](#)
- [Dot Blot](#)
- [Immunohistochemistry](#)
- [Immunofluorescence](#)
- [Immunoprecipitation](#)
- [Flow Cytometry](#)
- [Cell Culture](#)

HP / Haptoglobin Antibody - Images

Anti-Haptoglobin antibody IHC of human liver.

HP / Haptoglobin Antibody - Background

As a result of hemolysis, hemoglobin is found to accumulate in the kidney and is secreted in the urine. Haptoglobin captures, and combines with free plasma hemoglobin to allow hepatic recycling of heme iron and to prevent kidney damage. Haptoglobin also acts as an Antimicrobial; Antioxidant, has antibacterial activity and plays a role in modulating many aspects of the acute phase response. Hemoglobin/haptoglobin complexes are rapidly cleared by the macrophage CD163 scavenger receptor expressed on the surface of liver Kupfer cells through an endocytic lysosomal degradation pathway.

HP / Haptoglobin Antibody - References

- van der Straten A., et al. EMBO J. 2:1003-1007(1983).
Yang F., et al. Proc. Natl. Acad. Sci. U.S.A. 80:5875-5879(1983).
van der Straten A., et al. FEBS Lett. 168:103-107(1984).
Brune J.L., et al. Nucleic Acids Res. 12:4531-4538(1984).
Bensi G., et al. EMBO J. 4:119-126(1985).

