

**SFRP1 Antibody (aa43-54)**  
**Rabbit Polyclonal Antibody**  
**Catalog # ALS11230****Specification**

---

**SFRP1 Antibody (aa43-54) - Product Information**

Application	WB, IHC-P, IF, E
Primary Accession	<a href="#">Q8N474</a>
Reactivity	Human, Mouse
Host	Rabbit
Clonality	Polyclonal
Calculated MW	35kDa KDa
Dilution	WB~~1:1000 IHC-P~~N/A IF~~1:50~200 E~~N/A

**SFRP1 Antibody (aa43-54) - Additional Information****Gene ID** 6422**Other Names**

Secreted frizzled-related protein 1, FRP-1, sFRP-1, Secreted apoptosis-related protein 2, SARP-2, SFRP1, FRP, FRP1, SARP2

**Reconstitution & Storage**

Long term: -20°C; Short term: +4°C. Avoid repeat freeze-thaw cycles.

**Precautions**

SFRP1 Antibody (aa43-54) is for research use only and not for use in diagnostic or therapeutic procedures.

**SFRP1 Antibody (aa43-54) - Protein Information****Name** SFRP1**Synonyms** FRP, FRP1, SARP2**Function**

Soluble frizzled-related proteins (sFRPS) function as modulators of Wnt signaling through direct interaction with Wnts. They have a role in regulating cell growth and differentiation in specific cell types. SFRP1 decreases intracellular beta-catenin levels (By similarity). Has antiproliferative effects on vascular cells, in vitro and in vivo, and can induce, in vivo, an angiogenic response. In vascular cell cycle, delays the G1 phase and entry into the S phase (By similarity). In kidney development, inhibits tubule formation and bud growth in metanephroi (By similarity). Inhibits WNT1/WNT4-mediated TCF- dependent transcription.

**Cellular Location**

Secreted. Note=Cell membrane or extracellular matrix-associated. Released by heparin-binding

**Tissue Location**

Widely expressed. Absent from lung, liver and peripheral blood leukocytes. Highest levels in heart and fetal kidney Also expressed in testis, ovary, fetal brain and lung, leiomyomal cells, myometrial cells and vascular smooth muscle cells. Expressed in foreskin fibroblasts and in keratinocytes

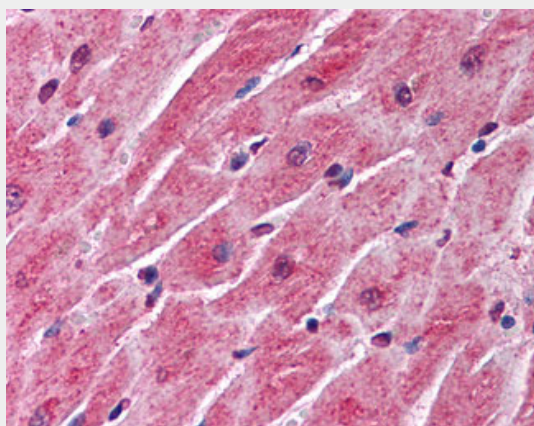
**Volume**

50  $\mu$ l

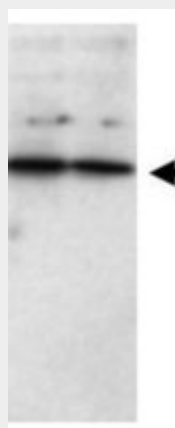
**SFRP1 Antibody (aa43-54) - Protocols**

Provided below are standard protocols that you may find useful for product applications.

- [Western Blot](#)
- [Blocking Peptides](#)
- [Dot Blot](#)
- [Immunohistochemistry](#)
- [Immunofluorescence](#)
- [Immunoprecipitation](#)
- [Flow Cytometry](#)
- [Cell Culture](#)

**SFRP1 Antibody (aa43-54) - Images**

Anti-SFRP1 antibody IHC of human heart.



Western Blot - SFRP1 Antibody.

### **SFRP1 Antibody (aa43-54) - Background**

Soluble frizzled-related proteins (sFRPS) function as modulators of Wnt signaling through direct interaction with Wnts. They have a role in regulating cell growth and differentiation in specific cell types. SFRP1 decreases intracellular beta-catenin levels (By similarity). Has antiproliferative effects on vascular cells, in vitro and in vivo, and can induce, in vivo, an angiogenic response. In vascular cell cycle, delays the G1 phase and entry into the S phase (By similarity). In kidney development, inhibits tubule formation and bud growth in metanephroi (By similarity). Inhibits WNT1/WNT4-mediated TCF-dependent transcription.

### **SFRP1 Antibody (aa43-54) - References**

Finch P.W.,et al.Proc. Natl. Acad. Sci. U.S.A. 94:6770-6775(1997).  
Melkonyan H.S.,et al.Proc. Natl. Acad. Sci. U.S.A. 94:13636-13641(1997).  
Zhou Z.,et al.Int. J. Cancer 78:95-99(1998).  
Chong J.M.,et al.J. Biol. Chem. 277:5134-5144(2002).  
Bafico A.,et al.J. Biol. Chem. 274:16180-16187(1999).