

CCNL1 / Cyclin L1 Antibody
Rabbit Polyclonal Antibody
Catalog # ALS11242**Specification**

CCNL1 / Cyclin L1 Antibody - Product Information

Application	IHC
Primary Accession	O9UK58
Reactivity	Human, Mouse, Rat
Host	Rabbit
Clonality	Polyclonal
Calculated MW	60kDa KDa

CCNL1 / Cyclin L1 Antibody - Additional Information**Gene ID** 57018**Other Names**

Cyclin-L1, Cyclin-L, CCNL1

Target/Specificity

Synthetic construct consisting of full length Human Cyclin L1b protein.

Reconstitution & Storage

+4°C or -20°C, Avoid repeated freezing and thawing.

Precautions

CCNL1 / Cyclin L1 Antibody is for research use only and not for use in diagnostic or therapeutic procedures.

CCNL1 / Cyclin L1 Antibody - Protein Information**Name** CCNL1**Function**

Involved in pre-mRNA splicing. Functions in association with cyclin-dependent kinases (CDKs) (PubMed:18216018). Inhibited by the CDK-specific inhibitor CDKN1A/p21 (PubMed:11980906). May play a role in the regulation of RNA polymerase II (pol II). May be a candidate proto- oncogene in head and neck squamous cell carcinomas (HNSCC) (PubMed:12414649, PubMed:15700036).

Cellular Location

Nucleus speckle. Nucleus, nucleoplasm. Note=Found in nuclear intrachromatin granules clusters (IGC), also called nuclear speckles, which are storage compartments for nuclear proteins involved in mRNA processing.

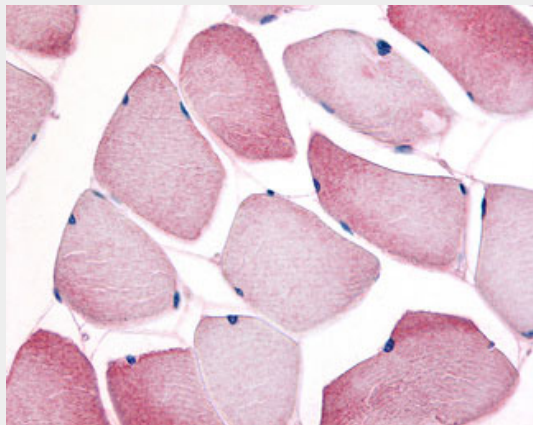
Tissue Location

Widely expressed. Overexpression in primary tumors of head and neck squamous cell carcinomas (HNSCC)

CCNL1 / Cyclin L1 Antibody - Protocols

Provided below are standard protocols that you may find useful for product applications.

- [Western Blot](#)
- [Blocking Peptides](#)
- [Dot Blot](#)
- [Immunohistochemistry](#)
- [Immunofluorescence](#)
- [Immunoprecipitation](#)
- [Flow Cytometry](#)
- [Cell Culture](#)

CCNL1 / Cyclin L1 Antibody - Images

Anti-CCNL1 / Cyclin L1 antibody IHC of human skeletal muscle.

CCNL1 / Cyclin L1 Antibody - Background

Transcriptional regulator which participates in regulating the pre-mRNA splicing process. Seems to be involved in the regulation of RNA polymerase II (pol II). Functions in association with cyclin-dependent kinases (CDKs) and has a role in the second step of splicing. May be a candidate proto-oncogene in head and neck squamous cell carcinomas (HNSCC). Inhibited by the CDK-specific inhibitor p21.

CCNL1 / Cyclin L1 Antibody - References

Dickinson L.A., et al. J. Biol. Chem. 277:25465-25473(2002).
Ota T., et al. Nat. Genet. 36:40-45(2004).
Mural R.J., et al. Submitted (SEP-2005) to the EMBL/GenBank/DBJ databases.
Zhang Q.-H., et al. Genome Res. 10:1546-1560(2000).
Clark H.F., et al. Genome Res. 13:2265-2270(2003).