

RGS2 Antibody (aa1-50)
Rabbit Polyclonal Antibody
Catalog # ALS11256**Specification**

RGS2 Antibody (aa1-50) - Product Information

Application	IHC
Primary Accession	P41220
Reactivity	Human, Mouse, Rat
Host	Rabbit
Clonality	Polyclonal
Calculated MW	24kDa KDa

RGS2 Antibody (aa1-50) - Additional Information**Gene ID** 5997**Other Names**

Regulator of G-protein signaling 2, RGS2, Cell growth-inhibiting gene 31 protein, G0/G1 switch regulatory protein 8, RGS2, G0S8

Target/Specificity

A synthetic peptide within amino acid residues 1-50 of human RGS2 was used as immunogen.

Reconstitution & Storage

Long term: -70°C; Short term: +4°C

Precautions

RGS2 Antibody (aa1-50) is for research use only and not for use in diagnostic or therapeutic procedures.

RGS2 Antibody (aa1-50) - Protein Information**Name** RGS2**Synonyms** G0S8**Function**

Regulates G protein-coupled receptor signaling cascades. Inhibits signal transduction by increasing the GTPase activity of G protein alpha subunits, thereby driving them into their inactive GDP-bound form (PubMed: [11063746](http://www.uniprot.org/citations/11063746), PubMed: [19478087](http://www.uniprot.org/citations/19478087)). It is involved in the negative regulation of the angiotensin-activated signaling pathway (PubMed: [28784619](http://www.uniprot.org/citations/28784619)). Plays a role in the regulation of blood pressure in response to signaling via G protein-coupled receptors and GNAQ. Plays a role in regulating the constriction and relaxation of vascular smooth muscle (By similarity). Binds EIF2B5 and blocks its activity, thereby inhibiting the translation of mRNA into

protein (PubMed:19736320).

Cellular Location

[Isoform 1]: Cell membrane. Cytoplasm. Nucleus, nucleolus [Isoform 3]: Cell membrane. Cytoplasm Nucleus, nucleolus

Tissue Location

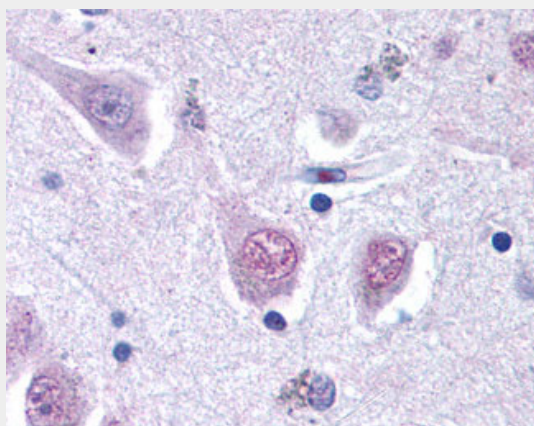
Expressed in acute myelogenous leukemia (AML) and in acute lymphoblastic leukemia (ALL).

RGS2 Antibody (aa1-50) - Protocols

Provided below are standard protocols that you may find useful for product applications.

- [Western Blot](#)
- [Blocking Peptides](#)
- [Dot Blot](#)
- [Immunohistochemistry](#)
- [Immunofluorescence](#)
- [Immunoprecipitation](#)
- [Flow Cytometry](#)
- [Cell Culture](#)

RGS2 Antibody (aa1-50) - Images



Anti-RGS2 antibody IHC of human brain, cortex.

RGS2 Antibody (aa1-50) - Background

Inhibits signal transduction by increasing the GTPase activity of G protein alpha subunits thereby driving them into their inactive GDP-bound form. May play a role in leukemogenesis. Plays a role in negative feedback control pathway for adenylyl cyclase signaling. Binds EIF2B5 and blocks its activity, thereby inhibiting the translation of mRNA into protein.

RGS2 Antibody (aa1-50) - References

Siderovski D.P.,et al.DNA Cell Biol. 13:125-147(1994).
Heximer S.P.,et al.J. Biol. Chem. 276:14195-14203(2001).
Gu S.,et al.Mol. Pharmacol. 73:1-11(2008).
Puhl H.L. III,et al.Submitted (MAR-2002) to the EMBL/GenBank/DDBJ databases.
Kim J.W.,et al.Submitted (MAR-2005) to the EMBL/GenBank/DDBJ databases.

