

**DKK1 Antibody (C-Terminus)**  
**Goat Polyclonal Antibody**  
**Catalog # ALS11283****Specification**

---

**DKK1 Antibody (C-Terminus) - Product Information**

Application	WB, IHC-P, E
Primary Accession	<a href="#">O94907</a>
Reactivity	Human, Mouse, Monkey, Pig, Goat, Horse, Bovine, Dog
Host	Goat
Clonality	Polyclonal
Calculated MW	29kDa KDa
Dilution	WB~~1:1000 IHC-P~~N/A E~~N/A

**DKK1 Antibody (C-Terminus) - Additional Information****Gene ID** 22943**Other Names**

Dickkopf-related protein 1, Dickkopf-1, Dkk-1, hDkk-1, SK, DKK1

**Target/Specificity**

Human DKK1.

**Reconstitution & Storage**

Store at -20°C. Minimize freezing and thawing.

**Precautions**

DKK1 Antibody (C-Terminus) is for research use only and not for use in diagnostic or therapeutic procedures.

**DKK1 Antibody (C-Terminus) - Protein Information****Name** DKK1**Function**

Antagonizes canonical Wnt signaling by inhibiting LRP5/6 interaction with Wnt and by forming a ternary complex with the transmembrane protein KREMEN that promotes internalization of LRP5/6 (PubMed:<a href="http://www.uniprot.org/citations/22000856" target="\_blank">22000856</a>). DKKs play an important role in vertebrate development, where they locally inhibit Wnt regulated processes such as antero-posterior axial patterning, limb development, somitogenesis and eye formation. In the adult, Dkks are implicated in bone formation and bone disease, cancer and Alzheimer disease (PubMed:<a href="http://www.uniprot.org/citations/17143291" target="\_blank">17143291</a>). Inhibits the pro-apoptotic function of KREMEN1 in a Wnt-independent manner, and has anti-apoptotic activity (By similarity).

**Cellular Location**  
Secreted.

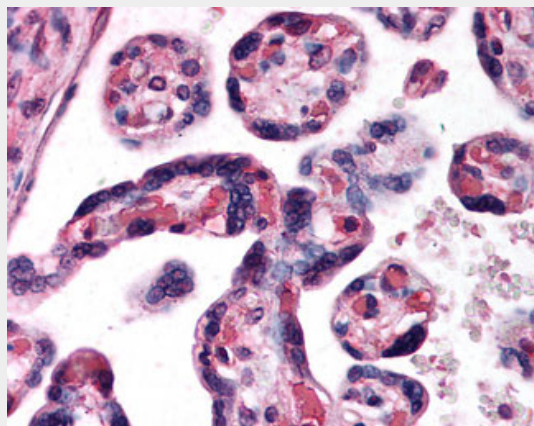
**Tissue Location**  
Placenta.

### **DKK1 Antibody (C-Terminus) - Protocols**

Provided below are standard protocols that you may find useful for product applications.

- [Western Blot](#)
- [Blocking Peptides](#)
- [Dot Blot](#)
- [Immunohistochemistry](#)
- [Immunofluorescence](#)
- [Immunoprecipitation](#)
- [Flow Cytometry](#)
- [Cell Culture](#)

### **DKK1 Antibody (C-Terminus) - Images**



Anti-DKK1 antibody IHC of human placenta.

### **DKK1 Antibody (C-Terminus) - Background**

Antagonizes canonical Wnt signaling by inhibiting LRP5/6 interaction with Wnt and by forming a ternary complex with the transmembrane protein KREMEN that promotes internalization of LRP5/6. DKKs play an important role in vertebrate development, where they locally inhibit Wnt regulated processes such as antero- posterior axial patterning, limb development, somitogenesis and eye formation. In the adult, Dkks are implicated in bone formation and bone disease, cancer and Alzheimer disease.

### **DKK1 Antibody (C-Terminus) - References**

Fedi P.,et al.J. Biol. Chem. 274:19465-19472(1999).  
Krupnik V.E.,et al.Gene 238:301-313(1999).  
Tate G.,et al.Submitted (NOV-1998) to the EMBL/GenBank/DDBJ databases.  
Roessler E.,et al.Cytogenet. Cell Genet. 89:220-224(2000).  
Clark H.F.,et al.Genome Res. 13:2265-2270(2003).