

TRAF6 Antibody (C-Terminus)
Rabbit Polyclonal Antibody
Catalog # ALS11290**Specification****TRAF6 Antibody (C-Terminus) - Product Information**

Application	ICC, IF, IHC
Primary Accession	Q9Y4K3
Reactivity	Human, Mouse, Rat
Host	Rabbit
Clonality	Polyclonal
Calculated MW	60kDa KDa

TRAF6 Antibody (C-Terminus) - Additional Information**Gene ID** 7189**Other Names**

TNF receptor-associated factor 6, 6.3.2.-, E3 ubiquitin-protein ligase TRAF6, Interleukin-1 signal transducer, RING finger protein 85, TRAF6, RNF85

Target/Specificity

peptide corresponding to 14 amino acids near the C-terminus of human TRAF6

Reconstitution & Storage

Short term 4°C, long term aliquot and store at -20°C, avoid freeze thaw cycles. Store undiluted.

Precautions

TRAF6 Antibody (C-Terminus) is for research use only and not for use in diagnostic or therapeutic procedures.

TRAF6 Antibody (C-Terminus) - Protein Information**Name** TRAF6**Synonyms** RNF85**Function**

E3 ubiquitin ligase that, together with UBE2N and UBE2V1, mediates the synthesis of 'Lys-63'-linked-polyubiquitin chains conjugated to proteins, such as ECSIT, IKBKG, IRAK1, AKT1 and AKT2 (PubMed:11057907, PubMed:18347055, PubMed:19465916, PubMed:19713527, PubMed:27746020, PubMed:31620128). Also mediates ubiquitination of free/unanchored polyubiquitin chain that leads to MAP3K7 activation (PubMed:<a

<http://www.uniprot.org/citations/19675569> target="_blank">19675569). Leads to the activation of NF-kappa-B and JUN (PubMed:16378096, PubMed:17135271, PubMed:17703191). Seems to also play a role in dendritic cells (DCs) maturation and/or activation (By similarity). Represses c-Myb-mediated transactivation, in B-lymphocytes (PubMed:18093978, PubMed:18758450). Adapter protein that seems to play a role in signal transduction initiated via TNF receptor, IL-1 receptor and IL-17 receptor (PubMed:12140561, PubMed:19825828, PubMed:8837778). Regulates osteoclast differentiation by mediating the activation of adapter protein complex 1 (AP-1) and NF-kappa-B, in response to RANK-L stimulation (By similarity). Together with MAP3K8, mediates CD40 signals that activate ERK in B-cells and macrophages, and thus may play a role in the regulation of immunoglobulin production (By similarity). Acts as a regulator of the JNK and NF-kappa-B signaling pathways by initiating assembly of heterotypic 'Lys-63'-'Lys-48'-linked branched ubiquitin chains that are then recognized by TAB2: TRAF6 catalyzes initial 'Lys-63'-linked-polyubiquitin chains that are then branched via 'Lys-48'-linked polyubiquitin by HUWE1 (PubMed:27746020). 'Lys-63'-'Lys-48'-linked branched ubiquitin chains protect 'Lys-63'- linkages from CYLD deubiquitination (PubMed:27746020). Participates also in the TCR signaling by ubiquitinating LAT (PubMed:23514740, PubMed:25907557).

Cellular Location

Cytoplasm. Cytoplasm, cell cortex. Nucleus. Lipid droplet {ECO:0000250|UniProtKB:P70196}. Note=Found in the nuclei of some aggressive B-cell lymphoma cell lines as well as in the nuclei of both resting and activated T- and B-lymphocytes. Found in punctate nuclear body protein complexes. Ubiquitination may occur in the cytoplasm and sumoylation in the nucleus. RSAD2/viperin recruits it to the lipid droplet (By similarity).

Tissue Location

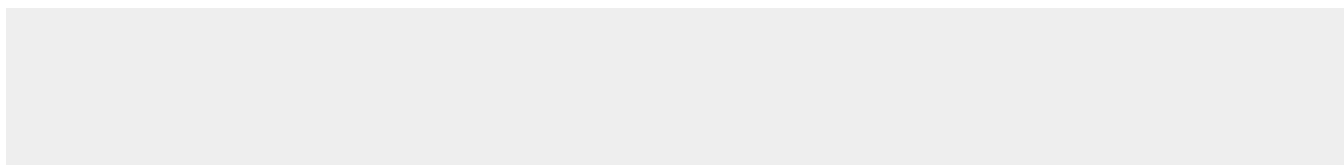
Expressed in heart, brain, placenta, lung, liver, skeletal muscle, kidney and pancreas

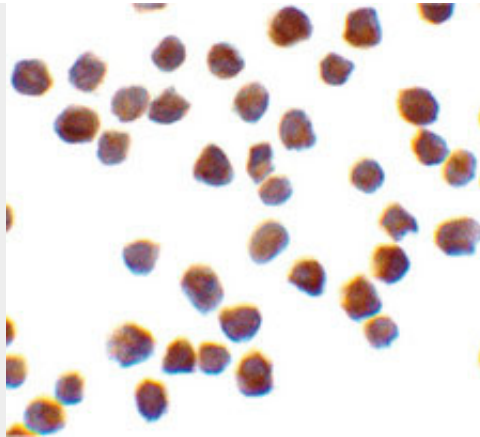
TRAF6 Antibody (C-Terminus) - Protocols

Provided below are standard protocols that you may find useful for product applications.

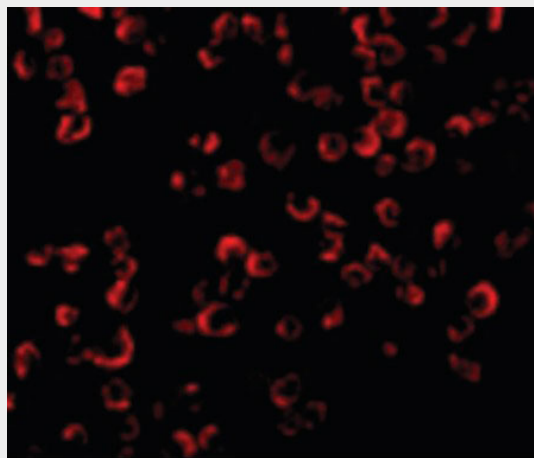
- [Western Blot](#)
- [Blocking Peptides](#)
- [Dot Blot](#)
- [Immunohistochemistry](#)
- [Immunofluorescence](#)
- [Immunoprecipitation](#)
- [Flow Cytometry](#)
- [Cell Culture](#)

TRAF6 Antibody (C-Terminus) - Images

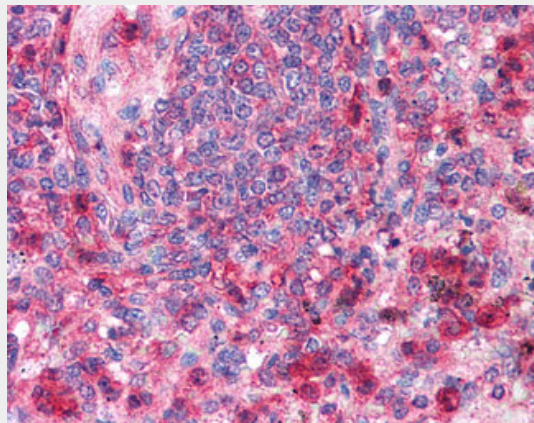




Immunocytochemistry of TRAF6 in K562 cells with TRAF6 antibody at 0.5 ug/ml.



Immunofluorescence of TRAF6 in K562 cells with TRAF6 antibody at 20 ug/ml.



Anti-TRAF6 antibody IHC of human spleen.

TRAF6 Antibody (C-Terminus) - Background

E3 ubiquitin ligase that, together with UBE2N and UBE2V1, mediates the synthesis of 'Lys-63'-linked-polyubiquitin chains conjugated to proteins, such as IKBKG, IRAK1, AKT1 and AKT2. Also mediates ubiquitination of free/unanchored polyubiquitin chain that leads to MAP3K7 activation. Leads to the activation of NF-kappa-B and JUN. May be essential for the formation of functional osteoclasts. Seems to also play a role in dendritic cells (DCs) maturation and/or activation. Represses c- Myb-mediated transactivation, in B-lymphocytes. Adapter protein that seems to play a role in signal transduction initiated via TNF receptor, IL-1 receptor and IL-17

receptor. Regulates osteoclast differentiation by mediating the activation of adapter protein complex 1 (AP-1) and NF-kappa-B, in response to RANK-L stimulation. Together with MAP3K8, mediates CD40 signals that activate ERK in B-cells and macrophages, and thus may play a role in the regulation of immunoglobulin production.

TRAF6 Antibody (C-Terminus) - References

Cao Z.,et al.Nature 383:443-446(1996).

Ota T.,et al.Nat. Genet. 36:40-45(2004).

Taylor T.D.,et al.Nature 440:497-500(2006).

Mural R.J.,et al.Submitted (SEP-2005) to the EMBL/GenBank/DDBJ databases.

Malinin N.L.,et al.Nature 385:540-544(1997).