

**CBLC Antibody (aa444-458)
Rabbit Polyclonal Antibody
Catalog # ALS11291****Specification**

CBLC Antibody (aa444-458) - Product Information

Application	WB, IHC-P, IF, E, IP
Primary Accession	O9ULV8
Reactivity	Human
Host	Rabbit
Clonality	Polyclonal
Calculated MW	52kDa KDa
Dilution	WB~~1:1000 IHC-P~~N/A IF~~1:50~200 E~~N/A IP~~N/A

CBLC Antibody (aa444-458) - Additional Information

Gene ID 23624

Other Names

E3 ubiquitin-protein ligase CBL-C, 6.3.2.-, RING finger protein 57, SH3-binding protein CBL-3, SH3-binding protein CBL-C, Signal transduction protein CBL-C, CBLC, CBL3, RNF57

Target/Specificity

Amino acids 444-458 of Human Cbl-c.

Reconstitution & Storage

+4°C or -20°C, Avoid repeated freezing and thawing.

Precautions

CBLC Antibody (aa444-458) is for research use only and not for use in diagnostic or therapeutic procedures.

CBLC Antibody (aa444-458) - Protein Information

Name CBLC

Synonyms CBL3, RNF57

Function

Acts as an E3 ubiquitin-protein ligase, which accepts ubiquitin from specific E2 ubiquitin-conjugating enzymes, and then transfers it to substrates promoting their degradation by the proteasome. Functionally coupled with the E2 ubiquitin-protein ligases UB2D1, UB2D2 and UB2D3. Regulator of EGFR mediated signal transduction; upon EGF activation, ubiquitinates EGFR. Isoform 1, but not isoform 2, inhibits EGF stimulated MAPK1 activation. Promotes ubiquitination of

SRC phosphorylated at 'Tyr-419'. In collaboration with CD2AP may act as regulatory checkpoint for Ret signaling by modulating the rate of RET degradation after ligand activation; CD2AP converts it from an inhibitor to a promoter of RET degradation; the function limits the potency of GDNF on neuronal survival.

Tissue Location

Ubiquitous..

Volume

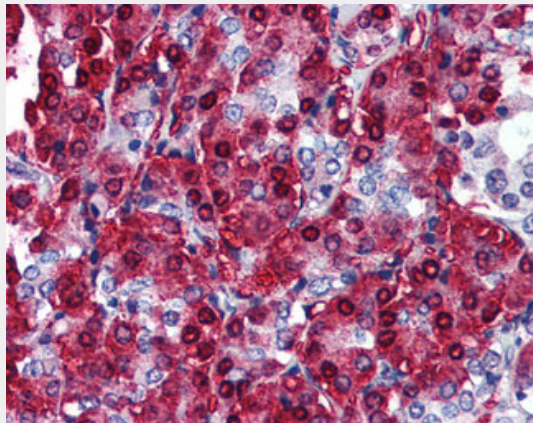
100 µl

CBLC Antibody (aa444-458) - Protocols

Provided below are standard protocols that you may find useful for product applications.

- [Western Blot](#)
- [Blocking Peptides](#)
- [Dot Blot](#)
- [Immunohistochemistry](#)
- [Immunofluorescence](#)
- [Immunoprecipitation](#)
- [Flow Cytometry](#)
- [Cell Culture](#)

CBLC Antibody (aa444-458) - Images



Anti-CBLC antibody IHC of human pancreas.

CBLC Antibody (aa444-458) - Background

Acts as an E3 ubiquitin-protein ligase, which accepts ubiquitin from specific E2 ubiquitin-conjugating enzymes, and then transfers it to substrates promoting their degradation by the proteasome. Functionally coupled with the E2 ubiquitin-protein ligases UB2D1, UB2D2 and UB2D3. Regulator of EGFR mediated signal transduction; upon EGF activation, ubiquitinates EGFR. Isoform 1, but not isoform 2, inhibits EGF stimulated MAPK1 activation. Promotes ubiquitination of SRC phosphorylated at 'Tyr-419'. In collaboration with CD2AP may act as regulatory checkpoint for Ret signaling by modulating the rate of RET degradation after ligand activation; CD2AP converts it from an inhibitor to a promoter of RET degradation; the function limits the potency of GDNF on neuronal survival.

CBLC Antibody (aa444-458) - References

Kim M.,et al.Gene 239:145-154(1999).
Keane M.M.,et al.Oncogene 18:3365-3375(1999).
Kim M.,et al.Oncogene 23:1645-1655(2004).
Tsui C.C.,et al.J. Neurosci. 28:8789-8800(2008).
Ryan P.E.,et al.J. Biol. Chem. 285:23687-23698(2010).