

AP3D1 / Adaptin Delta Antibody (aa686-698)
Goat Polyclonal Antibody
Catalog # ALS11309**Specification**

AP3D1 / Adaptin Delta Antibody (aa686-698) - Product Information

Application	WB
Primary Accession	O14617
Reactivity	Human, Chicken
Host	Goat
Clonality	Polyclonal
Calculated MW	130kDa KDa

AP3D1 / Adaptin Delta Antibody (aa686-698) - Additional Information**Gene ID** 8943**Other Names**

AP-3 complex subunit delta-1, AP-3 complex subunit delta, Adaptor-related protein complex 3 subunit delta-1, Delta-adaptin, AP3D1

Target/Specificity

aa 686-698 of Human AP3D1.

Reconstitution & Storage

+4°C or -20°C, Avoid repeated freezing and thawing.

Precautions

AP3D1 / Adaptin Delta Antibody (aa686-698) is for research use only and not for use in diagnostic or therapeutic procedures.

AP3D1 / Adaptin Delta Antibody (aa686-698) - Protein Information**Name** AP3D1**Function**

Part of the AP-3 complex, an adaptor-related complex which is not clathrin-associated. The complex is associated with the Golgi region as well as more peripheral structures. It facilitates the budding of vesicles from the Golgi membrane and may be directly involved in trafficking to lysosomes. Involved in process of CD8+ T- cell and NK cell degranulation (PubMed:26744459). In concert with the BLOC-1 complex, AP-3 is required to target cargos into vesicles assembled at cell bodies for delivery into neurites and nerve terminals (By similarity).

Cellular Location

Cytoplasm. Golgi apparatus membrane; Peripheral membrane protein; Cytoplasmic side

Tissue Location

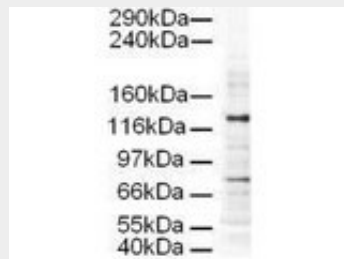
Present in all adult tissues examined with the highest levels in skeletal muscle, heart, pancreas and testis

AP3D1 / Adaptin Delta Antibody (aa686-698) - Protocols

Provided below are standard protocols that you may find useful for product applications.

- [Western Blot](#)
- [Blocking Peptides](#)
- [Dot Blot](#)
- [Immunohistochemistry](#)
- [Immunofluorescence](#)
- [Immunoprecipitation](#)
- [Flow Cytometry](#)
- [Cell Culture](#)

AP3D1 / Adaptin Delta Antibody (aa686-698) - Images



Anti-AP3D1 Antibody - Western Blot.

AP3D1 / Adaptin Delta Antibody (aa686-698) - Background

Part of the AP-3 complex, an adaptor-related complex which is not clathrin-associated. The complex is associated with the Golgi region as well as more peripheral structures. It facilitates the budding of vesicles from the Golgi membrane and may be directly involved in trafficking to lysosomes. In concert with the BLOC-1 complex, AP-3 is required to target cargos into vesicles assembled at cell bodies for delivery into neurites and nerve terminals.

AP3D1 / Adaptin Delta Antibody (aa686-698) - References

Ooi C.E., et al. EMBO J. 16:4508-4518(1997).
Simpson F., et al. J. Cell Biol. 137:835-845(1997).
Totoki Y., et al. Submitted (MAR-2005) to the EMBL/GenBank/DDBJ databases.
Grimwood J., et al. Nature 428:529-535(2004).
Zhang C., et al. Submitted (FEB-1999) to the EMBL/GenBank/DDBJ databases.