

**A2M / Alpha-2-Macroglobulin Antibody**  
**Goat Polyclonal Antibody**  
**Catalog # ALS11345****Specification**

---

**A2M / Alpha-2-Macroglobulin Antibody - Product Information**

Application	IHC
Primary Accession	<a href="#">P01023</a>
Reactivity	Human
Host	Goat
Clonality	Polyclonal
Calculated MW	163kDa KDa

**A2M / Alpha-2-Macroglobulin Antibody - Additional Information****Gene ID 2****Other Names**

Alpha-2-macroglobulin, Alpha-2-M, C3 and PZP-like alpha-2-macroglobulin domain-containing protein 5, A2M, CPAMD5

**Target/Specificity**

A2-Macroglobulin [Human Plasma].

**Reconstitution & Storage**

+4°C or -20°C, Avoid repeated freezing and thawing.

**Precautions**

A2M / Alpha-2-Macroglobulin Antibody is for research use only and not for use in diagnostic or therapeutic procedures.

**A2M / Alpha-2-Macroglobulin Antibody - Protein Information****Name A2M****Synonyms CPAMD5****Function**

Is able to inhibit all four classes of proteinases by a unique 'trapping' mechanism. This protein has a peptide stretch, called the 'bait region' which contains specific cleavage sites for different proteinases. When a proteinase cleaves the bait region, a conformational change is induced in the protein which traps the proteinase. The entrapped enzyme remains active against low molecular weight substrates (activity against high molecular weight substrates is greatly reduced). Following cleavage in the bait region, a thioester bond is hydrolyzed and mediates the covalent binding of the protein to the proteinase.

**Cellular Location**

Secreted.

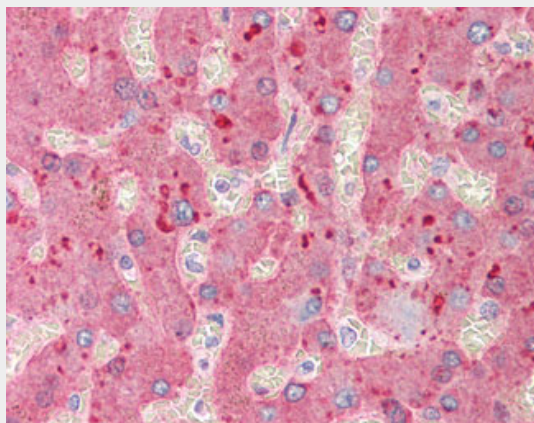
**Tissue Location**

Secreted in plasma..

**A2M / Alpha-2-Macroglobulin Antibody - Protocols**

Provided below are standard protocols that you may find useful for product applications.

- [Western Blot](#)
- [Blocking Peptides](#)
- [Dot Blot](#)
- [Immunohistochemistry](#)
- [Immunofluorescence](#)
- [Immunoprecipitation](#)
- [Flow Cytometry](#)
- [Cell Culture](#)

**A2M / Alpha-2-Macroglobulin Antibody - Images**

Anti-A2M / Alpha-2-Macroglobulin antibody IHC of human liver.

**A2M / Alpha-2-Macroglobulin Antibody - Background**

Is able to inhibit all four classes of proteinases by a unique 'trapping' mechanism. This protein has a peptide stretch, called the 'bait region' which contains specific cleavage sites for different proteinases. When a proteinase cleaves the bait region, a conformational change is induced in the protein which traps the proteinase. The entrapped enzyme remains active against low molecular weight substrates (activity against high molecular weight substrates is greatly reduced). Following cleavage in the bait region a thioester bond is hydrolyzed and mediates the covalent binding of the protein to the proteinase.

**A2M / Alpha-2-Macroglobulin Antibody - References**

Kan C.-C.,et al.Proc. Natl. Acad. Sci. U.S.A. 82:2282-2286(1985).  
Lin V.K.,et al.Prostate 63:299-308(2005).  
Totoki Y.,et al.Submitted (MAR-2005) to the EMBL/GenBank/DBJ databases.  
Bechtel S.,et al.BMC Genomics 8:399-399(2007).  
Scherer S.E.,et al.Nature 440:346-351(2006).