

RBL2 / RB2 p130 Antibody (C-Terminus)
Rabbit Polyclonal Antibody
Catalog # ALS11352**Specification**

RBL2 / RB2 p130 Antibody (C-Terminus) - Product Information

Application	WB, IHC-P, E, IP
Primary Accession	Q08999
Reactivity	Human, Mouse, Rat
Host	Rabbit
Clonality	Polyclonal
Calculated MW	128kDa KDa
Dilution	WB~~1:1000 IHC-P~~N/A E~~N/A IP~~N/A

RBL2 / RB2 p130 Antibody (C-Terminus) - Additional Information**Gene ID** 5934**Other Names**

Retinoblastoma-like protein 2, 130 kDa retinoblastoma-associated protein, p130,
Retinoblastoma-related protein 2, RBR-2, pRb2, RBL2, RB2

Target/Specificity

Rb2 (p130) peptide corresponding to a region near the C-terminus of the human protein conjugated to Keyhole Limpet Hemocyanin (KLH).

Reconstitution & Storage

+4°C or -20°C, Avoid repeated freezing and thawing.

Precautions

RBL2 / RB2 p130 Antibody (C-Terminus) is for research use only and not for use in diagnostic or therapeutic procedures.

RBL2 / RB2 p130 Antibody (C-Terminus) - Protein Information**Name** RBL2**Synonyms** RB2**Function**

Key regulator of entry into cell division. Directly involved in heterochromatin formation by maintaining overall chromatin structure and, in particular, that of constitutive heterochromatin by stabilizing histone methylation. Recruits and targets histone methyltransferases KMT5B and KMT5C, leading to epigenetic transcriptional repression. Controls histone H4 'Lys-20' trimethylation. Probably acts as a transcription repressor by recruiting chromatin-modifying

enzymes to promoters. Potent inhibitor of E2F-mediated trans-activation, associates preferentially with E2F5. Binds to cyclins A and E. Binds to and may be involved in the transforming capacity of the adenovirus E1A protein. May act as a tumor suppressor.

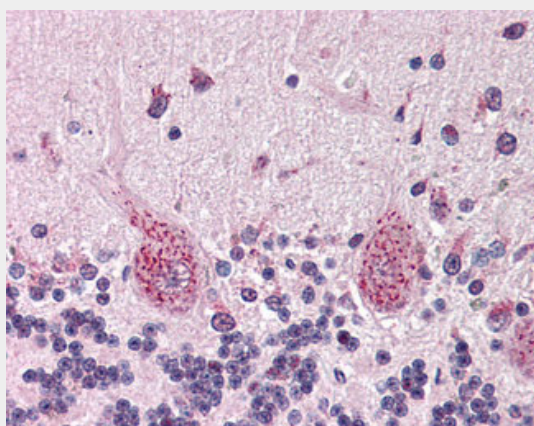
Cellular Location

Nucleus.

RBL2 / RB2 p130 Antibody (C-Terminus) - Protocols

Provided below are standard protocols that you may find useful for product applications.

- [Western Blot](#)
- [Blocking Peptides](#)
- [Dot Blot](#)
- [Immunohistochemistry](#)
- [Immunofluorescence](#)
- [Immunoprecipitation](#)
- [Flow Cytometry](#)
- [Cell Culture](#)

RBL2 / RB2 p130 Antibody (C-Terminus) - Images

Anti-RBL2 antibody IHC of human brain, cerebellum.

RBL2 / RB2 p130 Antibody (C-Terminus) - Background

Key regulator of entry into cell division. Directly involved in heterochromatin formation by maintaining overall chromatin structure and, in particular, that of constitutive heterochromatin by stabilizing histone methylation. Recruits and targets histone methyltransferases SUV420H1 and SUV420H2, leading to epigenetic transcriptional repression. Controls histone H4 'Lys-20' trimethylation. Probably acts as a transcription repressor by recruiting chromatin-modifying enzymes to promoters. Potent inhibitor of E2F-mediated trans-activation, associates preferentially with E2F5. Binds to cyclins A and E. Binds to and may be involved in the transforming capacity of the adenovirus E1A protein. May act as a tumor suppressor.

RBL2 / RB2 p130 Antibody (C-Terminus) - References

Li Y., et al. Genes Dev. 7:2366-2377(1993).
Hannon G.J., et al. Genes Dev. 7:2378-2391(1993).
Ota T., et al. Nat. Genet. 36:40-45(2004).

Martin J.,et al.Nature 432:988-994(2004).
Mayol X.,et al.Oncogene 8:2561-2566(1993).