

SKP1 Antibody (C-Terminus)
Rabbit Polyclonal Antibody
Catalog # ALS11358**Specification**

SKP1 Antibody (C-Terminus) - Product Information

Application	IHC
Primary Accession	P63208
Reactivity	Human
Host	Rabbit
Clonality	Polyclonal
Calculated MW	19kDa KDa

SKP1 Antibody (C-Terminus) - Additional Information**Gene ID** 6500**Other Names**

S-phase kinase-associated protein 1, Cyclin-A/CDK2-associated protein p19, p19A, Organ of Corti protein 2, OCP-2, Organ of Corti protein II, OCP-II, RNA polymerase II elongation factor-like protein, SIII, Transcription elongation factor B polypeptide 1-like, p19skp1, SKP1, EMC19, OCP2, SKP1A, TCEB1L

Target/Specificity

Amino acids 152-163 of Human SKP1 (C-terminus) coupled to KLH.

Reconstitution & Storage

+4°C or -20°C, Avoid repeated freezing and thawing.

Precautions

SKP1 Antibody (C-Terminus) is for research use only and not for use in diagnostic or therapeutic procedures.

SKP1 Antibody (C-Terminus) - Protein Information**Name** SKP1**Synonyms** EMC19, OCP2, SKP1A, TCEB1L**Function**

Essential component of the SCF (SKP1-CUL1-F-box protein) ubiquitin ligase complex, which mediates the ubiquitination of proteins involved in cell cycle progression, signal transduction and transcription. In the SCF complex, serves as an adapter that links the F-box protein to CUL1. The functional specificity of the SCF complex depends on the F-box protein as substrate recognition component. SCF(BTRC) and SCF(FBXW11) direct ubiquitination of CTNNB1 and participate in Wnt signaling. SCF(FBXW11) directs ubiquitination of phosphorylated NFKBIA. SCF(BTRC) directs ubiquitination of NFKBIB, NFKBIE, ATF4, SMAD3, SMAD4, CDC25A, FBXO5, CEP68 and probably NFKB2 (PubMed:<a href="http://www.uniprot.org/citations/25704143"

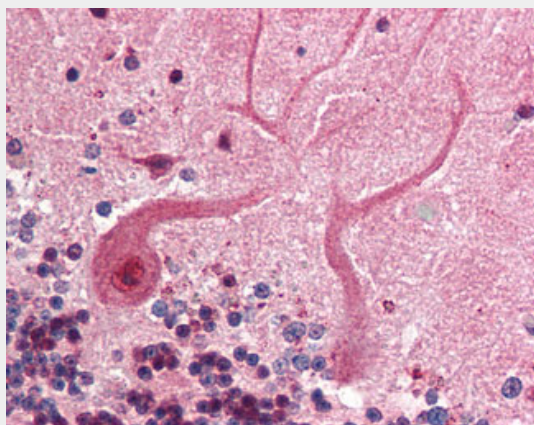
target="_blank">25704143). SCF(SKP2) directs ubiquitination of phosphorylated CDKN1B/p27kip and is involved in regulation of G1/S transition. SCF(SKP2) directs ubiquitination of ORC1, CDT1, RBL2, ELF4, CDKN1A, RAG2, FOXO1A, and probably MYC and TAL1. SCF(FBXW7) directs ubiquitination of cyclin E, NOTCH1 released notch intracellular domain (NICD), and probably PSEN1. SCF(FBXW2) directs ubiquitination of GCM1. SCF(FBXO32) directs ubiquitination of MYOD1. SCF(FBXO7) directs ubiquitination of BIRC2 and DLGAP5. SCF(FBXO33) directs ubiquitination of YBX1. SCF(FBXO11) directs ubiquitination of BCL6 and DTL but does not seem to direct ubiquitination of TP53. SCF(BTRC) mediates the ubiquitination of NFKBIA at 'Lys-21' and 'Lys-22'; the degradation frees the associated NFKB1-RELA dimer to translocate into the nucleus and to activate transcription. SCF(CCNF) directs ubiquitination of CCP110. SCF(FBXL3) and SCF(FBXL21) direct ubiquitination of CRY1 and CRY2. SCF(FBXO9) directs ubiquitination of TTI1 and TLO2. SCF(FBXO10) directs ubiquitination of BCL2.

SKP1 Antibody (C-Terminus) - Protocols

Provided below are standard protocols that you may find useful for product applications.

- [Western Blot](#)
- [Blocking Peptides](#)
- [Dot Blot](#)
- [Immunohistochemistry](#)
- [Immunofluorescence](#)
- [Immunoprecipitation](#)
- [Flow Cytometry](#)
- [Cell Culture](#)

SKP1 Antibody (C-Terminus) - Images



Anti-SKP1 antibody IHC of human brain, cerebellum.

SKP1 Antibody (C-Terminus) - Background

Essential component of the SCF (SKP1-CUL1-F-box protein) ubiquitin ligase complex, which mediates the ubiquitination of proteins involved in cell cycle progression, signal transduction and transcription. In the SCF complex, serves as an adapter that links the F-box protein to CUL1. The functional specificity of the SCF complex depends on the F-box protein as substrate recognition component. SCF(BTRC) and SCF(FBXW11) direct ubiquitination of CTNNB1 and participate in Wnt signaling. SCF(FBXW11) directs ubiquitination of phosphorylated NFKBIA. SCF(BTRC) directs ubiquitination of NFKBIB, NFKBIE, ATF4, SMAD3, SMAD4, CDC25A, FBXO5 and probably NFKB2. SCF(SKP2) directs ubiquitination of phosphorylated CDKN1B/p27kip and is involved in regulation of G1/S transition. SCF(SKP2) directs ubiquitination of ORC1, CDT1, RBL2, ELF4, CDKN1A, RAG2,

FOXO1A, and probably MYC and TAL1. SCF(FBXW7) directs ubiquitination of cyclin E, NOTCH1 released notch intracellular domain (NICD), and probably PSEN1. SCF(FBXW2) directs ubiquitination of GCM1. SCF(FBXO32) directs ubiquitination of MYOD1. SCF(FBXO7) directs ubiquitination of BIRC2 and DLGAP5. SCF(FBXO33) directs ubiquitination of YBX1. SCF(FBXO11) directs ubiquitination of BCL6 and DTL but does not seem to direct ubiquitination of TP53. SCF(BTRC) mediates the ubiquitination of NFKBIA at 'Lys-21' and 'Lys-22'; the degradation frees the associated NFKB1-RELA dimer to translocate into the nucleus and to activate transcription. SCF(CCNF) directs ubiquitination of CCP110. SCF(FBXL3) and SCF(FBXL21) direct ubiquitination of CRY1 and CRY2. SCF(FBXO9) direct ubiquitination of TTI1 and TELO2. SCF(FBXO10) direct ubiquitination of BCL2.

SKP1 Antibody (C-Terminus) - References

Zhang H.,et al.Cell 82:915-925(1995).
Sowden J.,et al.Genomics 29:145-151(1995).
Mural R.J.,et al.Submitted (SEP-2005) to the EMBL/GenBank/DDBJ databases.
Golaz O.,et al.Submitted (FEB-1994) to UniProtKB.
Chiorazzi M.,et al.Proc. Natl. Acad. Sci. U.S.A. 110:3943-3948(2013).