

WRNIP1 / WHIP Antibody (Internal)
Rabbit Polyclonal Antibody
Catalog # ALS11369**Specification**

WRNIP1 / WHIP Antibody (Internal) - Product Information

| | |
|-------------------|---------------------------|
| Application | IHC |
| Primary Accession | Q96S55 |
| Reactivity | Human, Mouse, Rat, Monkey |
| Host | Rabbit |
| Clonality | Polyclonal |
| Calculated MW | 72kDa KDa |

WRNIP1 / WHIP Antibody (Internal) - Additional Information**Gene ID** 56897**Other Names**

ATPase WRNIP1, 3.6.1.3, Werner helicase-interacting protein 1, WRNIP1 (HGNC:20876)

Target/Specificity

An internal region of the WHIP1 protein. The immunogen sequence shows 100% homology to human WHIP1 (isoform 1) and WHIP2 (isoform 2) with predicted molecular weights of 72.2 kD and 69.5 kD, respectively. The immunogen sequence also shows 100% homolog ...

Reconstitution & Storage

+4°C or -20°C, Avoid repeated freezing and thawing.

Precautions

WRNIP1 / WHIP Antibody (Internal) is for research use only and not for use in diagnostic or therapeutic procedures.

WRNIP1 / WHIP Antibody (Internal) - Protein Information**Name** WRNIP1 ([HGNC:20876](#))**Function**

Functions as a modulator of initiation or reinitiation events during DNA polymerase delta-mediated DNA synthesis. In the presence of ATP, stimulation of DNA polymerase delta-mediated DNA synthesis is decreased. Also plays a role in the innate immune defense against viruses. Stabilizes the RIGI dsRNA interaction and promotes RIGI 'Lys- 63'-linked polyubiquitination. In turn, RIGI transmits the signal through mitochondrial MAVS.

Cellular Location

Nucleus. Cytoplasm. Note=Colocalizes with WRN in granular structures in the nucleus.

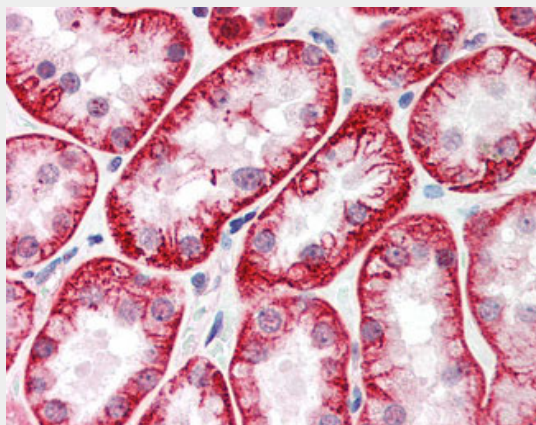
Tissue Location

Ubiquitously expressed.

WRNIP1 / WHIP Antibody (Internal) - Protocols

Provided below are standard protocols that you may find useful for product applications.

- [Western Blot](#)
- [Blocking Peptides](#)
- [Dot Blot](#)
- [Immunohistochemistry](#)
- [Immunofluorescence](#)
- [Immunoprecipitation](#)
- [Flow Cytometry](#)
- [Cell Culture](#)

WRNIP1 / WHIP Antibody (Internal) - Images

Anti-WRNIP1 / WHIP antibody IHC of human kidney.

WRNIP1 / WHIP Antibody (Internal) - Background

Functions as a modulator for initiation or reinitiation events during DNA polymerase delta-mediated DNA synthesis. Has an intrinsic ATPase activity that functions as a sensor of DNA damage or of arrested replication forks and regulates the extent of DNA synthesis.

WRNIP1 / WHIP Antibody (Internal) - References

Kawabe Y., et al. J. Biol. Chem. 276:20364-20369(2001).
Ota T., et al. Nat. Genet. 36:40-45(2004).
Totoki Y., et al. Submitted (APR-2005) to the EMBL/GenBank/DDBJ databases.
Mungall A.J., et al. Nature 425:805-811(2003).
Mural R.J., et al. Submitted (JUL-2005) to the EMBL/GenBank/DDBJ databases.